



FLETCHERTHOMPSON  
ELEVATING DESIGN | SHAPING SOLUTIONS

# Qualifications

## Town of Monroe

Facilities and Demographic Assessment

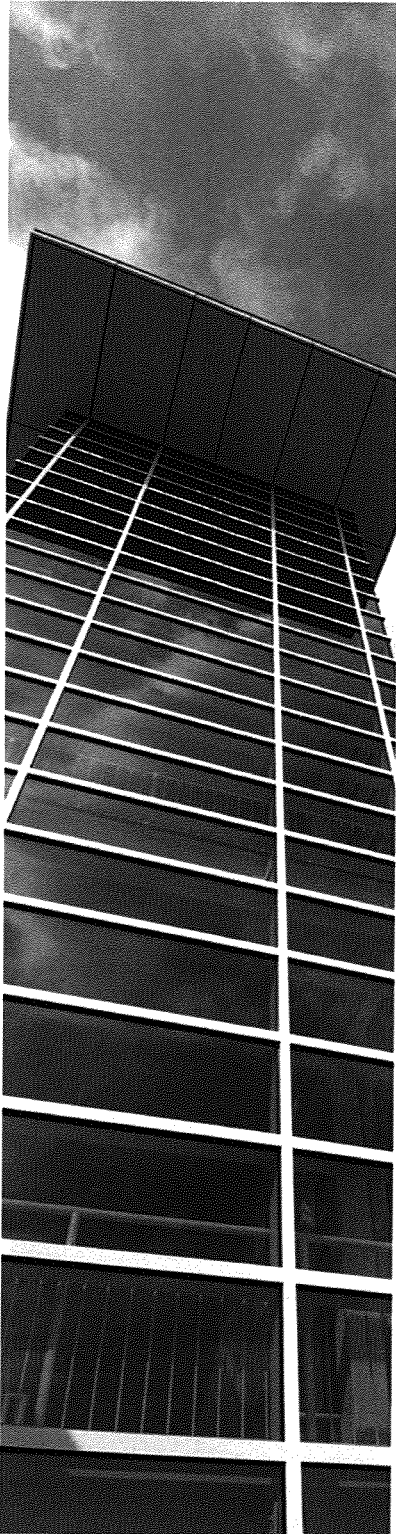
RFQ: #2-2013

March 28, 2013

100<sup>years</sup>plus

ARCHITECTURE | ENGINEERING | INTERIOR DESIGN

## Table of Contents



- A. Letter of Interest
- B. Company Information
- C. Relevant Experience
- D. References
- E. Affidavits
- F. Fee Proposals
- G. Management Plan
- H. Resumes
- I. Data

**Vertical Transportation**

**AB Consulting**



March 28, 2013

Mr. Steve Vavrek  
First Selectman  
Office of the First Selectman  
Town of Monroe  
7 Fan Hill Road  
Monroe, CT 06468

**RE: RFQ #2-2013**  
**Town of Monroe, Facilities and Demographic Assessment**

Dear Mr. Vavrek:

We appreciate the opportunity to present our qualifications and experience for your consideration. We have assembled a team of professionals who possess the knowledge of current and future approaches to facilities assessments and the relevant experience to perform a facilities and demographic assessment for the Town of Monroe and Monroe Public Schools.

Fletcher Thompson offers a strong and consistent presence in the state where we have practiced continuously for 103 years. Our depth of experience in municipal and school projects in Connecticut is unparalleled. With a dedicated staff of 100 architects, engineers, interior designers, and construction support personnel, we have the ability to provide the immediate and long-term resources required for your assessment needs.

**Recent Relevant Experience**

Fletcher Thompson has provided facility assessments and due diligence studies, as well as architectural and engineering services, for many municipal and public school clients, including, but not limited to:

- Bridgeport Public Schools
- City of Bridgeport
- City of Milford
- City of Torrington
- City of Wilton
- Fairfield Public Schools
- Manchester Public Schools
- New Haven Public Schools
- New Milford Public Schools
- Shelton Public Schools
- Southington Public School
- Weston Public Schools

In addition to the firm's wealth of K-12 experience, our staff has worked on many diverse and challenging municipal building types including city halls and town facilities, postal services facilities, fire and police facilities, senior centers, libraries, landmark historic restorations, naval facilities, correctional institutions, and courthouses.

FLETCHER-THOMPSON, INC.  
ARCHITECTURE | ENGINEERING | INTERIOR DESIGN

Three Corporate Drive, Suite 500  
Shelton, Connecticut 06484-6244  
Tel 203.225.6500 Fax 203.225.6800

[www.fletcherthompson.com](http://www.fletcherthompson.com)

CT  
NJ  
NY  
FL  
VA

### **Familiarity with Town of Monroe and Monroe Public Schools**

Fletcher Thompson has provided architectural and engineering services to the Town of Monroe since the early 1960's. We have performed studies and design work for the majority of the educational facilities mentioned in the RFQ as well as the expansion of the Town's recreational facilities.

Currently we are working with the Monroe Public Schools to provide stair improvements to the Natatorium at Masuk High School and a Schools Security Study for the five schools in the District. Both of these projects will be completed shortly.

### **Organizational and Team Structure**

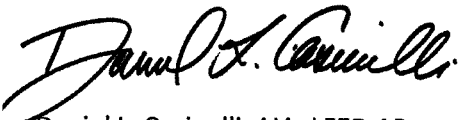
As Principal-in-Charge I will oversee the project. FT's Project Manager and Associate Principal, Vikas Nagardeolekar, AIA, will manage our team with the support of our Director of Design, Daniel Davis, AIA, LEED AP, who will study each facility during the assessment to evaluate the programmatic needs and provide general design direction when it is required. Additional experienced personnel included on our team can be found in Section H, Resumes.

As a local, full-service architecture and engineering firm, we will provide the majority of the professional services in-house. To provide specialty consulting outside our staff, we have carefully selected firms for their quality and expertise of service. For this project, we have supplemented our team with the demographic expertise of the **New England School Development Council (NESDEC)**. Representing approximately 400 cities and towns in New England, NESDEC has extensive experience providing planning services such as demographic reports, long-range plans, educational specifications and strategic planning. Additionally, we propose to utilize the services of **Fuss & O'Neill EnviroScience**, for environmental and site/civil engineering; **AB Consulting** for vertical transportation; **Blades & Goven, LLC**, for landscape architecture; **D'Agostino & Associates** for security, technology and telecommunications; and **Leach Consulting Company, LLC**, for cost estimating, as required.

We fully understand the scope of work and services expected for this assignment and are confident that we will meet or exceed your goals and objectives. We view this assignment as an exciting and challenging opportunity. **We are the right size firm for your assessment...large enough to guarantee a continuity of experienced, competent staffing, yet small enough to assure the continued close personal interest and involvement of our top management and key professional staff. We are ready to start the Town of Monroe's Facilities and Demographic Assessment immediately!**

We look forward to working with you on this challenging project. Please feel free to contact me at 203-225-6504, if you have any questions.

Sincerely,



Daniel L. Casinelli, AIA, LEED AP  
Principal-in-Charge



## B. Company Information



*“Our goal is to translate the vision of our clients into architecture that will meet their needs of today and tomorrow.”*

Daniel L. Casinelli, AIA, LEED AP  
Principal of K-12 Education

### Company Name and Description

#### Fletcher-Thompson, Inc.

Fletcher Thompson (FT) is one of the Northeast’s leading full service planning, design and consulting firms providing comprehensive architectural, engineering, interior design, construction support and building-oriented special services.

The firm’s full-service practice specializes in five market-focused areas: *K-12 Education, Government, College and University, Corporate, and Healthcare*. Each practice group is guided by the leadership of a Principal-in-Charge who has a high degree of project involvement and is responsible for managing teams that are recognized for their innovative and responsive design solutions. Each area is supported by in-house engineering, which includes structural, mechanical, electrical, plumbing and fire protection. The comprehensive list of professional services available, when combined, provide our clients with a single source responsibility for project delivery.

FT offers the following comprehensive professional services:

#### Architecture and Planning

Architectural Design  
Master Planning  
Facility Design Solutions  
Site Analysis / Selection  
Feasibility Studies  
Historic Preservation and Adaptive Re-use  
Construction Administration  
Renderings, Models, Animations

#### Interior Design

Programming  
Space Planning  
Interior Finishes  
Furniture, Fixtures and Equipment  
Inventory, Design, Selection and Procurement  
Signage  
Move Management  
Artwork Selection and Procurement

#### Engineering

Structural Design and Analysis  
Special Inspections  
Seismic Design and Analysis  
Threshold Reviews

#### Mechanical Design

Energy Recovery  
Co-Generation  
Plumbing / Fire Protection  
Process Piping  
Electrical Design  
Lighting  
Information Technology  
Security Systems

#### Consulting

Program Management  
Project Management  
Cost Estimating and Control  
Project Scheduling  
LEED Certification  
Educational Planning and Programming  
Due Diligence Reviews  
Life Cycle Analysis  
Peer Reviews  
Building Systems Commissioning  
Construction Loan Monitoring  
Utility Rebate Assistance  
Energy Audits

*Company information for our team of consultants can be found at the end of this section.*



## B. Company Information

### Principals

The firm is owned and managed by active principals who offer a diverse and complementary range of design experience. They are as follows:

Kurt Baur, AIA, ACHA	Vice President
James Beaudin, AIA	Chairman
Daniel Casinelli, AIA	Vice President and Assistant Secretary
Bill Clegg, FIDA	Vice President
Patrick Curley, AIA	Principal
George Delegas, AIA	Principal
Michael Marcinek	President and Treasurer
Christopher McMahan, AIA	Principal
John Oliveto, PE	Secretary and Assistant Treasurer
Herman Szeker, SE, PE	Vice President
Richard Voelker, AIA	Principal

Daniel Casinelli and Michael Marcinek will be responsible for negotiating and binding this contract with the Town of Monroe.

*Principal profiles have been included in this section.*

### Location

FT is a Connecticut-based firm with offices in Shelton and Hartford, Connecticut, Florida, Massachusetts, New Jersey, New York and Rhode Island. The Shelton office will be responsible for managing this project. The address is as follows:

Three Corporate Drive  
Suite 500  
Shelton, Connecticut 06484

### Principal Contact Person

Daniel L. Casinelli, AIA, LEED AP  
Three Corporate Drive, Suite 500  
Shelton, Connecticut 06484

Direct Dial: 203-225-6504  
Email: dcasinelli@ftae.com

### Legal Form of Ownership

Corporation  
Incorporated in the State of Connecticut.



## B. Company Information



### Years Engaged in Business

103 years

### Litigation

Over the past five years FT has successfully completed projects totaling more than \$2 billion in construction costs. During this time period, the firm has only been involved in the following legal proceedings:

#### **Shelton, Connecticut / Perry Hill School**

FT and its client, the City of Shelton settled a project delay claim for damages by the General Contractor, KBE in mediation and avoided litigation.

#### **Monmouth County Jail**

FT is defending itself against a claim for damages resulting from successor liability due to the firm's 2003 acquisition of Rothe-Johnson-Fantacone, LLC of New Jersey in which FT acquired all assets of the firm. FT is seeking dismissal from the case. The construction and certificate of occupancy was beyond the state statute of limitations for liability.

#### **Montclair State University**

FT and Montclair State University are defending themselves against a project delay claim for damages by the General Contractor. FT and Montclair State University will be teaming together to defend the claim.

#### **Ocean County Jail**

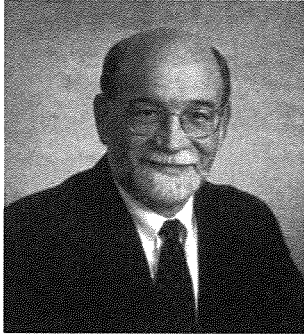
FT has been enjoined as a Third Party Defendant along with The County of Ocean New Jersey, Patock Construction and Travelers Casualty & Surety by New Enterprise Stone & Lime Co over a lawsuit for payment of Retainage on a project designed by FT at Ocean County Jail. The County has withheld payment to cover deficiencies in construction.

### Default

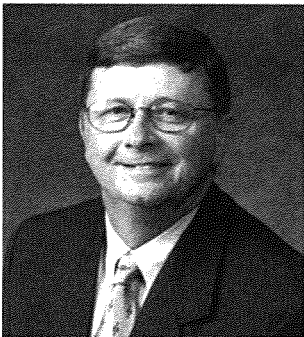
FT has never failed to complete any work awarded to the company and/or defaulted on a contract, or been notified of a default by a client.

## B. Company Information

### Principal Profiles



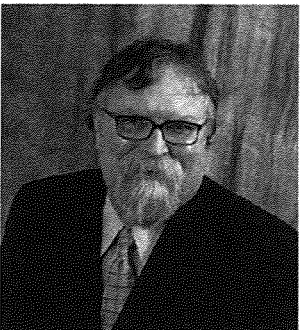
**Kurt Baur, AIA, ACHA**, is a Principal of the firm and serves as the Director of Healthcare Architecture. Kurt is responsible for business development as well as overseeing the planning, design and construction of a wide range of large scale healthcare facilities, including university medical centers, regional hospitals and medical office buildings. He received a bachelor of architecture from Kent State University. Kurt is also a Board Certified Healthcare Architect and a founding member of the American College of Healthcare Architects.



**James A. Beaudin, AIA, LEED AP**, is a Principal of the firm. Jim has over 30 years of experience in K-12 education and college and university projects. Over his career, he has been involved in the design of more than ten million square feet of public and private education construction. Under his leadership, the firm has received numerous awards and recognitions. Jim is responsible for business development as well as managing the Florida office. Jim received his bachelor of architecture degree from Pratt Institute.



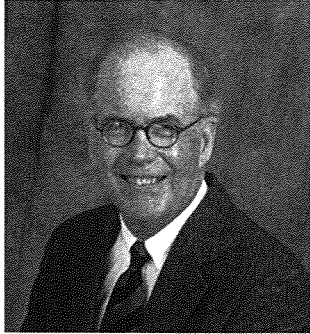
**Daniel L. Casinelli, AIA, LEED AP**, is a Principal of the firm and leads the K-12 Education Practice Group for the New England region. Dan has over 25 years of multi-disciplined architectural and engineering experience specializing in educational facilities. His expertise encompasses master planning, design, construction document development, interior design, contract administration, and project coordination. He is responsible for all phases of project delivery and professional design services as well as business development for the K-12 Practice Group. Dan serves on the AIA Connecticut Board of Directors, the Bridgeport Regional Business Council Board of Directors, as well as the Advisory Board of the ACE mentorship program for the Shelton/Trumbull section. He earned a bachelor of architecture degree from New York Institute of Technology.



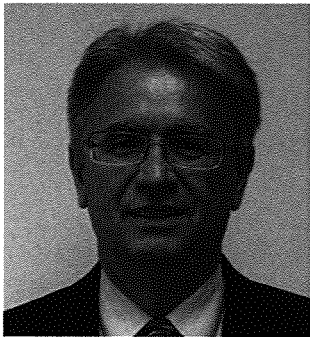
**Bill Clegg, FIIDA, LEED AP**, is Principal of Interiors and brings his expertise in interior design and project management to each assignment, and leads the design process for many complex, high-profile interior design projects. He has also served as the President of the New England IIDA Chapter of the International Interior Design Association, a professional organization for leading interior designers.

## B. Company Information

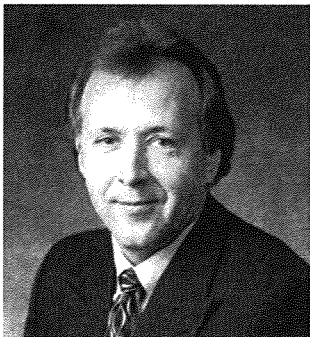
### Principal Profiles



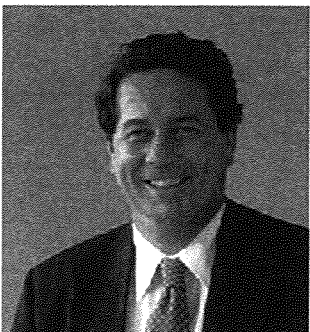
**Patrick Curley, AIA**, is a Principal of the firm and leads the College and University Practice Group. He has over twenty years of architectural experience specializing in various higher educational facilities. Through these diverse project types, he has developed an exceptional ability to communicate with diverse user groups and stakeholders in order to achieve consensus and deliver successful projects to his clients. Patrick received a Master of Architecture from Yale School of Architecture as well as a Bachelor of Fine Arts from Trinity College.



**George Delegas, AIA** is a Principal of the firm's Boston office and will lead the K-12 Education and College and University Practice Groups within that region. George brings over 30 years' architectural and planning experience, managing the entire design and construction process in Massachusetts, Florida, New York and overseas. George received a Bachelor of Architecture from Boston Architectural College. He is also affiliated with the Boston Society of Architects, the National Council of Architectural Registration Boards, SCUP North Atlantic Region, APPA, Society of Marketing Professional Services, and the Cambridge Recycling Advisory Committee.



**Michael S. Marcinek**, is a Principal of the firm and Chief Financial Officer of the firm. Mike is responsible for setting the firm's strategic direction, financial reporting and strategic financial planning. He received a bachelor of science degree in accounting from the University of Connecticut and his MBA from the University of New Haven. He currently serves on the Boards of the Valley United Way, Junior Achievement, Shelton Economic Development Corporation, Valley Chamber of Commerce, Parent Child Resource Center and the Dan Orlovsky Foundation.



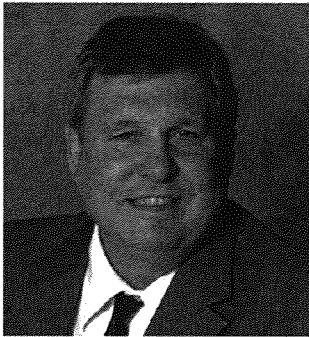
**Christopher (Kip) McMahan, AIA, NCARB, LEED AP BD+C**, is a Principal of the firm and brings over twenty-five years of architectural experience to the firm's College & University Practice Group. He has provided planning and design services to higher education, nonprofit institutions, and real estate developers throughout New England and New York City. Kip received his bachelor of architecture degree from the Rhode Island School of Design. He has volunteered on the boards of several non-profit arts organizations, serving five years as chairman of the RI State Council on the Arts. Currently, he is a board member of the New England Foundation for the Arts, and is board Vice President of the Veterans Memorial Auditorium Foundation.

## B. Company Information

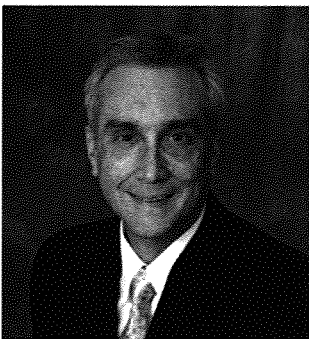
### Principal Profiles



**John C. Oliveto, PE**, is a Principal of the firm and MEP Engineering. John's primary responsibilities include marketing, managing project teams, controlling project budgets and schedules, overseeing quality of work, and executing the projects. His guidance of the engineering staff ensures well-coordinated documents for all of the firm's practice groups. John received his bachelor of science in civil engineering from Manhattan College. He currently serves on the Boards of the Bridgeport Regional Business Council and Bridgeport's Cardinal Sheehan Center.



**Herman L. Szeker, SE, PE**, is Principal of the firm and the Principal of Structural Engineering. Herman is responsible for structural analysis, systems selection and design, cost evaluation, specification preparation, and supervision of contract documents for both new and renovated work. Herman has over thirty years experience in structural design. He received a bachelor of science and master of science both in civil engineering from Cleveland State University.



**Richard K. Voelker, AIA**, is Principal of Project Management for the firm responsible for the overall leadership, direction, goal setting and mentoring of the firm's Project Managers and ensures that the firm's financial and management policies are maintained consistently throughout all offices, for all projects, to meet the our clients' needs. Rick has over 35 years experience as a registered Architect with extensive experience in project programming, architectural design, site planning and interior design, preparation of presentation drawings as well as working drawings and specifications and contract administration for projects of commercial, corporate, industrial, educational and residential use. Mr. Voelker received his Bachelor of Architecture from Rensselaer Polytechnic Institute.

**Demographic Consultant**

**New England School Development Council (NESDEC)**



*New England School Development Council*

28 Lord Road, Marlborough, MA 01752 — Tel: 508-481-9444 — [www.nesdec.org](http://www.nesdec.org)

## **GENERAL INFORMATION ABOUT NESDEC**

The New England School Development Council (NESDEC) is an organization whose general purpose is the development of high performance schools throughout the Northeast. NESDEC was founded in 1946 under the auspices of the Harvard Graduate School of Education. Based upon the concept of collaboration, NESDEC seeks to meet the needs of school districts by pooling resources so that many can do together what one cannot do alone.

Today, NESDEC represents approximately 400 cities and towns in New England and offers services to school districts in four areas:

- ◆ **Planning Services.** NESDEC offers services related to strategic planning, special education audits, dropout prevention, collaboration/shared services, short and long range facilities planning (including enrollment forecasting, capacity determinations, option development, etc.), as well as services related to other aspects of school district planning.
- ◆ **Executive Search.** NESDEC assists School Boards in filling Superintendent, Assistant Superintendent, Principal and other educational leadership positions.
- ◆ **Learning and Teaching.** NESDEC sponsors workshops/seminars and on-site training/coaching for school administrators, teachers, school board members and others within the educational community. From time to time, NESDEC also offers an Office Professionals Conference, which focuses on issues of importance to support staff. In addition, NESDEC periodically sponsors a New England School Facility Conference, bringing all six New England states together around the topic of school facility planning.
- ◆ **Research and Development.** NESDEC undertakes research or development projects funded through public, foundation or corporate sources, which have a high potential for enhancing the performance of schools and school districts.

NESDEC is governed by a Board of Directors and administered by an Executive Director who is assisted by professional/support staff in the Marlborough, MA office and associate staff located throughout New England.

A not-for-profit organization, NESDEC is financed through affiliation fees, contract service fees, and grants received from public and private sources.

**Environmental and Site/Civil Engineering**

**Fuss & O'Neill EnviroScience, LLC**





## Background and Qualifications

Established in 1987, Fuss & O'Neill EnviroScience, LLC (formerly EnviroScience Consultants, Inc.) is a multi-disciplined industrial hygiene and environmental consulting firm serving the entire Northeast.

Our team staff is comprised of over 35 professionals including a Certified Industrial Hygienist, licensed asbestos and certified lead consultants, architects, technicians, environmental engineers and administrative support staff. We offer a full range of services including environmental consulting, industrial hygiene, asbestos and lead based paint testing and consultation, laboratory analysis, health and safety consulting and monitoring, environmental engineering and environmental sciences. Our team is recognized in the environmental field for achieving the client's objective, providing quality services and completing project work on time and within budget.

Our staff is comprised of degreed professionals who regularly update their knowledge through advanced college course work and specialized training programs. The size and depth of the organization ensures that all projects can be consistently staffed with the most qualified personnel.

### **Geographical Region**

EnviroScience is headquartered in Manchester, Connecticut and maintains branch offices in Trumbull, Connecticut, and Boston, Massachusetts. We have successfully supported projects throughout New England and New York. Our staff maintains licenses and certifications to practice environmental engineering and consulting services throughout this geographical area.

### **Licensing**

Our personnel maintain all the requisite certifications to perform asbestos, lead based paint, industrial hygiene and environmental engineering services in the State of Connecticut, Massachusetts, New York, and most New England States.

### **Laboratory Resources**

EnviroScience conducts Phase Contrast Microscopy (PCM) analysis both in the field and in our in-house laboratory. All analysts are listed with the AIHA Asbestos Analyst Registry and as a company we participate in the round robin testing programs. We use EMSL Analytical for asbestos bulk samples (PLM) and Transmission Electron Microscopy (TEM) analysis. This laboratory is accredited by AIHA, NIST, and NVLAP and is certified by the State of Connecticut.



### Equipment Resources

EnviroScience owns over 220 low volume and high volume environmental sampling pumps, which are used to take air samples to monitor abatement projects and perform indoor air quality studies. These pumps are the top-of-the-line and assure the client of accurate air samples during the abatement project and for final clearance. We have 17 phase contrast microscopes to perform air analysis for asbestos abatement projects.

EnviroScience has five X-Ray Fluorescent analyzers in-house for use in on-site lead based paint testing. We have four RMDs and one Scitec Map 4.

EnviroScience maintains state-of-art field equipment for use in soil and groundwater investigations and environmental engineering programs. We have in-house AUTOCAD capabilities for mapping and design purposes, and regularly use computer aided groundwater-modeling program.



## Services

### **Asbestos**

EnviroScience offers complete asbestos consulting and management services for institutional and government facilities, as well as residential buildings. We provide asbestos inspections, management plans, abatement specifications, and project monitoring services. EnviroScience has conducted over 6,500 asbestos building surveys, and designed and monitored over \$650 million worth of abatement activities. We offer complete laboratory services including Polarized Light Microscopy (PLM) and Transmission Electron Microscopy (TEM) analysis.

### **Lead-Based Paint**

EnviroScience is one of the largest lead based paint testing firms in the Northeast. We have tested over 40,000 housing units for lead based paint using portable X-Ray Fluorescent (XRF) analyzers. We have designed over \$65 million of lead based paint abatement activities. In addition to the hazardous material element of the abatement project, our lead abatement design team includes architectural design capabilities for specifying replacement components.

### **Indoor Air Quality**

EnviroScience has a staff of personnel credentialed in aspects of indoor air quality, including a doctorate in microbiology and certified industrial hygienists, to address the varied challenges presented by issues in the various building settings. EnviroScience develops a scope of work based upon input from the client, accounting for the personal issues as well as those of building construction and operation. With detailed instruction to field personnel and provision of state of the art equipment such as moisture metering and fiber-optic scoping, and with the backing of one of the advanced laboratories in the country, a thorough examination of the problem can be made. EnviroScience provides a detailed report of survey with effective suggestions and recommendations for remediation as necessary.

### **Industrial Hygiene**

EnviroScience has extensive experience in indoor air quality investigations, industrial process evaluations for chemical and physical hazards, lead safety and health programs affecting the worker and the community, as well as risk assessments as they relate to worker safety and health. We provide hazard identification procedures and develop protocols to evaluate chemical substances, which may be toxic or flammable. We also provide evaluation and measurement of physical agents such as noise, heat, lighting, and various types of radiation, which have the potential to harm employees. These protocols may involve extensive sampling of the environment to determine compliance with OSHA regulations, to evaluate the effectiveness of controls and to determine exposure risk. We also provide routine monitoring at the worksite to assist the client with employee exposure assessments.



### **Radon**

Radon is the leading cause of lung cancer among non-smokers and in recent years has become an issue with schools and public buildings as well as homes. Fuss & O'Neill EnviroScience is equipped to perform radon surveys on a massive scale involving schools. During the 2006-2007 and 2007-2008 school years the firm used over 10,000 charcoal canisters for surveys among many dozens of schools state-wide. Also, the firm is equipped with continuous radon measurement instrumentation for analysis of radon levels on an hour-by-hour basis.

### **Mercury**

Fuss & O'Neill EnviroScience is equipped to respond to spills and other issues involving mercury. Mercury is a crucial issue, especially involving schools, as immediate action is required to identify the extent of contamination and to isolate it so as not to put building occupants at risk and to prevent the need for wide-spread facility decontamination. EnviroScience has access to real time metering for rapid assessment of the extent of contamination and can provide 24-hour service.

### **Occupational Safety and Health**

EnviroScience provides a wide range of health and safety services related to exposure in the workplace and at contaminated/hazardous waste sites. Our staff is comprised of Certified Industrial Hygienists and other OSHA-trained personnel. We have experience in preparing customized site specific safety and health programs, employee training, worker exposure monitoring, and Safety and Health services related to contaminated sites.

### **Ecological Risk Assessment**

Risk assessments can range from small, relatively straight-forward screening projects to comprehensive, highly technical investigations that integrate field studies, land and water impacts, and ecological exposure. Our risk assessors hold advanced degrees in chemistry, biology, and toxicology, and apply their extensive knowledge of risk assessment to a wide range of projects. We have experience in risk investigations at landfills, former defense contractor facilities and manufacturing facilities, as well as smaller sites like petroleum distributors and office developments. Our clients come from all sectors, including corporations, municipalities, and private citizens.

### **Ecological Wetland Services**

We deliver a precise synthesis of highly technical environmental services including ecological and wetland assessments and evaluations. The staff of Fuss & O'Neill EnviroScience, including staff ecologists and soil scientists, has conducted numerous wetland and watercourse delineations, vegetation surveys, and ecological surveys. Experience in these areas include delineation of wetlands, assessment of ecological integrity, assessment of upland ecological, design, and evaluation of constructed and identification and evaluation of sensitive ecological communities (e.g., vernal pools, rapid bio-assessment of streams and application and assurance of compliance with local, State, and Federal permits potentially affecting wetlands and watercourses.)



### **Human Health Risk Assessment**

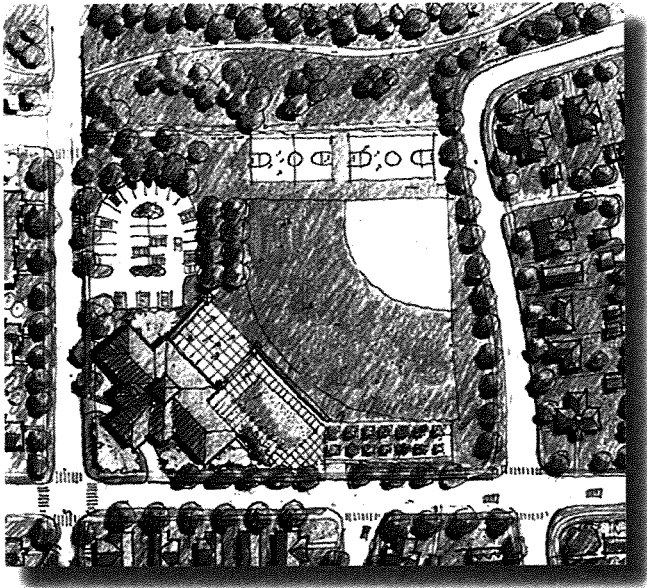
Initially established in the 1980s as a means for assessing the potential risk associated with EPA Superfund sites, human health risk assessment is much more widely used today. The concept has been adopted by many states in their contingency plans and remediation regulations. Environmental data are reviewed and compared to toxicological data, directly or through modeling, to create a realistic idea of the current and potential future risk at a contaminated site. We have been successful in performing both human health and ecological risk assessments because Fuss & O'Neill EnviroScience takes a straight-forward approach to risk assessment. In order to undertake a risk assessment, the reason the risk assessment is being conducted must be understood so that project Data Quality Objectives (DQOs) can be established. Knowledge of the current use of a site and an understanding of the planned or plausible future uses of the site are essential to determine reasonable exposure assumptions that are site-specific. Accurate exposure assumptions are essential in protecting human health and the environment while minimizing the need for environmental remediation.

### **Training and Education**

EnviroScience offers standard and customized training courses for its clients and the general public. We are approved by the Connecticut Department of Public Health (DPH) to provide Lead Based Paint Inspector and Abatement Training, and offer state and EPA approved asbestos courses. In addition, we provide customized programs in lead exposure, occupational health and safety, confined spaces, hazard communication, and related topics.

**Landscape Architecture**

**Blades + Goven, LLC**



*Blades & Goven, LLC* is a team of design professionals offering consulting landscape architectural, site planning and related design services to clients in the public and private sectors.

The firm was established in 1996 through the merger of the independent practices of the firm's two principals, Barry Blades and Earl Goven. The firm combines the talents and experience of the two principals to provide enhanced capabilities in terms of client responsiveness, design expertise and range of services. In addition, the firm maintains its commitment to the involvement of the principals throughout all project phases.

By emphasizing a team approach with a priority on achieving the client's goals and objectives, the principals of Blades & Goven have established a proven track record of completed projects. Through a close working relationship with Federal, State and municipal agencies, the firm has

successfully guided many of these projects through the regulatory processes and the acquisition of environmental permits.

Blades & Goven utilizes state-of-the-art computer technology for the preparation of project documentation. In addition to the benefits of computer-aided design and project visualization, this technology provides clients with seamless integration with their own computer databases.

Members of the firm hold professional licenses for the practice of landscape architecture in the states of Connecticut, New York and Massachusetts. Blades & Goven is a State of Connecticut certified Small Business Enterprise (SBE).

***Design***

- Public and private schools
- Private Clubs
- Corporate offices
- Single family residential
- Multi-family housing / subdivisions
- Parks and plazas
- Athletic facilities
- Commercial development

***Planning***

- Site analysis and evaluation
- Feasibility studies
- Program development
- Master planning

***Environmental Planning***

- Environmental assessment and analysis
- Regulatory permit processing
- Wetlands mitigation and enhancement
- Stormwater management

***Construction Services***

- Construction documentation
- Contract administration
- Environmental monitoring

***Specialized Services***

- Low impact development
- Roof-top design
- Artificial turf athletic fields



## **Company Profile**

AB Consulting established in 1998, to provide engineering and consulting services, primarily for Vertical Transportation system, to Architects, Engineers, Owners, Property Managers and Governmental Agencies.

AB Consulting has cumulative over twenty-nine (29) years of experience in design, construction and consulting engineering for various Vertical Transportation devices.

AB Consulting offers the following engineering services:

- 1) Traffic analysis of the vertical transportation system.
- 2) Survey and analysis of existing system.
- 3) Modernization/Conversion project.
- 4) Design and prepare contract document for new and modernization project.
- 5) Inspection and review of maintenance program.
- 6) Represent owner to witness the final inspection test and prepare punch list.
- 7) Construction supervision and review of the installation in compliance with the contract document.

The Vertical Transportation system includes elevator, escalator, side walk elevator, dumbwaiter, moving walk and other similar equipments. We have experience in various elevator systems such as hydraulic, geared traction, gearless traction, twin jack, telescopic, and rope-hydraulic type operating devices for passenger and freight transportation.

AB Consulting has broad experience in verity and special design requirement for unique projects. Our design engineering experience coupled with education enables to manage all type of projects from simple to complex requiring careful and special design approach.

AB Consultant engineering approach begins listening client and end user, collecting data, evaluate various options of system and features suitable for the project.

AB Consulting offers complimentary services of reviewing the related requirement of mechanical, electrical, plumbing and fire protection engineering system to ensure the code compliance.



**Security, Technology and Telecommunications**

**D'Agostino & Associates, LLC**

# D'AGOSTINO & ASSOCIATES

*Technology Design & Support Services*

## COMPANY PROFILE

### About Us

D'Agostino & Associates is a premier technology design and support service company. Years of research, practice, and field experience gives us the edge at anticipating the direction and development of new technologies. Our design professionals specialize in assessing client needs to implement cost efficient and practical strategies, while evaluating each project thoroughly to incorporate the best case-specific technologies to efficiently blend these needs with the perfect balance of state-of-the-art products.

### Design Service

Our technology design experience and product knowledge ensures successful creation of bidding documents for the installation of converged networks and technology systems, which include the following:

- Technology Evaluation
- LAN, WAN and MAN Infrastructure Design
- Network Infrastructure Design; Ethernet and WiFi
- Technologies over Internet Protocol; Voice (VoIP)
- Classroom Technology
- Server & Data Room Design
- Security System Design; Intrusion Detection, Access Controls & Video Surveillance
- Audio Video Technology; Video Distribution, Digital Display Messaging
- Documentation Preparation
- Estimating
- IT strategic Planning
- Service Provider Negotiations & Management
- Contract Negotiations
- Owner Relations
- Contractor Relations
- Construction Management

### Bid Management Service

Our support service specialists offer bid management support services which includes advertise bid documents, solicit vendor pricing, manage project-specific informational conferences, offer bid submittal analysis, evaluate vendors and provide award recommendations.

### Construction Management Service

At D'Agostino & Associates, we offer a range of construction management services for the successful implementation of the intended technology system. We will manage the overall construction, coordinate and then verify each phase of the installation up until its completion. Our goal is to provide a service that confirms that the specified product has been installed, cost expectations and specified standards are met and the project is completed on time.

### Corporate Philosophy

At D'Agostino & Associates, we strive to continually evolve with the newest technology trends to incorporate them within all of our design and support services. As technology changes, we are committed to responding to these innovations in order to accurately define and satisfy our client's needs.

**D'AGOSTINO & ASSOCIATES**

*Technology Design & Support Services*

**Cost Estimating**

**Leach Consulting Company, LLC**

# LEACH

Leach Consulting Company LLC  
128 Garden Street  
Farmington, CT 06032

## COMPANY PROFILE

Leach Consulting brings with it thirty-eight years in the construction industry specializing in the University, Institutional, Educational, Corporate, Commercial and Health-Care markets. We work with clients in, both, the public and private sector and are consistently able to adjust the level of services we offer to accommodate a specific need.

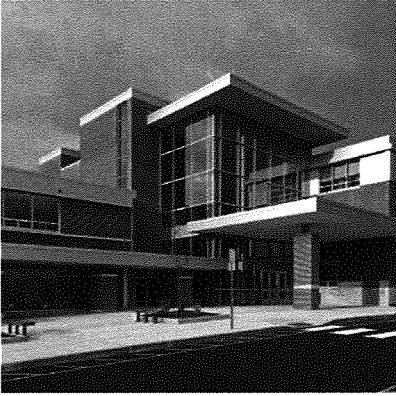
Leach Consulting has specific expertise in the Master plan and Pre-Construction Phase Development, integrating Design and Budget control to maximize the clients' program without sacrificing program or aesthetics.

The firm's Principal, Kevin Leach, is a Professional Engineer; he has a Bachelor of Science Degree in Civil Engineering from Lehigh University and completed his Graduate Studies at Hartford Graduate Center. Kevin's professional affiliations include the Associated General Contractors of America, the American Society of Professional Engineers, the Connecticut Society of Professional Engineers, as well as, inclusion in the "Who's Who in the East" and is a Member of the University of Hartford's Masters Architectural Program Advisory Board.

During Kevin's career in the industry he has worked with the Pike Company, as Vice President in their Hartford Region offices and successfully operated his own business, giving him the opportunity to work with many well-respected clients.



## C. Relevant Experience



FT recognizes the value of innovation and creative solutions to our clients. As a market leader in the educational and government design field, we have extensive experience in performing the services outlined in the RFQ. Consequently, we commonly perform facilities conditions assessments for a multitude of clients and building types. Many of these studies have also resulted in subsequent design projects.

Our municipal and educational assessment experience includes:

- **Town of Monroe's** Library, Senior Center and Municipal Building Facilities Study
- Municipal Buildings Capital Improvement for the **City of Bridgeport**
- **City of Torrington** Municipal Facilities Study
- Municipal Facilities Study for the **City of Wilton**
- **Norwalk Public Schools** Facilities Analysis
- System-wide Educational Master Plan Study for **Manchester**
- System-wide and High School Feasibility Study for **New Milford**
- System-wide Master Planning Study Update for **New Haven**
- System-wide Educational Master Plan Study for **New London**
- **Shelton Schools** Long Range Plan
- **Tolland** System-wide Space Study
- **Weston Schools** System-wide Case Study
- **Wilton** School Options Study



The projects highlighted above are only a sampling of the many facility analyses that FT has performed. Our team of architects and engineers has the experience and know how to thoroughly review your facilities and make informed decisions regarding work required for a facilities and demographic assessment.

FT's studies focus on the assessment of various elements including, but not limited to:



- Building renovation
- Roof replacement
- Building envelope including exterior walls, doors, and windows
- Mechanical and electrical systems including HVAC, fire alarm, and public address system
- Code compliance
- Interior finishes including floors, walls and ceilings
- Security, technology and telecommunications
- Sustainability and energy efficiency
- Cost estimating
- Exterior site such as parking, driveways, and curbing

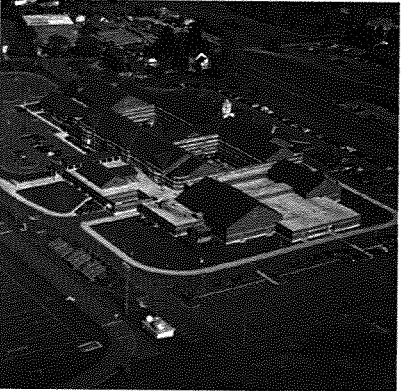
## C. Relevant Experience



### Demographic Assessment Experience

Many of our studies have involved working with demographic/enrollment consultants to deliver complete assessments addressing the client's needs. For this project, we have included the expertise of New England School Development Council (NESDEC) to perform the Demographic Assessment.

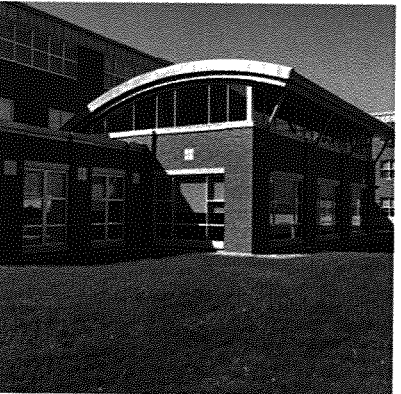
NESDEC provides all the necessary background information, involves community and staff throughout the process, and prepares a planning document ready for use by planners and decision-makers. NESDEC's staff brings expertise in educational program and facilities at all levels--elementary, middle and secondary.



NESDEC prepares and updates approximately 250 enrollment forecasts each October. Additionally, NESDEC has prepared over 150 Community Demographic Profiles for those districts needing additional background data as a context for enrollment projections. These profiles are based on information from the U.S. Census, updated with more recent data, interviews with municipal officials, regional planners, and others familiar with each local community being studied.

### K-12 Education Experience

Educational facilities are one of FT's major service areas. Since 1990, the firm has worked on more than 250 public and private school projects, totaling over ten million square feet with a combined construction value approaching \$2.5 billion.



Our Education Practice Group focuses on designing educational facilities to create an environment that fosters advanced student academic performance. Our clients benefit from an award-winning staff of professionals who are knowledgeable of current teaching trends and continually strive to understand the client's needs through our national research.

Our goal is to translate the vision of our clients into architecture that will meet the educational needs of today and tomorrow.

### Municipal Experience

Our team is thoroughly conversant with municipal and public agency project delivery methodologies and is committed to a philosophy that fully responds to the unique requirements of governmental projects. Our professional staff includes innovative architects, engineers and programmers. We understand the importance of efficiency, security, sustainability, public image and historical significance in all municipal projects.

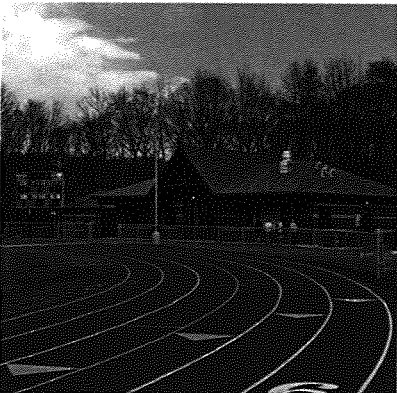
## C. Relevant Experience



Recognized as one of the leading firms in the Northeast providing public sector services, our staff has worked on many diverse and challenging municipal building types including city halls and town facilities, postal services facilities, fire and police facilities, senior centers, libraries, landmark historic restorations, naval facilities, correctional institutions, and courthouses.

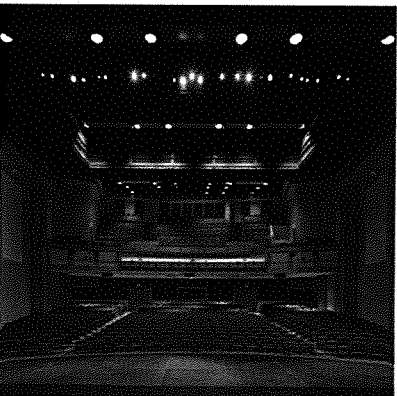
As a full-service architectural and engineering firm, we are ideally structured for delivery of projects involving space needs assessments and building evaluations. Our efficient approach to assignments has resulted in cost-effective and on-time delivery of our public sector projects.

### Familiarity with Town of Monroe and Monroe Public Schools



As noted in our Letter of Interest, FT has provided architectural and engineering services to the Town of Monroe since the early 1960's. We performed a feasibility study in 1965 and designed the original new Chalk Hill Middle School in 1966. We also designed Fawn Hollow Elementary School and the redesign of Monroe Elementary School after it was damaged by fire. In the 1970's, we provided engineering services for the interior renovation of three elementary schools.

Our work at Masuk High School involved major renovations and expansion to the 125,000 s.f. building including 103,000 s.f. of new construction. The main objectives were to upgrade the existing school to meet current fire code and maintenance standards, improve circulation and traffic flow of students, create an updated exterior façade, and provide a modern educational facility, keyed on both present and future needs. The new 43,000 s.f. physical educational complex offered expanded athletic fields, additional tennis courts, and an indoor swimming pool, increasing the town's recreational facilities considerably.



FT performed the study and design for the expansion of the town's recreational facilities. This included a new library/municipal building on existing Town property adjacent to the Town Hall. This 40,280 s.f. freestanding structure also houses the community and senior center on the upper level.

Currently we are working with the Monroe Public Schools to provide stair improvements to the Natatorium at Masuk High School and a Schools Security Study for the five schools in the District.

### ADA Compliance

Our experience with all regulations, codes and requirements are demonstrated by a long track record of successfully completed Connecticut school projects. Our team continuously stays abreast of the ever evolving regulatory industry often serving as technical experts on proposed code language. This participation provides first hand insight into new code amendments and allows the team to anticipate designing to the latest code.



## C. Relevant Experience



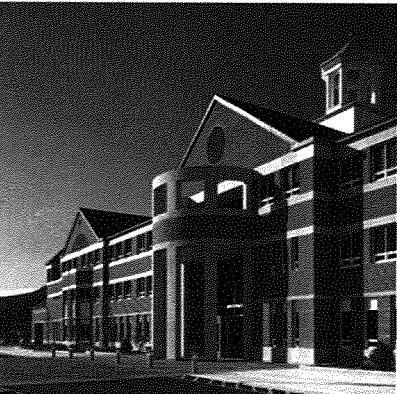
Fletcher Thompson has experience in providing schematic design, construction documents, bidding services and construction administration services for ADA improvements at numerous Connecticut schools. The scope of work for these projects have included installation of:

- Elevators and ramps to provide access to the main buildings;
- Chair lift for access to stages in auditoriums and gyms;
- Handrails in the auditorium and gymnasiums;
- HC accessible seating and assistive listening systems in auditoriums and gymnasiums;
- Visual fire alarm systems;
- ADA compliant drinking fountains;
- ADA compliant door hardware and improved clearances through doorways throughout the building;
- Improvements to the restroom facilities;
- Compliant work stations in the science and art classrooms;
- Signage; and,
- Access routes and ramps to portable classrooms.



### Connecticut State Department of Education

FT has a long and successful history with the Bureau of School Facilities, now under the Department of Construction Services and the State Department of Education, and its staff of reviewers and administrators. Our team is very familiar with the DOE's regulations and code requirements, as well as its approval and funding procedures. Members of the Educational Practice Group at FT have been instrumental in assisting school districts across the state prepare and submit ED049 forms for approval and reimbursement, and in the production of educational specifications for every type of school from new construction through renovated and expanded schools. Our track record for successful approvals is excellent, and because we are very comfortable with the process, we know the intricacies of getting projects approved. We have submitted and have had approved over 50 public school projects over that last 10 years. Moreover, we also have a strong understanding of eligible and ineligible costs and we will help guide you with the grant process as well as maximize your reimbursement for the project.



Lastly, we have assisted many school districts with the preparation of the State Change Order Forms and worked with the state reviewer George Semenech to have these approved within the state's deadlines for acceptance.

## C. Relevant Experience

### Educational Studies List



#### Darien

Toekeneke Elementary School  
Middlesex Middle School  
Darien High School

#### Derby

Derby High School/Middle School

#### Fairfield

Fairfield High School

#### Guilford

Two Middle Schools  
Guilford High School and Adams Middle School

#### Killingly

Killingly High School\*  
System-wide

#### Litchfield

System-wide

#### Manchester

Manchester High School  
System-wide

#### Meriden

Orville H. Platt and Francis T. Maloney High Schools\*

#### New Canaan

Saxe Middle School  
New Canaan High School

#### New Hartford

Bakerville Consolidated School

#### New Haven

System-wide

#### New London

System-wide

#### New Milford

New Milford High School\*  
System-wide

#### Newtown

Newtown High School\*  
Newtown Middle School

#### Norwalk

System-wide

#### Oxford

System-wide

#### Plainville

Louis Toffolon Elementary School and  
Plainville High School

#### Regional School District No. 6

Wamogo Regional High School and Vo-AG Center\*  
Warren School\*  
James Morris School\*  
Goshen Center School\*

#### Shelton

Long Range Plan

#### Simsbury

Simsbury High School\*

#### Southington

John A. DePaolo and John F. Kennedy Middle Schools\*

#### Stamford

System-wide Elementary Schools

#### Stonington

Three Elementary Schools  
Stonington High School\*

#### Thompson

System-wide

#### Tolland

System-wide

#### Torrington

System-wide Needs Assessment  
Vogel-Wetmore Elementary School\*  
Southwest Elementary School\*  
Torrington High School

#### Waterbury

Maloney Magnet School\*

#### Watertown

John Trumbull Primary School\*

#### Weston

System-wide  
Weston Intermediate School\*  
Weston Middle School  
Weston High School\*

#### Westport

Green Farms School  
Assumption School  
Hillpoint School

#### Wethersfield

Webb Elementary School

#### Wilton

System-wide  
Cider Mill Elementary School

\* Subsequent Fletcher Thompson Design Projects

## C. Relevant Experience

### Municipal Facilities List



#### City/Town Halls

**City of Bridgeport**  
City Hall Renovations/Code Upgrades  
Municipal Buildings Capital Improvement

**City of Derby**  
City Hall Renovations

**City of Hartford**  
City Hall Annex Historic Restoration  
55 Elm Street Renovations

**City of Milford**  
City Hall Historic Restoration

**City of Torrington**  
City Hall Historic Renovations

**Town of Bolton**  
Town Hall Renovation and Expansion\*

**Town of Deep River**  
Town Hall Feasibility Study\*

**Town of Simsbury**  
Town Offices Feasibility Study and Design\*  
Simsbury Farms Recreation Complex Needs Assessment

**Town of Thomaston**  
Town Hall and Opera House Feasibility Study and Historic Restoration and Expansion\*

#### Community/Senior Centers

**City of Danbury**  
Senior Center Expansion Study\*

**City of Shelton**  
New Senior Center

**Town of Columbia**  
New Senior Center\*

**Town of East Granby**  
New Community Center\*

**Town of Middlebury**  
Shepardson Community Center Refurbishment\*

**Town of Suffield**  
Senior Center Adaptive Re-Use/Renovation\*

#### Libraries

**City of Norwalk**  
South Norwalk Branch Library

**City of Stamford**  
Ferguson Public Library

**Town of Stafford Springs**  
New Public Library

**Town of North Branford**  
Atwater Memorial Library  
Edward Smith Library

**Town of South Windsor**  
South Windsor Public Library

#### Municipal Studies

**City of Torrington**  
Municipal Facilities Study

**Town of Monroe**  
New Library and Municipal Building Study and Design

**Town of Suffield**  
Municipal Properties Study\*

**Town of Wilton**  
Municipal Facilities Study

#### Public Safety

**City of Bridgeport**  
New Central Fire Headquarters/Vehicle Storage Administration  
New West Side Fire Station

**CT Department of Construction Services**  
Stones Ranch Military Fire Station

**Town of Fairfield**  
New Police Headquarters/Vehicle Maintenance Garage

**Town of Stratford**  
New Central Fire Headquarters

**Town of Windsor**  
Public Safety Complex Study

\* Prior experience of Schoenhardt Architecture + Interior Design, a Fletcher Thompson Company

## New Haven Public Schools

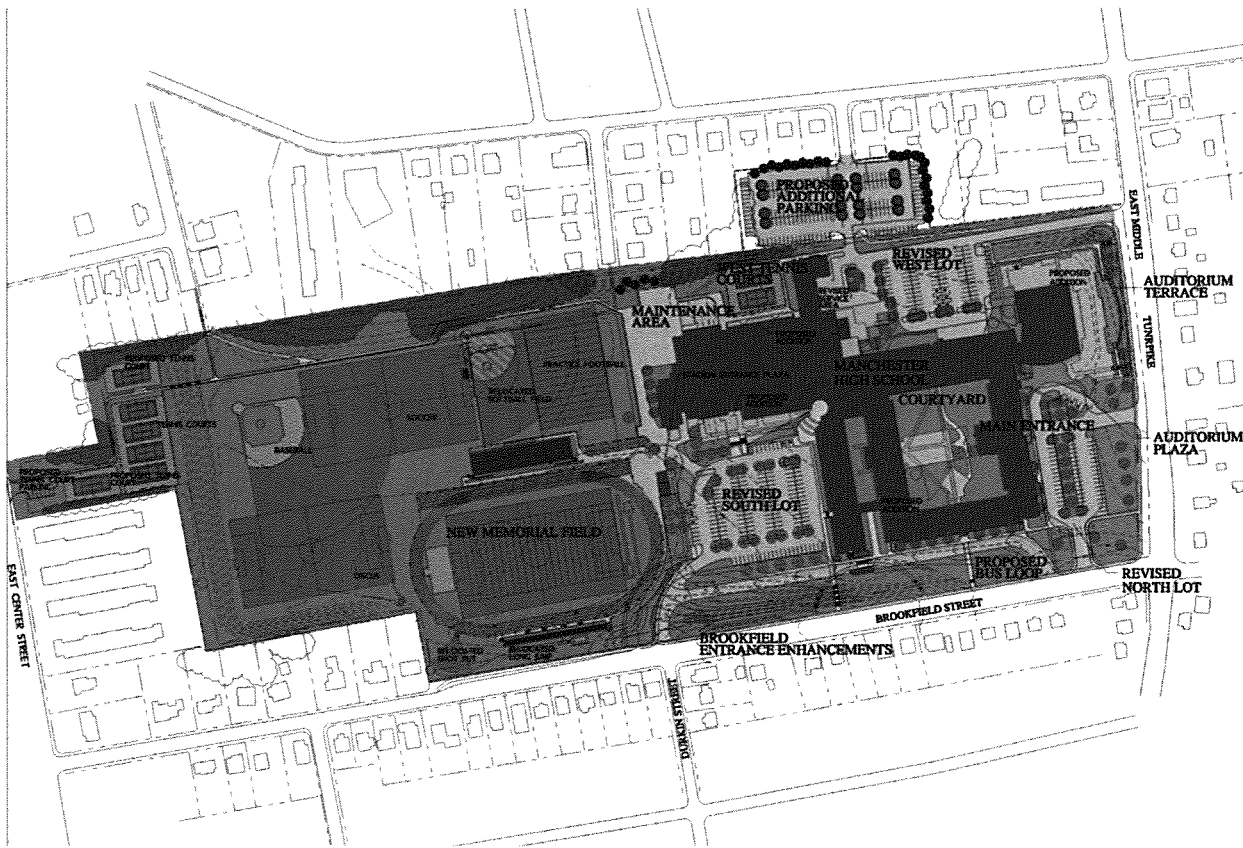
System-Wide Master Plan Update | New Haven, Connecticut



**F**letcher Thompson was selected by the Board of Education to develop a Comprehensive Facilities Master Plan Update. The Comprehensive Facilities Plan is a multi-year prioritized action plan establishing a timeline and cost of meeting the District's facilities' needs based on a combination of educational philosophy, enrollment projections, and facility condition analysis. The objective of the Master Plan Update was to develop an assessment of needs and recommendations for action for the twenty-three (23) facilities not already included in the New Haven School Construction Program, with an ultimate goal of identifying the next group of priority projects.

# Town of Manchester

School System Case Study | Manchester, Connecticut



The Town of Manchester's fourteen public school buildings were in dire need of infrastructure upgrades and facility expansion to accommodate both program changes and shifting enrollments. Fletcher Thompson was hired to evaluate the existing buildings, provide conceptual designs for renovation and expansion, and develop cost estimates in concert with the selected CM. The Manchester High School expansion portion included six separate building additions and significant alterations, infrastructure and code upgrades to the existing facility. This project accommodated major high school program changes, an increasing enrollment projected to peak at 2,200 students, facility maintenance, repairs, and system replacement requirements.

## Norwalk Public Schools

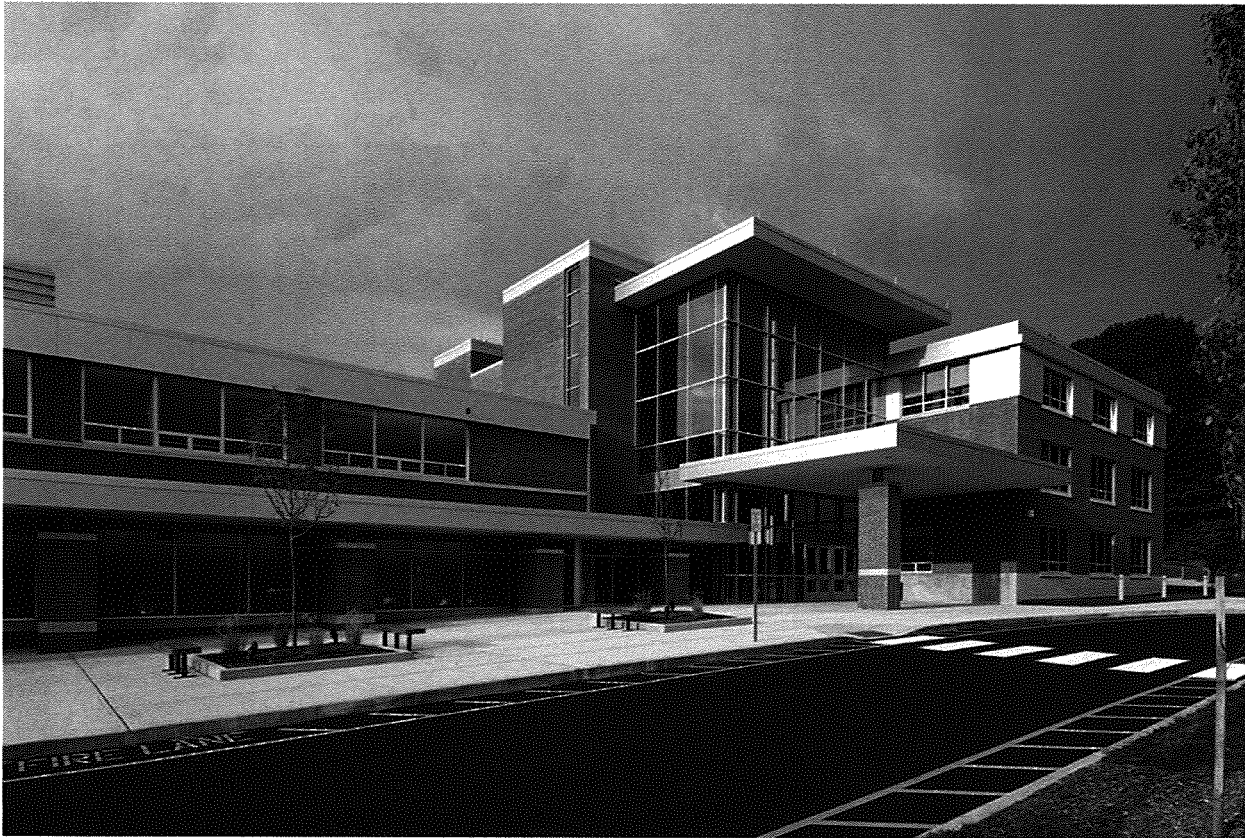
Analysis and Priority Needs Assessment | Norwalk, Connecticut



The City of Norwalk and Norwalk Public Schools (NPS) was faced with increasing enrollment projections that required a system-wide thorough analysis to determine the program impact to the school system and also address maintenance and upgrade of life-safety systems, handicap accessibility compliance, and building system infrastructure repair. The project scope included providing due diligence reports of each school that validated and updated the findings in the Norwalk Public Schools Board of Education Millennium Plan completed in 1999 that addressed long term capital improvements of the City's public schools. The report was supplemented with new information that was available or had been observed as provided by Norwalk Public Schools. Each school report included an analysis of the building systems including the building envelope (roof, window and wall system), interior systems including flooring (VAT or VCT), walls, doors, door hardware, etc., handicap compliance per code requirements and a review of the building's infrastructure including HVAC, plumbing, electrical and fire alarm systems.

## Shelton Public Schools

Long Range Plan | Shelton, Connecticut



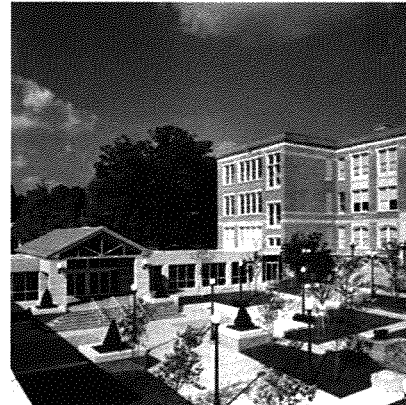
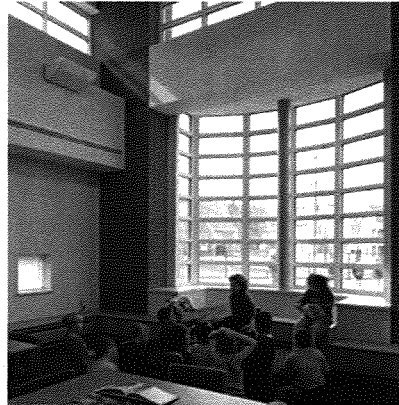
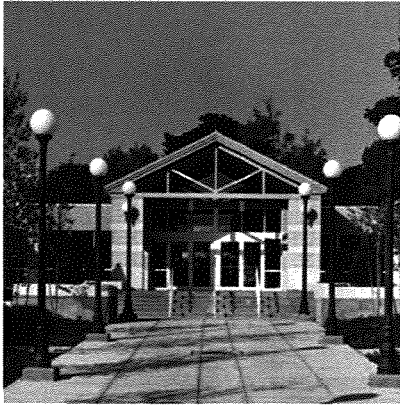
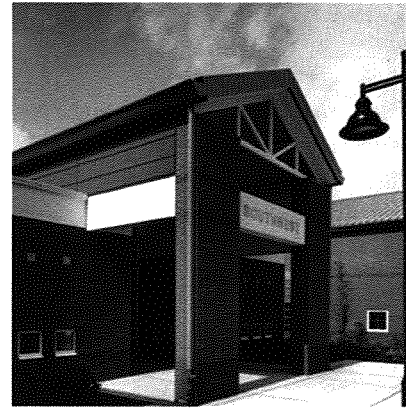
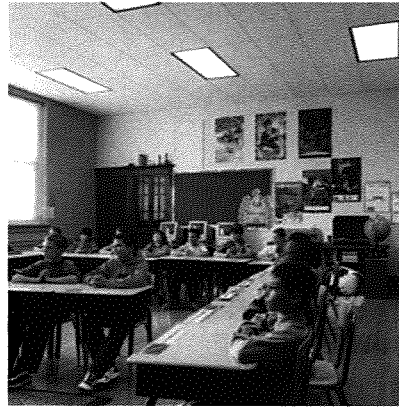
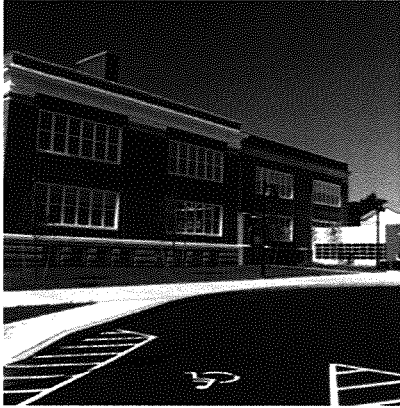
Fletcher Thompson was selected by the Shelton Board of Education (BOE) to develop a comprehensive long-range plan for Shelton Public Schools (SPS). Critical issues such as racial balancing, differences in physical facilities, improved security, code compliance and technology infrastructure needed to be addressed system-wide in order to provide modern facilities. As a result, the BOE, SPS and Fletcher Thompson outlined a scope of services that was carried out during the planning process to outline options and alternatives for consideration to serve as a blueprint for future planning for SPS.

In order to respond to the needs of the school district, identify priorities and establish order of magnitude project costs to the City, SPS with the assistance of Fletcher Thompson submitted ED049 grant applications to the state in the spring of 2002 for projects that are related to the long-range plan. They include the following projects:

- Perry Hill School Additions and Like-New Renovations
- Shelton High School Addition and Renovations
- Booth Hill Elementary School Addition and Renovations
- Board of Education Relocation

## Torrington Public Schools

Feasibility Study | Torrington, Connecticut



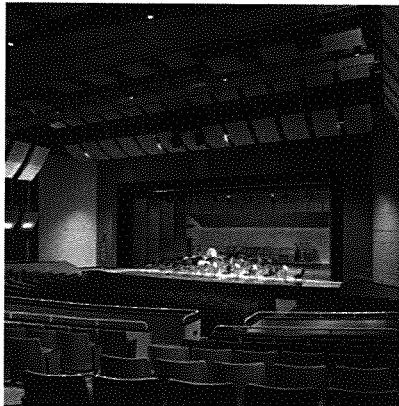
The City of Torrington, faced with significant increasing elementary student enrollment and a need to establish parity within the system's facilities, retained Fletcher Thompson to prepare a feasibility study and comparative analysis of various alternatives for new elementary school space. The primary objective of the study was to assist the Building Committee in formulating a recommendation of whether to build a new elementary school or to renovate and add to two existing schools which face each other across an existing downtown street.

Three design alternatives were developed in an objective attempt to serve the critical needs of the planned school. Each scheme, while different in their design strategies, afforded the Building Committee three viable solutions for comparative analysis. While three design schemes were being developed, the architects assisted the Building Committee in defining site acquisition procedures, meeting with various community groups, establishing procedural criteria with the Board of Public Safety and parking authorities, meeting with both local and state fire marshals, and coordinating with the State Historical Commission, in that the existing schools contribute to a designated historic district. Finally, the three alternatives were estimated for their implementation costs. This information, along with various other quantitative and qualitative criteria, was prepared in a comparative analysis format for evaluation by the Building Committee.



## Wilton Public Schools

Facilities Study | Wilton, Connecticut



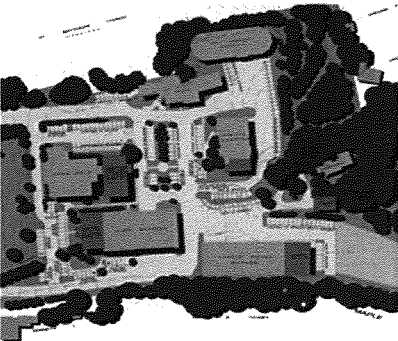
In response to the projected enrollment increases, the Town of Wilton assisted by Fletcher Thompson, evaluated a variety of school system expansion options. The selected option for the existing grades 6-8 school were based on the doubling of enrollment from 600 to 1200 students.

The project involved 67,000 s.f. of new construction housing 40 new classrooms, a new gymnasium, a lobby designed as the building focal point, and a new main entrance efficiently linking the new construction with the existing school. Over half of the existing facility's 110,000 s.f. was fully renovated. The existing library was expanded into a state-of-the-art media center, and the cafeteria/kitchen was expanded and renovated into a flexible assembly area that can serve both the school and community. The total complex was planned to accommodate 9 teams of 6 classrooms / team. The 6-team classrooms are organized around team "forum" spaces located off the primary circulation routes. This planning approach eliminates disruptive corridor traffic and provides opportunities for each team to express its own character in their "forum" areas.

Site work included an improved parent drop-off and bus queue area, both reorganized in response to after-hours community use and to provide safe student access to play fields.

## Town of Wilton

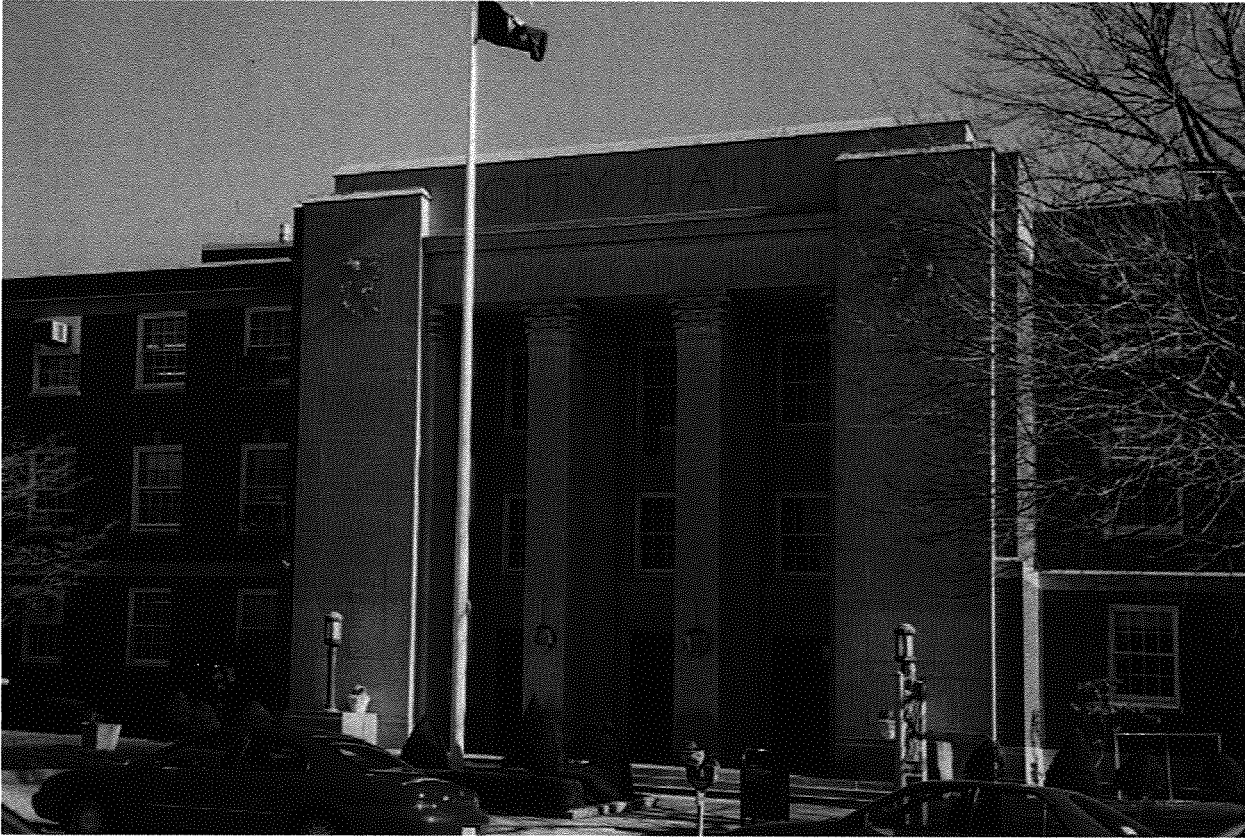
Municipal Facilities Study | Wilton, Connecticut



The first step in this study was to determine the programmatic needs for the anticipated growth over the next ten years for various municipal facilities and to determine the existing building quality and physical conditions of the structures and systems. The town facilities included town hall and annex, police, fire, EMS, and public works garage, currently located on a campus site; parks and recreation and social services currently located in an existing community center; and senior center/youth center and board of education/central offices that will require new facilities. The next step was a site analysis of the town-owned property to determine various options for building expansion and/or renovation to meet these forecasted program requirements.

## City of Torrington

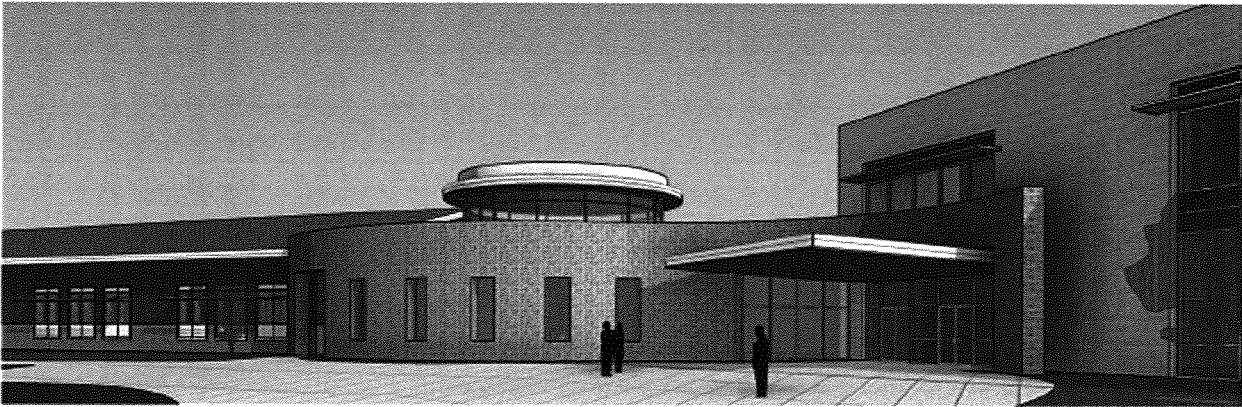
Municipal Facilities Study | Torrington, Connecticut



**F**letcher Thompson was retained by the City of Torrington to review the City Hall, City Barn and the Public Works Facility, to determine the quality and physical condition of the designated city building's architectural and engineering systems, make site observations to confirm the general adequacy of the existing facilities, and make observations concerning the buildings' ability to accommodate future expansion and municipal department requirements. Fletcher Thompson investigated and prepared a Preliminary Facilities Study, and developed a solution for the City of Torrington's immediate and long-term needs.

## Regional School District #16

Long Range Plan | Prospect and Beacon Falls, Connecticut



Fletcher Thompson provided design services required to study the Regional School District 16 Long Range Educational Plan by reviewing the educational specification, demographic projections and building facilities; in order to determine how to best meet the education vision and mission of the District. The District is recognized for having a robust educational system that serves the needs of the non-contiguous communities of both Beacon Falls and Prospect Connecticut. Fletcher Thompson was retained to assist with the review of school facilities and consider options for new construction of facilities, along with renovation of older structures, to create spaces conducive to educational needs as well as prepare students for the future. Through a process of review, study and refinement, three projects were identified in order to most cost effectively meet the education vision of Region 16. Once identified the team presented the planned projects to communities through a series of educational meetings in support of a referendum effort that was passed. In summary, these projects allow Regional School District 16 to serve the needs of the students and communities both now and well into the future.

**Demographic Consultant**

**New England School Development Council (NESDEC)**

**PARTIAL LIST OF DISTRICTS WITH WHICH NESDEC HAS WORKED WITHIN THE  
LAST FIVE (5) YEARS IN FACILITY PLANNING, DEMOGRAPHY, SPECIALIZED  
STUDIES/TRAINING**

<b><u>DISTRICT</u></b>	<b><u>DATE</u></b>	<b><u>CONTACT PERSON</u></b>	<b><u>PHONE NUMBER</u></b>
------------------------	--------------------	------------------------------	----------------------------

**CONNECTICUT**

**ANSONIA** - Ms. Carol Merlone, Supt. 203-736-5095 (Long Range Facilities Plan)  
**BERLIN** - Dr. Michael Chicchett, Supt. 860-828-6581 (Educational Specs)  
**EAST HAVEN** - Mr. Anthony Serio, Supt., 203-468-3262 (Long Range Facility Study)  
**ELLINGTON** - Dr. Stephen Cullinan, Supt., 860-896-2300 (Long Range Facilities Plan)  
**N. BRANFORD** - Mr. Scott Schoonmaker, Supt., 203-484-1440 (Capacity Std and Strat Plan)  
**POMFRET** - Dr. Richard Packman, Supt., 860-928-2718 (SPED Services Review)  
**RSD #13**- Ms. Susan Viccaro, Supt., 860-349-7200 (Education program)  
**SIMSBURY**- Mr. Matthew Curtis, Supt., 860-651-3361 (Demography and Best Use)  
**TOLLAND**- Mr. William Guzman, Supt., 860-870-6850 (Strategic Planning)  
**WALLINGFORD**- Dr. Salvatore Menzo, Supt., 203-949-6502 (Enrollment and Capacity Study)  
**WATERBURY**- Dr. David Snead, 203-574-8004 (Demography (2))  
**WESTON**- Mr. Lewis Brey, Dir. HR, 203-291-1401 (Class size, Mgmt. Review, Demography)  
**WINDSOR**- Mr. Frank Williams, Bs. Mgr., 860-687-2000 (Demography)

**MAINE**

**CAPE ELIZABETH**- Dr. Thomas Forcella, 207-799-2217 (Strategic Planning)  
**FALMOUTH**- Dr. George Entwistle, Supt. 207-781-3200 (Supt., moved to Scarborough, 207-730-4100) (Long Range Facilities Plan)  
Maine Consolidation Study: Dr. Robert Hasson, Supt., 207-829-4800  
**FALMOUTH, FREEPORT, SAD #51-POWNAL, YARMOUTH**  
**PORTLAND** - Mr. Doug Sherwood, Fac. Dir., 207-874-8100 (Long Range Facility Study)  
**SAD #35 et al** - Dr. Jeffrey Bearden, 207-439-2438 (Sped Study and follow-up)  
**SAD #57 Waterboro** - Ms. Lynda Green, Supt. 207-247-3221 (Capacity study)

**MASSACHUSETTS**

**AMHERST** - Dr. Jere Hochman, Supt., 413-362-1810 (Demography, School Capacities)  
**BEDFORD** - Mr. David Coelho, Dir. Finance, 781-275-7708 (Demographic Study)  
**BRISTOL-PLYMOUTH REG VOC TECH** - Dr. Richard Gross, Supt., 508-823-5151 (Demography)  
**CANTON**- Dr. John D'Auria, Supt., 781-821-5060 (Demography)  
**CARLISLE**- Mr. Louis Salemy, SC Liaison, 617-737-8116 (Demography, Manage. Study-2)  
**DANVERS**- Ms. Lisa Dana, Supt., 978-777-4539 (Demography)  
**FRAMINGHAM**- Dr. Edward Gotgart, Bs. Mgr., 508-626-9117 (Demography-2, Best Use Study)  
**FREETOWN-LAKEVILLE**- Dr. Steve Furtado, Supt., 508-923-2000 (Sped study)  
**HARVARD**- Dr. Thomas Jefferson, 978-456-4140 (Demography)  
**HOLYOKE**- Mr. David Dupont, Supt., 413-534-2000 (Long Range Facilities Plan-3)

**HOPKINTON-** Dr. John Phelan, Supt. retired, 508-497-9800 (Long Range Facilities Plan, Demography)  
**IPSWICH-** Mr. Richard Korb, Supt., 978-356-2935 (Long Range Facilities Plan)  
**LEOMINSTER-** Dr. William Hart, Principal, moved to Pentucket, 978-534-7715 (HS facility usage, LRSFMP)  
**MARLBOROUGH-** Mr. James Jolicoeur, (former Asst. Supt., moved to Leominster MA), 508-460-3509 (Long Range Facilities Plan)  
**MASHPEE-** Ms. Ann Bradshaw, Supt., 508-539-1500 (Capacity Study)  
**MEDFIELD-** Mr. Robert Maguire, Supt., 508-359-2302 (Demography, Student Yield Multi-Family Housing-2)  
**MIDDLEBOROUGH-** Dr. Robert Sullivan, Supt., 508-946-2000 (Long Range Facilities Plan)  
**MINUTEMAN RVTHS -** Dr. Edward Bouquillon, Supt., 781-861-6500 (Policy Book, Demography, Enrollment Capacity)  
**MONTACHUSETT TECH-** Mr. James Culkeen, Supt., 978-345-9200 (Demography)  
**NORWELL-** Mr. Matthew Keegan, Supt., 781-659-8800 (Demography, Update)  
**OLD ROCHESTER RSD-** Dr. William Cooper, (Supt., retired), 508-758-2772 (Strategic Plan)  
**PATHFINDER VOC-TECH-** Dr. Gerald Paist, Supt., 413-283-9840 (Management Review)  
**PEABODY-** Dr. Milton Burnett, Supt. 978-531-1600 (Demography)  
**PITTSFIELD-** Dr. Howard Eberwein, Supt. retired) 413-499-9502 (Capacity Study, Demography and Addendum, Vocational Study)  
**SOMERVILLE-** Mr. Anthony Pierantozzi, Supt., 617-625-6600 (Long Range Facilities Plan-2)  
**SOUTHBRIDGE-** Dr. Dale Hanley, Supt., 508-764-5414 (Demography)  
**SPENCER-EAST BROOKFIELD-** Dr. Reza Namin, Supt., 508-885-8500 (Strategic Planning)  
**SPRINGFIELD -** Mr. Tom Jenkins, 413-726-2100 (Facility Analysis w/architect)  
**SPRINGFIELD PUTNAM V-T -** Mr. Daniel Warwick, Supt. retired, 413-787-7874 (Long Range Facilities Plan)  
**TAUNTON-** Dr. Julie Hackett, Supt., 508-821-1100 (Long Range Facilities Plan)  
**WESTPORT-** Dr. Linda Galton, Supt. retired, 508-636-1137 (Demography)  
**WESTON-** Dr. Alan Oliff, Supt. retired, 781-529-8080 (Demography)  
**WINCHESTER-** Dr. James Marini, Supt. retired, 781-721-7004 (Enrollment memo)  
**WORCESTER-** Dr. James Caradonio, Supt. retired, 508-799-3116 (Demography)

### **NEW HAMPSHIRE**

**DOVER-** Dr. John O'Connor Supt., moved to Tewksbury MA), 603-516-6800 (Demographics)  
**FREMONT-** Mr. Norm Tanguay, 603-895-2511 (Long Range Facilities Plan and Update)  
**MANCHESTER-** Dr. Michael Ludwell 603-624-6300 (Supt., moved to SAU #44, 603-942-1290) (Demographics w/ architect)  
**NASHUA-** Mr. Chris Hottel (Supt., retired), 603-594-4300 (HS drop-out study, Capacity Study)  
**PINKERTON ACADEMY-** Ms. Mary Anderson, Headmaster, 603-432-2588 (Staffing Study)  
**SAU #10, DERRY-** Ms. Mary Ellen Hannon, Supt. retired, 603-432-1210 (Strategic Plan)  
**SAU #26, MERRIMACK,** Ms. Marjorie Chiafery, Supt., 603-424-6200 (Demographics)  
**SAU #28, PELHAM-** Ms. Amanda LeCaroz, Asst. Supt., 603-425-1976 (Best Use Study)  
**SAU#29, KEENE-** Mr. Wayne Woolridge, Asst. Supt., 603-357-9002 (Management Study)  
**SAU #41, HOLLIS/BROOKLINE-** Ms. Susan Hodgdon, Supt., 603-465-7118 (Sped Study, Strategic Planning)  
**SAU #78, RIVENDELL-** Ms. Noelle Vitt, Supt. retired, 603-353-2170 (Demography)

**TIMBERLANE-** Mr. Richard LaSalle, Asst. Supt., retired, 603-382-6119 (Long Range Facility Study)

### **RHODE ISLAND**

**AQUIDNECK ISLAND-** Dr. John Ambrogi , Liaison, 401-847-2100 (Newport, Middletown, Portsmouth), (Regional Planning)

**BRISTOL-WARREN-** Dr. Ed Mara, Supt. retired, 401-253-4000 (Demography)

**CENTRAL FALLS-** Dr. Frances Gallo, Supt., 401-727-7700 (LRSFMP w/architect)

**CUMBERLAND-** Dr. Donna Morelle, Supt. retired, 401-658-1600 (Best Use Study)

**E. GREENWICH-** Mr. Charles Myers, former Supt. 401-885-3300 (2 Staffing Studies, enrollment Update)

**LITTLE COMPTON-** Dr. Harold Devine, Interim Supt., 406-635-2351(Demographic w/architect)

**PORTSMOUTH-** Dr. Susan Lusi, former Supt., moved to Providence, 401-683-1039 (Facility Study, Business Office Study) 2005

**PROVIDENCE -** Dr. Melody Johnson, Supt. retired, 401-456-9100 (Demography w/ architect)

**RHODE ISLAND DOE -** Mr. Joseph Silva, Liaison, 401-222-4294 (Enrollment Projections-2)

**SMITHFIELD-** Mr. Robert O'Brien, Supt., 401-231-6606 (Demography)

**SOUTH KINGSTOWN -** Dr. Kristen Stringfellow, Supt., 401-360-1300 (Enrollment Capacity/ Realign, SPED Study)

### **VERMONT**

**BRATTLEBORO-** Dr. Ronald Stahley, Supt., 802-254-3732 (Staffing Study)

**ESSEX JUNCTION-** Dr. Michael Deweese, Supt., 802-857-7000 (Long Range Plan)

**VERMONT DEPT. OF EDUCATION-** Dr. Michael Deweese (liaison, Supt., Essex Junction VT) 802-857-7000 (Management Study)

**WINDSOR-** Ms. Brenda Needham, former Supt., moved to NELMS - 978- 557-9311, 802-674-2144 (Administrative Org)



A PARTIAL LIST OF MASSACHUSETTS DISTRICTS WITH WHICH NESDEC HAS WORKED IN DEMOGRAPHY

<b>AMHERST</b> (Demography and School Capacities)	2007	Dr. Jere Hochman (former Supt., moved to NY)	413-362-1810
<b>BEDFORD</b> (Demographic Study)	2009	Mr. David Coelho, Dir. Finance	781-275-7708
<b>CANTON</b> (Demography)	2008	Dr. John D'Auria, Supt.	781-821-5060
<b>CARLISLE</b> (Demography) (Management Study) (Management Study)	2006 2009 2010	Mr. Louis Salemy, SC Liaison	617-737-8116 (office)
<b>DANVERS</b> (Demography)	2006	Ms. Lisa Dana, Supt.	978-777-4539
<b>FRAMINGHAM</b> (Demography) (Best Use Study) (Demography)	2005 2012 2012	Dr. Edward Gotgart, Bs. Mgr.	508-626-9117
<b>HARVARD</b> (Demography)	2010	Dr. Thomas Jefferson (former Supt., moved to Lynnfield MA)	978-456-4140
<b>HOPKINTON</b> (Long Range Facilities Plan and Demography)	1995, 2000, 2005	Dr. John Phelan (Supt., retired)	508-497-9800
<b>MARLBOROUGH</b> (Long Range Facilities Plan)	2006	Mr. James Jolicoeur (former Asst. Supt., moved to Leominster MA)	508-460-3509
<b>MEDFIELD</b> (Demography) (Student Yield Multi-Family Housing) (Student Yield Multi-Family Housing)	2003 2010 2012	Mr. Robert Maguire, Supt.	508-359-2302
<b>MONTACHUSETT TECH</b> (Demography)	2006	Mr. James Culkeen, Supt.	978-345-9200
<b>NORWELL</b> (Demography) (Update)	2007 2008	Mr. Matthew Keegan, Supt.	781-659-8800

**Environmental and Site/Civil Engineering**

**Fuss & O'Neill EnviroScience, LLC**

## King Philip Middle School

West Hartford, CT

**Fuss & O'Neill  
EnviroScience was retained  
by Town of West Hartford to  
conduct hazardous materials  
NESHAP inspections  
prior to ADA compliance  
renovation of King Philip  
Middle School.**



The inspection included reviewing past AHERA reports and bulk sample results, inspection of suspect asbestos containing materials, a screening for lead based paint, mercury and PCBs in lighting fixtures and building materials.

EnviroScience also developed remediation specifications and plans for bidding purposes. A separate specification was prepared for the abatement of PCBs in building materials. EnviroScience represented the client in pre-bid conference with the contractors and in PCT meeting at the Bureau of School Facilities. EnviroScience prepared variance/waiver applications, as required, for abatement to take place.

Project monitoring services include insuring the abatement contractor complies with state and federal regulations, performing air testing requirements and visual inspections of work areas. EnviroScience is responsible for performing final punch list inspections after the abatement work is complete.

Assisted the owner/architect for the Bureau of School Facilities meeting and pre-bid conference. Worked second shift hours in order to complete work while the building was unoccupied by students and faculty.

## Francis T. Maloney High School

Meriden, CT

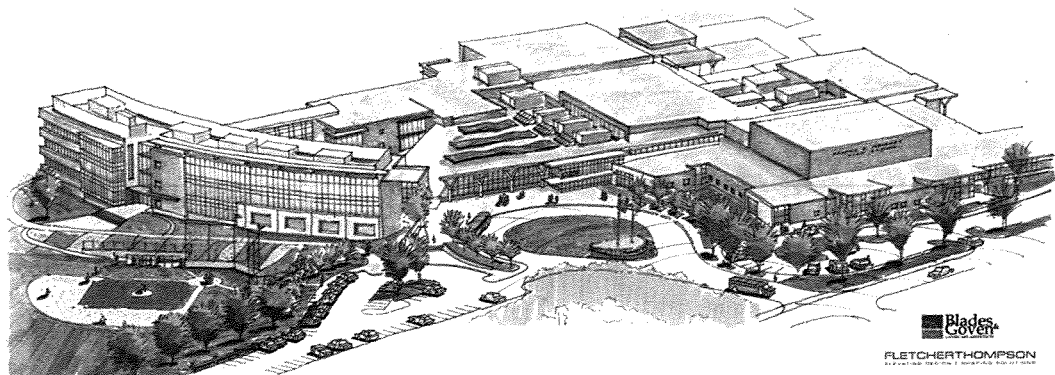


**Fuss & O'Neill  
EnviroScience, LLC  
(EnviroScience) worked  
with the project architect  
to conduct testing for  
hazardous building materials  
and develop technical  
specifications for removal.**

Building improvements will include partial demolition of the circa 1958 portion of the building and a new addition to the remaining original structure. The remaining portion of the structure will also be renovated. The renovation improvements will create more classroom space and offices for an operational capacity of 1,450 (based on the commonly accepted utilization factor of 85%), upgrade existing building function, and provide a technologically updated high school facility.

Hazardous materials testing was conducted to properly characterize the various building materials that would be impacted by the proposed partial demolition and renovation work at the site. Testing included lead paint, asbestos and PCBs. EnviroScience worked closely with the project architect and project team of engineers to assess the building and site for potential areas of environmental concern. We prepared a report of our findings and developed technical specifications for the removal of identified hazardous and/or regulated materials. Upon project commencement we will conduct oversight and management services at the site.

The Francis T. Maloney High School was originally constructed between 1957 and 1958, with substantial additions in 1970. In an effort to project itself appropriately into the 21st century and attract people to Meriden, the City is upgrading the existing 240,000 square foot building.



**Blades  
Govern**  
FLETCHER THOMPSON

EnviroScience  
Hazardous Materials

## Conard High School

West Hartford, CT



**Fuss & O'Neill  
EnviroScience was retained  
by Town of West Hartford  
to conduct hazardous  
materials NESHAP  
inspections prior to ADA  
compliance renovation of  
Conard High School.**

The inspection included reviewing past AHERA reports and bulk sample results, inspection of suspect asbestos containing materials, a screening for lead based paint, mercury and PCBs in lighting fixtures and in building materials. EnviroScience also developed remediation specifications and plans for bidding purposes. A separate specification was prepared for the abatement of PCBs in building materials. EnviroScience represented the client in the pre-bid conference with the contractors and the PCT meeting at the Bureau of School Facilities. EnviroScience prepared variance/waiver applications, as required, for abatement to take place.

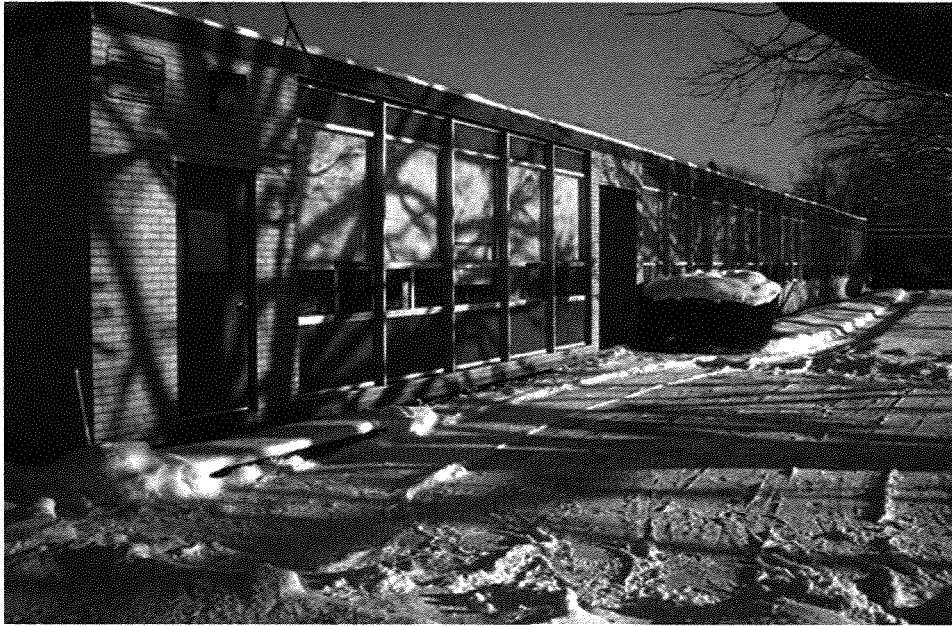
Project monitoring services included insuring the abatement contractor complies with state and federal regulations, performing air testing requirements and visual inspections of work areas. EnviroScience was responsible for performing final punch list inspections after the abatement work is complete.

Assisted the owner/architect for the Bureau of School Facilities meeting and pre-bid conference. Worked second shift hours in order to complete work while the building was unoccupied by students and faculty.

Hazardous Materials

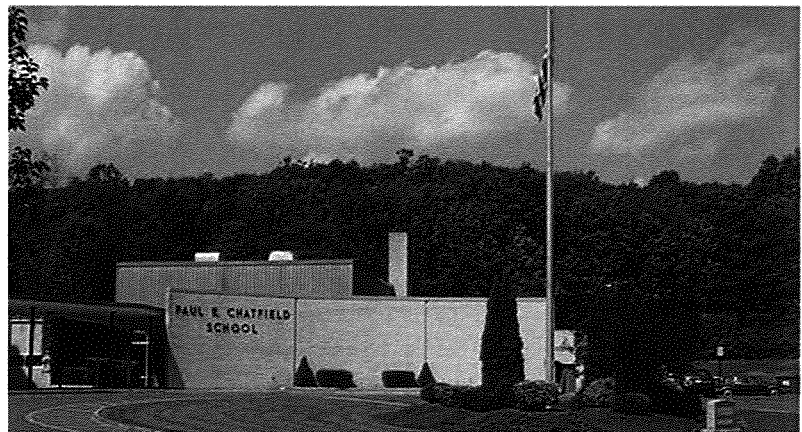
## Chatfield Elementary School PCB Testing & Abatement Planning

Seymour, CT



**Fuss & O'Neill**  
EnviroScience, LLC was contracted to assist in the development of remediation project for Polychlorinated Biphenyls (PCBs) at Chatfield Elementary School in Seymour, Connecticut.

The project involved conducting additional testing of substrates and surfaces adjacent to caulking determined to contain PCBs in concentrations greater than 50 parts per million. Fuss & O'Neill EnviroScience developed a self-implementing, on-site clean-up and disposal plan for submission to the New England Region 1 office of the EPA. Our team also developed detailed technical specifications for major renovations of the school to occur from Summer 2010 to 2011. Additionally, testing of indoor air quality and wipe sampling was performed inside the school.



This project included phased construction, funded by the state with BSF review. EPA plan approval was required, and risk assessment screening of the interior involving air and wipe sampling for PCBs.

EnviroScience  
Hazardous Materials

**Landscape Architecture**

**Blades + Goven, LLC**

---

## **EDUCATIONAL PROJECTS**

### *Elementary Schools*

***New K-8 Elementary School***

Westover Magnet School  
Stamford, Connecticut

***Additions & Code Updates***

Chapel Street Elementary School  
Stratford, Connecticut

***Additions & Code Updates***

Columbus Elementary School  
Yonkers, New York

***Additions & Renovations***

Osborne Elementary School  
Rye, New York

***Additions & Code Updates***

East, West & South Schools  
New Canaan, Connecticut

***Additions & Code Updates***

Old Greenwich Elementary School  
Greenwich, Connecticut

***New K-8 Elementary School***

Westside Elementary School  
Bridgeport, Connecticut

***New Grade K-5 Elementary School***

Frenchtown Road  
Trumbull, Connecticut

***Site Improvements***

Hurlbutt Elementary School  
Weston, Connecticut

***New Grade 3-5 Elementary School***

Weston Schools Campus  
Weston, Connecticut

***Site Improvements***

Isadore Wexler School  
New Haven, Connecticut

***Additions & Code Updates***

Coleytown Elementary School  
Westport, Connecticut



***Additions & Code Updates***

Kings Highway Elementary School  
Westport, Connecticut

***Additions & Renovations***

Yalesville Elementary School  
Wallingford, Connecticut

---

### *Middle Schools*

***New Middle School***

Six to Six Magnet School  
Bridgeport, Connecticut

***Additions & Code Updates***

Rochambeau Middle School  
Southbury, Connecticut

***Additions & Code Updates***

Memorial Middle School  
Middlebury, Connecticut

***Site Improvements***

Weston Middle School  
Weston, Connecticut

***Additions & Code Updates***

Fairfield Woods Middle School  
Fairfield, Connecticut

***Additions & Code Updates***

Dag Hammarskjold Middle School  
Wallingford, Connecticut

***Additions & Code Updates***

James Moran Middle School  
Wallingford, Connecticut

***Site Improvements***

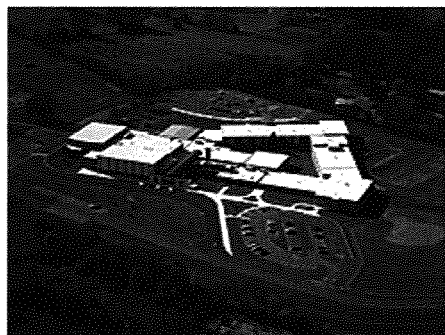
Bennie Dover Jackson Middle School  
New London, Connecticut

***Additions & Code Updates***

Middlebrook Middle School  
Wilton, Connecticut

***Site Improvements***

Sara Noble Middle School  
New Milford, Connecticut





## EDUCATIONAL PROJECTS

### High Schools

#### *Site Improvements & Additions*

Pomperaug High School  
Southbury, Connecticut

#### *Site Improvements & Additions*

Brien McMahon High School  
Norwalk, Connecticut

#### *Feasibility Study*

Killingly High School  
Killingly, Connecticut

#### *Site Master Plan*

St. Joseph High School  
Trumbull, Connecticut

#### *Site Master Plan Studies*

Stonington High School  
Stonington, Connecticut

#### *Site Improvements & Additions*

Weston High School  
Weston, Connecticut

#### *Feasibility Study*

Fairfield High School Expansion  
Fairfield, Connecticut

#### *Site Improvements & Additions*

Fairfield Preparatory School  
Fairfield, Connecticut

#### *New High School*

New Milford High School  
New Milford, Connecticut

#### *Additions & Code Update*

East Lyme High School  
East Lyme, Connecticut

#### *Site Improvements & Additions*

Wilton High School  
Wilton, Connecticut

#### *Site Evaluation & Feasibility Study*

Derby High School  
Derby, Connecticut



#### *Site Improvements & Additions*

Wamogo High School  
Litchfield, Connecticut

#### *Feasibility Study*

Litchfield High School / Middle School  
Litchfield, Connecticut

### Higher Education

#### *New Residence Hall*

Adelphi University  
Garden City, New York

#### *Walsh Athletic Center*

Fairfield University  
Fairfield, Connecticut

#### *North Campus Master Plan*

Fairfield University  
Fairfield, Connecticut

#### *Quick Center for the Arts*

Fairfield University  
Fairfield, Connecticut

#### *New Residence Halls*

University of New Haven  
New Haven, Connecticut

#### *Central Campus Mall*

Fairfield University  
Fairfield, Connecticut

#### *Chapel and Campus Ministry*

Fairfield University  
Fairfield, Connecticut

#### *University Housing*

Fairfield University  
Fairfield, Connecticut

#### *Residence Hall*

Coast Guard Academy  
New London, Connecticut

#### *New Baseball Complex*

Adelphi University  
Garden City, New York



## GOVERNMENTAL PROJECTS

---

### *Site Master Plan*

O'Neill Federal Building  
Boston, Massachusetts

### *Site Master Plan*

Merchant Marines  
Kings Point, New York

### *New Residence Hall*

Coast Guard Academy  
New London, Connecticut

### *New Residence Hall*

Camp Rowland  
Old Lyme, Connecticut

### *New Officers Lodge*

Camp Rowland  
Old Lyme, Connecticut

### *New Training Facility*

New Haven Post Office  
New Haven, Connecticut

### *Additions & Renovations*

Hanscom Air Force Base  
Hanscom AFB, Massachusetts

### *Site Master Plan*

King Industries  
Norwalk, Connecticut

### *New General Mail Facility*

Naugatuck Post Office  
Naugatuck, Connecticut

### *New Carrier Annex*

Springdale Post Office  
Stamford, Connecticut

### *New Retail Facility*

New Haven Post Office  
New Haven, Connecticut

### *New Maintenance Facility*

West Haven VMF  
West Haven, Connecticut



## MUNICIPAL PROJECTS

---

### *Dixwell Streetscape Study*

Hope VI Demonstration Project  
New Haven, Connecticut

### *New City Park*

Lafayette Park  
Bridgeport, Connecticut

### *New City Park*

Russo Park  
Bridgeport, Connecticut

### *New City Park*

Eisenhower Park  
Bridgeport, Connecticut

### *New City Park*

Bulls' Head Park  
Bridgeport, Connecticut

### *New City Park*

Majestic / Palace Park  
Bridgeport, Connecticut

### *New City Park*

Kiwanis Park  
Stamford, Connecticut

### *New City Park*

Stratfield Park  
Bridgeport, Connecticut

### *New City Park*

Millennium Park  
Bridgeport, Connecticut

### *Streetscape Improvements*

Main / Congress Streetscape  
Bridgeport, Connecticut



## RECREATIONAL PROJECTS

### *Additions to Athletic Center*

Fairfield University  
Fairfield, Connecticut

### *Artificial Turf Field*

Wakeman Boys & Girls Club  
Fairfield, Connecticut

### *New Athletic Fields*

East Lyme High School  
East Lyme, Connecticut

### *New Athletic Field Complex*

New Milford High School  
New Milford, Connecticut

### *Athletic Field Master Plan*

Weston Schools Campus  
Weston, Connecticut

### *Pool & Gymnasium Addition*

Greenwich YMCA  
Greenwich, Connecticut

### *Athletic Field Feasibility Study*

Town of Redding  
Redding, Connecticut

### *New Athletic Fields*

Thompson Schools  
Thompson, Connecticut

### *New Athletic Fields*

Sterling Community School  
Oneco, Connecticut

### *New Soccer Field*

Wamogo High School  
Litchfield, Connecticut

### *Track & Artificial Turf Field*

Simsbury High School  
Simsbury, Connecticut

### *Track & Artificial Turf Field*

Pomperaug High School  
Southbury, Connecticut

### *Athletic Field Master Plan*

St. Joseph High School  
Trumbull, Connecticut

### *Athletic Field Master Plan*

Stonington High School  
Stonington, Connecticut

### *Nature's Playground*

Stamford Museum & Nature Center  
Stamford, Connecticut

### *Renovations of Hecksher Farm*

Stamford Museum & Nature Center  
Stamford, Connecticut

### *New Athletic Fields*

Brien McMahon High School  
Norwalk, Connecticut

### *Site Improvements*

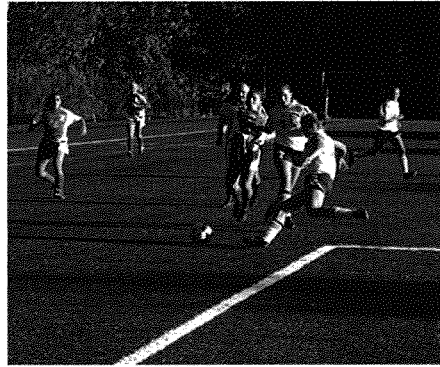
Weston Field Club  
Weston, Connecticut

### *New Athletic Fields / Play Areas*

Cesar Batalla School  
Bridgeport, Connecticut

### *New Athletic Fields*

Westover Elementary School  
Stamford, Connecticut



**Vertical Transportation**

**AB Consulting**

## Recent Project Profile:

1. Project: Gouverneur Healthcare Services Modernization – Manhattan, NY.

Client: Dormitory Authority of State of New York, New York.

Architect: Hillier Architecture, New York.

Project work:

We are a team member with Architect for the project, providing sub-consultant engineering services for Vertical Transportation system. This project has combination of new building and renovation of the existing building. The new building addition of six floors will provide approximate 75,000 square feet area for Ambulatory and Nursing services, Out-patient Clinic services and Parking area. The addition of the facility will be provided with two new passenger elevators.

The existing facility of 13 floors is provided with eight (8) elevators. These existing elevators originally installed over thirty years will be modernized to match the new elevator technology in compliance with current code and safety and security requirements.

Our consulting engineering services include traffic analysis for vertical transportation system in the new building. For rehabilitation of elevators in the existing facility building, visit jobsite to survey and review existing condition of elevator system, evaluate elevator components, identify and address code requirements to meet safety and security of the elevator system, traffic study to analyze the building transportation need in timely manner, establish scope of work for rehabilitation of eight elevators, Provide services of preparing engineering contract documents of drawings and contract documents, bid services of analyzing, evaluating bid and recommending the contractor for the project. Provide construction support services of reviewing shop drawings, evaluating & approving change order, attending project meeting, construction inspection and preparing report, preparing punch list and reviewing final closing documents.

Project starting date: August 2006.

Project completion date: September 2010.

2. Project: Fulton Street Transit Center, Manhattan, NY.

Client: Arup Engineers for NYC Transit Authority.

Project

Work: Provide design, consulting and engineering services for Vertical Transportation system of new Transit Center development and connecting five busy sub lines with Transit Center to create major hub for transfer. The project is estimated to provide with seventeen (17) passenger elevators and twelve (12) escalators. All Vertical Transportation system devices require to be installed in constrain space, limited overhead room and with various structural and utility design limitations requiring special design requirements and watchful coordination with all trades.

Project starting date: July 2005.

Project design completion date: August 2011.

3. Project: Battery Park City School, Manhattan, NY.

Client: Dattner Architects for New York City School Construction Authority.

Project: Provide design and construction support services of providing three new passenger elevators and a wheel chair lift under in a new nine story school facility designed for student from pre-K to 12<sup>th</sup> grade and special education student including handicap student and diversified activities.

Project starting date: June 2007.

Project design completion date: October 2008.

4. Project: Rehabilitation of Nine Stations, West End Project, Brooklyn, NY.

Client: Urbahn Architects for NYC Transit Authority.

**Project**

Work: Provide design and construction support services for three new passenger elevators. These elevators will be installed in the existing train station with many constraints and require special design consideration.

Project starting date: July 2007.

Project design completion date: September 2011.

5. Project: New Settlement School, Bronx, NY.

Client: Dattner Architects for New York City School Construction Authority.

Project: Provide design and construction support services for providing two new passenger elevators in a school part of the facility and a passenger elevator in community center, the part of the school facility.

Project starting date: July 2007.

Project design completion date: November 2008.

6. Project: PS 79X, Brooklyn, NY.

Client: Dattner Architects for New York City School Construction Authority.

Project: Provide design and construction support services for providing two new passenger elevators and a wheel chair lift under upgrade of the school building to comply with ADA code requirements.

Project starting date: May 2007.

Project design completion date: April 2008.

7. Project: TBTA – Project 59; Conversion/Alteration of OMH Recreation Facility for TBTA Offices

Client: Team member with Urbahn Architects for MTA Bridges and Tunnels.

**Project**  
**Work:** Provide design and construction support services for vertical transportation system rehabilitation and conversion of OHM facility into TBTA office building.

**Project starting date:** June 2005.

**Project design completion date:** April 2006.

8. **Project:** JHS 162K, Brooklyn, NY.

**Client:** EI Associates for New York City School Construction Authority.

**Project:** Provide design and construction support services for providing new elevators and wheel chair lift under upgrade of the school building to comply with ADA code requirements. The existing school is not provided with elevators and does not comply with ADA requirements.

**Project starting date:** October 2006.

**Project design completion date:** January 2007.

9. **Project:** PS 110K, Brooklyn, NY.

**Client:** Urbahn Associates for New York City School Construction Authority.

**Project:** Provide design and construction support services for providing new elevators and wheel chair lift under upgrade of the school building to comply with ADA code requirements. The existing school is not provided with elevators and does not comply with ADA requirements.

**Project starting date:** September 2006.

**Project design completion date:** January 2007.

10. **Project:** IS 166K, Brooklyn, NY.

**Client:** Urbahn Associates for New York City School Construction Authority.



Project: Provide design and construction support services for providing new elevators and wheel chair lift under upgrade of the school building to comply with ADA code requirements. The existing school is not provided with elevators and does not comply with ADA requirements.

Project starting date: September 2006.

Project design completion date: January 2007.

11. Project: Thomas Edison High School, Queens, NY.

Client: EI Associates for New York City School Construction Authority.

Project: Provide design and construction support services for rehabilitation of one existing passenger elevator. The existing elevator was originally installed approximately thirty-five (35) years ago. The elevator was provided some upgrade in 1987. The existing elevator provided with relay-logic type controller device will be replaced with new solid state type microprocessor controller, cab, fixtures, hoist machine, landing device, limit switches, hoist & governor wire rope, cab operator, and associated security and safety requirements.

Project starting date: June 2004.

Project design completion date: January 2005.

12. Project: 96th Street Train Station Rehabilitation, Manhattan, NY.

Client: Urbahn Architects for NYC Transit Authority.

Project Work: Provide design and construction support services for two new passenger elevators. These elevators will be installed in the existing train station with many constrains and require special design consideration.

Project starting date: July 2003.

Project design completion date: August 2009.

13. Project: Bayard Rustin Humanities High School, Manhattan, NY.
- Client: di Dominico + Partners for New York City School Construction Authority.
- Project: Provide design and construction support services for rehabilitation of four existing passenger elevators. The existing manual passenger elevators with old relay logic controller device will be replaced with new automatic passenger elevators with automatic door operation and solid state microprocessor controller, cab fixtures etc.

Project starting date: June 2004.

Project design completion date: January 2005.

14. Project: Highbridge Postal Station, Bronx, NY.
- Client: O'Dea Lynch Abbittista Consulting Engineers for United States Postal Service.
- Project Work: Provide design and construction support services for rehabilitation of a freight hydraulic elevator and a new material lift in the existing postal station.

Project starting date: June 2004.

Project design completion date: October 2004.

15. Project: SUNY College of Optometry – New Residence Hall, New York, NY.
- Client: David Smotrich & Partners LLP for Dormitory Authority of New York.
- Project Work: Provide design and construction support services for vertical transportation system in new 25 million dollar construction budgeted 20 stories residential dormitory building.

Project starting date: April 2005.

Project design completion date: December 2006.

**Security, Technology and Telecommunications**

**D'Agostino & Associates, LLC**

**Relevant project experience**

Date: March, 2011

**Torrington BOE**

Torrington, CT

Performed a technology study for several elementary and high schools within this district. This technology study included analysis and recommendations for the communication cabling infrastructure, network electronics, audio/visual, interactive whiteboards and security systems.

**Cesar A. Batalla Elementary**

Bridgeport, CT

Designed: Cabling infrastructure, active electronics (LAN & WAN), wireless network, VoIP phone system. Access controlled & video surveillance systems. Interactive whiteboards, projectors & sound systems. Master Clock & PA system. Computers & printers.

TOTAL COST OF TECHNOLOGY SYSTEMS: \$2,400,000

**Newtown High School**

Newtown, CT

Designed: Cabling infrastructure, active electronics, wireless network, VoIP phone system. Intrusion detection, access controlled & video surveillance systems. Interactive whiteboards, projectors & sound systems. Computers, printers & electronic MIDI devices.

TOTAL COST OF ABOVE TECHNOLOGY SYSTEMS: \$900,000

**Killingly High School**

Dayville, CT

Designed: Cabling infrastructure, active electronics, wireless network, VoIP phone system. Intrusion detection, access controlled & video surveillance systems. Interactive whiteboards, projectors & sound systems. Digital Signage & Video over IP and electronic MIDI devices.

TOTAL COST OF TECHNOLOGY SYSTEMS: \$1,400,000

**Thruood Marshall Elem School**

(6-6 Magnet) Bridgeport, CT

Designed: Cabling infrastructure, active electronics & Servers. PBX phone system. Interactive whiteboards, projectors & sound systems. Computers & printers.

TOTAL COST OF ABOVE TECHNOLOGY SYSTEMS: \$500,000

*"D'Agostino & Associates is a vendor independent Technology Engineering company that specifically does not provide installation services and does not sell hardware or software products. We believe that only by maintaining this strict business model of vendor neutrality can we provide our clients the best value and Return on Investment for their engineering dollars".*

*Being fully independent allows D'Agostino & Associates the flexibility to design systems that are technically and economically in the best interest of our clients.*

## COMPANY PROFILE

### Municipality Clients

D'Agostino & Associates (DA) is a premier technology and security design & consulting company. Years of research, practice, and field experience gives us the edge at anticipating the direction and development of new technologies. Our design professionals specialize in assessing our clients needs to implement cost efficient and practical strategies.

The following is a partial list of Municipality Clients:

- Town of New Canaan; DA is and has been working as technology/security consultant for the town of New Canaan for more than 12 years.
- City of East Hartford; DA has performed a video surveillance security audit, design and construction management services for the middle schools and High Schools within this City
- Town of Wilton; DA has performed a wireless survey, design and Construction Management services for several town wide facilities



Marc J. D'Agostino  
CEO / Owner

*D'Agostino & Associates is a vendor neutral Technology & Security Engineering company that specifically does not provide installation services and does not sell hardware or software products. We believe that maintaining this strict business model of vendor neutrality we can provide our clients the best value and return on investment for their engineering dollars. Being fully independent allows D'Agostino & Associates the flexibility to design systems that are technically and economically in the best interest of our clients.*

**D'AGOSTINO & ASSOCIATES**

**Cost Estimating**

**Leach Consulting Company, LLC**

# School Projects

# LEACH

Project Name	Town/City	Budget	Client	Contact	Completed
Annie Fisher Magnet School	Hartford, CT	29,000,000	Amenta/Emma	Bob Emma	Oct-07
Griswold Public Schools (Elem/Middle)	Griswold	35,000,000	Kaestle-Boos Associates	Charles Boos	May-08
Norwich Free Academy, Master Planning	Norwich, CT	30,000,000	DuBose Associates	Marco Tomassini	Oct-07
Pomfret Pre-K thru 8 School	Pomfret, CT	31,000,000	Kaestle-Boos Associates	Scott Mangiali	Mar-07
Region No. 14 Public Schools (3)	Woodbury	40,000,000	Kaestle-Boos Associates	Dave King	On-Going
Region No. 18 High School	Lyme/Old Lyme	55,000,000	Region No. 18 S.D.	John Rhodes	Oct-08
Shepaug Valley Regional 12-3 Schools	Roxbury, CT	30,000,000	C.R.E.C.	Gus Penna	Jan-09
Stafford Public Schools	Stafford, CT	2,092,850	Kaestle-Boos Associates	Dave King	Mar-07
Watertown Public Schools (3)	Watertown	75,000,000	Kaestle-Boos Associates	Dave King	Jul-08
West Middle School	Hartford, CT	1,270,000	DuBose Associates	Harvey Liebin	Nov-08
Williams School - Cafeteria	New London, CT	1,133,000	DuBose Associates	Marco Tomassini	Mar-08
Public Safety Academy	Hartford, CT	69,400,000	C.R.E.C.	Gus Penna	Apr-07
Pathways to Technology Magnet School	Hartford, CT	26,000,000	Amenta/Emma	Bob Emma	Jun-08
Kinsella Magnet School of Arts	Hartford, CT	27,590,000	Diggs Construction	John Mena	May-07
Kinsella Magnet School of Arts, Richard J.	Hartford	26,000,000	Fletcher Thompson	Kurt Bauer	Oct-07
Mary M. Hooker Enviro Studies Magnet	Hartford	29,000,000	BL Companies	Scott Pellman	Mar-09
Chaffee Hall, Loomis Institute	Windsor, CT	11,500,000	Loomis Chafee Inst	Lou Cherichetti	Jun-08
Clark Science Center, Loomis Institute	Windsor	13,000,000	Loomis Chafee Institute	Lou Cherichetti	Aug-08
Davis Street Arts Magnet School - SD Phase	New Haven, CT	30,000,000	BL Companies	Chris Roof	Oct-07
Diloretto Magnet School	Hartford, CT	35,000,000	DuBose Associates	Harvey Liebin	Sep-08
Bridgeport Multi-Magnet High School	Bridgeport, CT	90,000,000	O & G Industries	Robert Hedman	Feb-09
Discovery Magnet School	Bridgeport, CT	28,450,000	O & G Industries	Aaron Mednick	Jan-07
Arts Academy High School	Hartford, CT	28,000,000	C.R.E.C.	Gus Penna	Jun-07
Bulkley High School	Hartford, CT	450,000	DuBose Associates	Ernie Nepomuceno	Oct-09
Ponagaset High School	Rhode Island	25,000,000	H.V. Collins	Bob Gzryb	Jun-06
J. C. Wilcox Vocational HS - DPW	Meriden, CT	35,000,000	Pike Construction	Randall Luther	Mar-08
Kingswood Oxford	West Hartford, CT	12,500,000	Tai Soo Kim Architects	Whit Iglehart	Jun-06
Monadnock Regional High School	East Swanzey, NH	52,000,000	Kaestle-Boos Associates	Dave King	Oct-09
New Britain High School	New Britain, CT	10,000,000	Kaestle-Boos Associates	Dave King	Jun-07
Newtown High School	Newtown, CT	34,000,000	Fletcher Thompson	Joe Costa	Nov-07
Oberlin College - Resid Master Planning	Oberlin, OH	153,000,000	Herbert S. Newman	Arch Currie	Jun-07
Suffield Academy - Brewster Hall	Suffield, CT	12,000,000	Tai Soo Kim Architects	Whit Iglehart	Mar-07
West Haven High School	West Haven, CT	90,000,000	C.R.E.C.		
East Granby Elementary School	East Granby, CT	15,000,000	Moser Pilon Nelson	Hugh Pearson	
Choate Rosemary Hall:	Wallingford, CT				
Mellon Art Gallery			IM Pei		1971
Rosemary Hall			James Stewart		1971
Hillhouse Portico Renovation		775,500	edm	Tim Eagles	Est. 2/11
St. John's Hall Renovation		7,035,000	edm	Tim Eagles	Est. 8/11





## D. References



**Southington Public Schools**  
Mr. Edward Pocock  
Building Committee Chairman  
860-518-6677

**Shelton Public Schools**  
Mr. Anthony Simonetti  
Building Committee Chairman  
203-734-3393

**City of Milford**  
Mr. Silvestre Moura, III  
Building Maintenance Superintendent  
203-783-3265



**VII. AFFIDAVITS AND FEE PROPOSAL FORM**

**NON-COLLUSIVE / NON-CONFLICT AFFIDAVIT OF RESPONDENTS**

FOR: RFQ #2-2013-FACILITIES CONDITION ASSESSMENT

The undersigned Respondent, having fully informed themselves regarding the accuracy of the statements made herein certifies that;

1. The statement of qualifications has been submitted without collusion with, and without any agreement, understanding, or planned common course of action with any other respondent designed to limit independent responses or competition, and
2. If the undersigned is one of the Respondents selected to be interviewed and to submit a written proposal, the contents of such proposal will not be communicated by the Respondent and its employees or agents to any person not an employee or agent of the respondent prior to submission to the ADFC.
3. No Selectman, ADFC member or other employee or person whose salary is payable in whole or in part from the Town of Monroe OR Board of Education, nor any immediate family member thereof, is directly or indirectly interested in the Bid/Proposal, or in the supplies, materials, equipment, work or labor to which it relates, or in any profits thereof.
4. He/she has read the Monroe Code of Ethics set forth in the Town Code, which is accessible on the Town website and he/she agrees for himself/herself and on behalf of the company/LLC to comply with the same.

The undersigned further certifies that this statement is executed for the purpose of inducing the Town of Monroe to consider the statement of qualifications submitted herein.

Legal Name of Respondent: Daniel L. Casinelli

Business Name: Fletcher-Thompson, Inc.  
 Business Address: Three Corporate Drive, Suite 500  
Shelton, CT 06484

Daniel Casinelli, Principal  
 Signature and Title of Person

State of Connecticut S.S. County of Fairfield

Subscribed and sworn before me this 26th day of March, 2013.

Constance Koch My Commission Expires 11/30/2013  
 Notary Public Date

CONSTANCE KOCH  
 NOTARY PUBLIC  
 My Commission Expires 11/30/2013

**AFFIRMATIVE ACTION STATEMENT**

- 1 of 4 pages -

REQUIREMENT: Any bidder or respondent to an RFQ seeking to do business with the Town of Monroe must upon request supply the Town with any information concerning the Affirmative Action/Equal Employment Practices of the respondent/bidder. Failure to supply such information, when requested, will result in the termination of any further transactions between the respondent/bidder and the Town of Monroe.

Note: All respondent/bidders with more than ten (10) employees shall be required to complete the Affirmative Action/Equal Opportunity Employment Requirements Statement on an annual basis, except as note below:

All respondents or bidders with less than ten (10) employees are exempt from this requirement;

All respondents/bidders that have completed this form within the last year;

If either of the above applies, please indicate the:

100 number of employees  
completed this form within one year  
 Yes  No

Date completed: April 26, 2012

FOR SEALED BIDS AND RFQS: All bidders submitting a sealed bid and all respondents to RFQs will be required to complete the Affirmative Action Statement. If the form has been completed in the past year, please include a copy of the initial form included with your bid. If significant changes have taken place in the past year, please update the changes on this form.

COMPANY ADDRESS: Three Corporate Drive, Suite 500  
Shelton, CT 06484

BUSINESS: Fletcher-Thompson, Inc.

Type of Organization:  
(Please check)  Corporation  Partnership  Individual

**AFFIRMATIVE ACTION STATEMENT**

- 2 of 4 pages -

If respondent/bidder filing this application is not the above named company, please provide the name, address, telephone and fax numbers of the reporting unit, branch agent, and representative.

**EQUAL EMPLOYMENT OPPORTUNITY:**

The respondent/bidder is instructed to complete the following:

Does the company have a written policy statement regarding equal employment opportunity?

Yes  No

(If yes, attach a copy)

In recruiting employees are all sources of recruitment notified that all qualified applicants will receive equitable consideration?

Yes  No

If yes, provide brief description of what methods were employed:

Equal opportunity and equal consideration is given to all applicants and employees in personnel actions including among others: advertising, recruitment, hiring and employment, upgrading, promotions, demotions and transfers, lay-offs, terminations and rehires, rates of pay, benefits, and other compensation, and selection for training.

3. Do all recruitment advertisements state that you are an Equal Opportunity Employer?

Yes  No

4. Please list by name and contact person, any local community agency or other group providing minority and female placement service, which you have contacted in the last twelve (12) months. If none, please state:

None.  
\_\_\_\_\_  
\_\_\_\_\_  
\_\_\_\_\_

**AFFIRMATIVE ACTION STATEMENT**

- 3 of 4 pages -

If additional means are employed to advertise or solicit minority and female applicants for employment opportunities within your company, please indicate:

Fletcher Thompson posts opportunities on websites such as Monster, Career Builder, and

Craig's List which disburses career advertisements throughout various diversity websites.

**AFFIRMATIVE ACTION:**

Does your company maintain a written Affirmative Action Plan for the employment of females and minorities?

[ X ]Yes [ ]No

(If yes, attach a copy)

Please indicate the name and address of the company official(s) responsible for carrying out the Equal Opportunity/Affirmative Action Program for your company:

Mrs. Constance Koch

Three Corporate Drive, Suite 500

Shelton, CT 06484

8. If a written Affirmative Action for your company is not in place, please estimate the number of vacancies expected during the next twelve (12) months and indicate the numerical or percentage goals you have set for employment of minority people and females to make your labor force reflective of the labor market in which you operate.

N/A

The vendor is hereby notified that failure to complete the above form in a satisfactory manner will preclude such vendor from being actively considered to contract with the Town of Monroe. The vendor is further advised the Affirmative Action Statement included with the bid document will become part of the contract and that any breach of such statements will constitute a breach of contract subject to such remedies as provided by law.

**AFFIRMATIVE ACTION STATEMENT**

- 4 of 4 pages -

I certify that there are no misrepresentations, omissions or falsifications in the foregoing statements and answers and that all entries above are true, complete and correct, to the best of my knowledge and belief.

03/26/13 *David Cannelli* Principal  
Date Signature of Agent Title

Subscribed and sworn before me at Three Corporate Drive, Shelton, CT,

County of Fairfield, Connecticut,

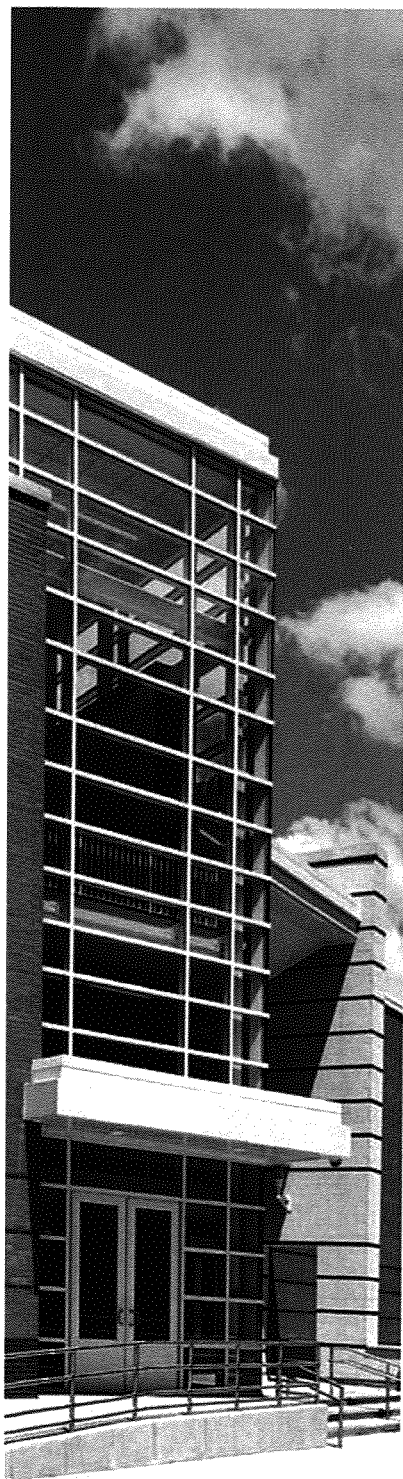
This 26th day of March, 2013.

*Constance Koch*  
Notary Public

My commission expires: 11/30/2013  
Date

CONSTANCE KOCH  
NOTARY PUBLIC  
My Commission Expires 11/30/2013

## EEO Statement



It is the policy of Fletcher Thompson to provide equal employment opportunity without regard to race, color, creed, sex, national origin, physical disability or blindness, ancestry, marital status, religious beliefs, criminal record, age or mental disorder.

This policy applies to all areas of employment, including recruitment, hiring, training and development, promotion, termination, layoff, compensation, and all other conditions and privileges of employment in accordance with applicable federal, state and local laws. It is also the policy of Fletcher Thompson to treat all employees with respect and dignity, and to provide an environment free of harassment.

Our employee classification and evaluation systems are designed to further the principle of equal employment opportunity. We base our decisions solely on the performance, skills, and potential of the employee.

Our firm is fully committed to this concept and we expect our employees to share our commitment to the principles of equal employment opportunity. Any employee involved in discriminatory practices is subject to discharge.



**AFFIRMATIVE ACTION/EQUAL EMPLOYMENT OPPORTUNITY POLICY**

**SECTION I - AFFIRMATIVE ACTION STATEMENT**

It has been and remains the policy of Fletcher-Thompson, Inc. to provide equal employment opportunity and not to discriminate against any employee or applicant for employment on account of race, color, religious creed, sex, national origin, citizenship status, learning disability or physical disability, including but not limited to blindness, ancestry, sexual orientation, marital status, religious beliefs, age or present or past history of mental disorder, mental retardation, except where any of the above is a bona fide occupational disqualification. Fletcher-Thompson, Inc. has taken, and will continue to take, affirmative action to ensure that applicants are recruited and employed and that employees are treated fairly during employment without regard to race, color, creed, sex, national origin, citizenship status, physical disability or blindness, ancestry, marital status, religious beliefs, veterans, age, sexual orientation, learning disability, or mental disorder.

Equal opportunity and equal consideration will be given to all applicants and employees in personnel actions including among others: advertising, recruitment, hiring and employment; upgrading, promotions, demotions and transfers; lay-offs, terminations and rehires; rates of pay, benefits, and other compensation; and selection for training.

No person will be discriminated against or be denied the benefits of any activity, program or employment process receiving public funds, in whole or in part resulting from State of Connecticut awarded contracts.

It remains the intention of Fletcher-Thompson, Inc. to provide full employment opportunities for members of minority groups including:

1. Blacks
2. Hispanics
3. Asian Americans
4. American Indians
5. Women
6. Disabled Persons
7. Veterans

and to make good faith efforts to employ representative numbers at all job levels through aggressive recruitment and upgrading actions. It is also the firm's policy to coordinate throughout the company affirmative action directed at seeking personnel from minority groups for employment and to provide encouragement and direction to our staff members to advance within the limits of each individual's capabilities.

## SECTION II - DISSEMINATION OF A.A./E.E.O. POLICY

Our Affirmative Action/Equal Employment Opportunity Policy will be disseminated to all relevant audiences within the company in accordance with the intent of the following federal and state laws, regulations and executive orders:

1. Civil Rights Act of 1964
2. Presidential Executive Order 11246, as amended
3. Title 23 USC 140
4. Title 49 C.F.R. Part 23
5. Governor's Executive Orders 3 & 17
6. Connecticut Fair Employment Practices Act
7. The Americans with Disabilities Act of 1990
8. Public Act No. 91-58
9. Civil Rights Act of 1991
10. Pregnancy Discrimination Act of 1978
11. ADEA 29 USC Sect. 261

This dissemination will be implemented through a non-discrimination policy statement in our personnel policy manual; posting of EEO posters and of this policy on bulletin boards; periodic written or oral statements from responsible management personnel; discussion of policy and affirmative action plans and achievements; in recruitment advertisements to all sources of personnel such as public and private employment agencies, universities, and also to any joint-venture or subcontractors. Fletcher-Thompson, Inc. will comply and submit documentation to substantiate efforts made and affirmative actions taken in an attempt to comply with the AA/EEO contract provisions contained in any State or Federal contract. These provisions include:

1. Specific Equal Employment Opportunity Responsibilities
2. Required Contract Provisions Construction Contracts
3. A (76) Affirmative Action Requirements
4. Training Special Provision
5. Minority Business Enterprises as Subcontractors
6. Standard Federal Equal Employment Opportunity Construction Contract Specification
7. Nondiscrimination Clause

Fletcher-Thompson, Inc. has used, and will continue to use, referral sources, publications and newspapers likely to yield minority and women applicants when hiring opportunities occur. Sources used to obtain minority and women applicants are listed below.

1. Connecticut Post, 411 State Street, Bridgeport, CT 06604 (203) 333-4151
2. New Haven Register, Long Wharf, New Haven, CT (203) 772-3700
3. Bridgeport Jobs, 350 Fairfield Ave, Bridgeport, CT 06604, (203) 334-5627
4. Newark Star Ledger – in print and on line
5. NY Times – in print and on line
6. Various college alumni websites
7. AEC Personnel
8. AEC Workforce
9. E-Architect
10. I-Hire Construction
11. The Engineering Clearinghouse

Fletcher-Thompson, Inc. will hereafter maintain and submit documentation as required to substantiate efforts made and affirmative action taken to provide equal opportunity to minorities and women in each instance of hire. All said advertising shall state that Fletcher-Thompson, Inc. is "An Equal Opportunity Employer".

### SECTION III - MATERNITY LEAVE/FAMILY LEAVE

Fletcher-Thompson, Inc. will provide up to 16 weeks of job-protected leave, during any 24 month period, to eligible employees for certain family and medical reasons. Employees are eligible if they have worked at Fletcher-Thompson, Inc. for at least one (1) year and have worked 1,250 hours in the previous twelve (12) months. Leave will be granted for the following reasons:

- a) to care for the employee's child after birth, placement for adoption or foster care.
- b) to care for the employee's spouse, son, or daughter, or parent who has a serious health condition, or
- c) for a serious health condition that makes the employee unable to perform the employee's job.

The following procedure shall be adopted:

1. If the employee has accrued paid vacation, the employee must use the paid vacation first, and then take the remainder of the leave unpaid for a total of up to 16 weeks.
2. An employee who is taking leave because of his/her own serious health condition, or that of a family member, must use all paid vacation before being eligible for unpaid leave.
3. An employee taking leave for the birth of a child must use 8 weeks paid disability leave for the purposes of FMLA substitution. (To qualify for the 8 weeks paid, you must be employed by Fletcher-Thompson, Inc. for at least one year. For length of employment under one year, paid leave will be pro rated.) The employee must then use all accrued paid vacation, and then take the remainder of the leave unpaid, for a total of up to 16 weeks.
4. An employee who is taking leave for the adoption or foster care of a child must use all paid vacation prior to being eligible for unpaid leave.
5. For the duration of an FMLA leave, Fletcher-Thompson, Inc. will maintain health coverage and other group benefits for the employee. However, the employee is required to pay the entire cost of the health benefit when out on unpaid leave.
6. Upon return to work from FMLA leave, employees, where possible, will be restored to their original or equivalent position with equal pay, benefits, and other terms of employment.

#### SECTION IV - COMPLAINT PROCEDURE

Fletcher-Thompson, Inc. will maintain a complaint procedure forum that will address discrimination complaints regarding race, color, religion, age, sex, marital status, creed, citizenship status, physical disability (including but not limited to blindness), veteran status, national origin or ancestry, mental disorder (or history thereof), sexual orientation or learning disability from both current and prospective employees. These individuals have the right to make full utilization of this Complaint Procedure Forum without jeopardizing their current or prospective employment status.

The components of the Complaint Procedure are the following:

1. All complaints must be in writing. The Equal Employment Opportunity Officer will receive all complaints of discrimination. The complaint may come directly from an employee or upon referral from a supervisor who has received a complaint from an employee.
2. All discrimination complaints filed under this procedure will be accepted for investigation up to, and including, fifteen (15) days after the date of the alleged discriminatory act.
3. All complaints will be recorded on a "Notice of Discrimination Complaint Form" and signed by the complainant. At this time, the complainant will be counseled as to the other avenues of redress open to him or her; i.e. the complaint procedure of the Commission on Human Rights and Opportunities and/or the Connecticut Department of Transportation Office of Contract Compliance.
4. The Office of Contract Compliance and the Transportation Commissioner will be notified simultaneously of all complaints and of the complaint's ultimate resolution.
5. All complaints will be investigated and processed by Fletcher-Thompson, Inc.'s Equal Employment Opportunity Officer within fifteen (15) days of their receipt.
6. The complainant will be notified, in writing, by the Equal Employment Opportunity Officer regarding the results of the investigation and the final disposition of the complaint, including any proposed remedial action.
7. Should the complainant disagree with the Equal Opportunity Employment Officer's decision, he or she can still avail himself or herself of any or all of the other avenues of redress previously explained (see number 3).
8. In the event of a complaint against the Equal Opportunity Employment Officer, complainants will be advised to utilize the Commission on Human Rights and Opportunities complaint procedure.
9. The Equal Employment Opportunity Officer will take the necessary steps to ensure the confidentiality of all Title VII complaint records and of any counseling done in the course of the complaint procedure.

## SECTION V - HARASSMENT POLICY

Fletcher-Thompson, Inc. strictly prohibits any form of sexual harassment in the work place. No employee shall ever be subjected to any form of sexual harassment by either another employee, supervisor, or client. It is prohibited by Title VII of the Civil Rights Act, as amended, and by Connecticut General Statute 45a-60 (a) (8) as a Discriminatory Employment Practice. If such harassment does occur, Fletcher-Thompson, Inc. will take swift corrective action, up to and including dismissal.

No supervisor may threaten or insinuate, either explicitly or implicitly, that an employee's submission to or rejection of sexual advances will in any way influence any personnel decision regarding that employee's employment, evaluation, compensation, advancement, assigned duties, or any other condition of employment or career development.

All sexual harassment is prohibited. In the absence of offered gain or threatened loss of employment benefits, crude or offensive language or jokes of a sexual nature and hostile or abusive work environment are also prohibited.

Employees who have complaints of sexual harassment should report such conduct immediately. They may make their complaint to any of the following: their supervisor, Human Resources, or any officer of the firm. Employees are not required to go through their immediate supervisor to make a complaint of sexual harassment. All complaints will be investigated in a confidential manner. Where investigation confirms the allegations, prompt corrective action will be taken.

It is not Fletcher-Thompson, Inc.'s intention to regulate social relationships that are freely entered into by employees. However, it is our affirmative duty to develop and maintain a workplace free of sexual harassment and intimidation. We expect the full support and cooperation of every employee to achieve this goal.

## SECTION VI - IMPLEMENTATION POLICY

Fletcher-Thompson, Inc. recognizes that failure to implement, monitor and enforce the firm's affirmative action program, including the submission of documentation to substantiate the efforts made and the affirmative action taken to implement, enforce and monitor the program, will result in the firm being required to recommit itself to the program in order to obtain a renewed approval status. Further, once approved, the affirmative action program will be upgraded annually in the anniversary month in which approval was granted.

## SECTION VII - RECORD KEEPING POLICY

Fletcher-Thompson, Inc. will keep such records as are necessary to document and substantiate compliance with the firm's equal employment opportunity obligations and submit such documentation to the Office of Contract Compliance or whichever state agency having jurisdiction upon request. The records kept will be designed to indicate:

1. The number of minority and non-minority group members and women employed in each job classification.
2. The progress and effort made in locating, hiring, training, qualifying, and upgrading minority and female employees.

3. The progress and effort made in securing the services of minority group subconsultants with meaningful minority and female representation among their employees.
4. Compliance with all other requirements described in this plan, such as meetings, instructions, employment efforts, etc.

All compliance records will be retained for a period of three (3) years following completion of any given contract and shall be available during office hours for inspection by authorized representatives of the appropriate governmental agency.

**SECTION VIII - RESPONSIBILITY POLICY FOR IMPLEMENTATION OF E.E.O. POLICY AND AFFIRMATIVE ACTION PROGRAM**

The President, Vice Presidents and E.E.O. Officer will be responsible for continued implementation of our equal employment opportunity and affirmative action programs and for:

1. Developing policy statements, affirmative action programs, internal and external communications;
2. Identifying problem areas and assisting managers in the firm solve equal employment opportunity and affirmative action problems;
3. Designing and implementing report systems to measure the effectiveness of the program, assessing the need for remedial action, and determining the degree to which the goals of our programs have been reached;
4. Serving as liaison between Fletcher-Thompson, Inc. and government enforcement agencies;
5. Ascertaining that equal employment and affirmative action policy statements required for government-financed contracts are fully met;
6. Ascertaining that subcontracts, joint-venture contracts and contracts for supplies and services contain the required equal employment opportunity and affirmative action clauses.

The Principals of Fletcher-Thompson, Inc. are committed to the firm's equal employment opportunity program and requires full implementation, monitoring and enforcement by the Vice Presidents, Chief Financial Officer, E.E.O. Officer and all supervisory and managerial personnel.

Fletcher-Thompson, Inc. recognizes that, by reference, the firm's Affirmative Action Policy statement, along with the EEO Contract Provisions contained in the State of Connecticut, constitute the firm's complete affirmative action program.

We hereby appoint Constance Koch as the Equal Employment Opportunity Officer of this firm.

**OFFICERS OF THE FIRM**

  
James A. Beaudin

Chairman

  
Michael S. Marcinek


President & Treasurer

  
John C. Oliveto

Secretary & Assistant Treasurer

  
Joseph G. Costa

Vice President

  
Kurt C. Baur

Vice President

  
Daniel J. Casinelli

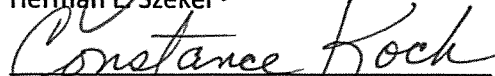
Vice President & Assistant Secretary

  
William Clegg

Vice President

  
Herman L. Szeker

Vice President

  
Constance Koch

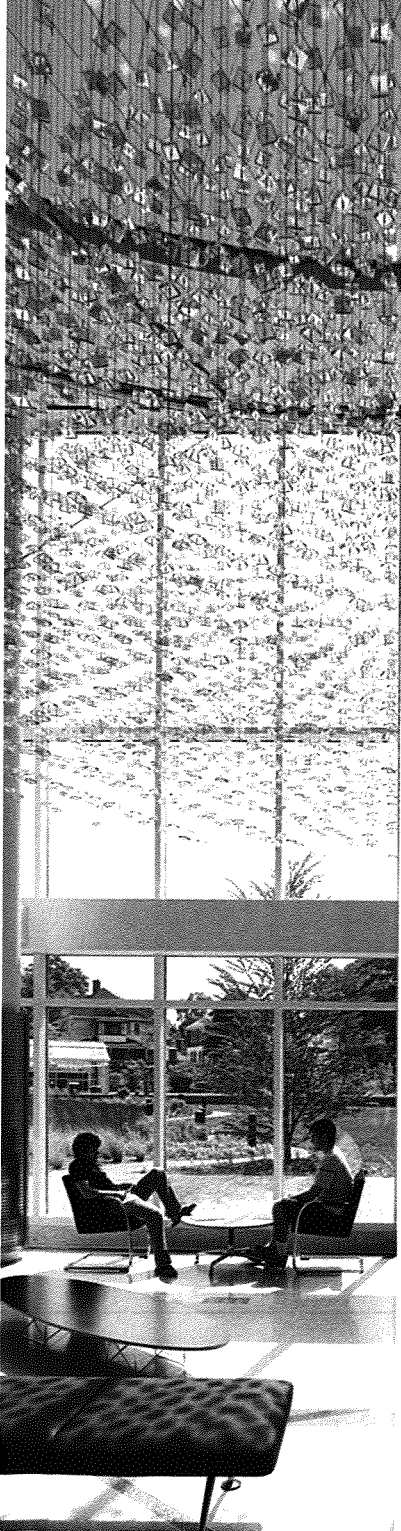
EEO Officer

4/26/2012 Date





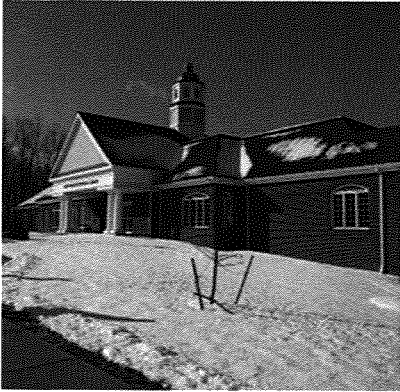
## F. Fee Proposals



Fletcher Thompson's fee proposal has been submitted under separate cover in a sealed envelope.



## G. Management Plan



**Edith Wheeler Memorial Library  
Exterior**



**Scotland Public Library  
Exterior**

FT's architects, engineers and interior designers are dedicated to the design of public schools and municipal buildings in Connecticut to meet the unique requirements of educational and government facilities. Throughout each and every project, we are in constant consultation with the town and school district and its representatives, working with them to develop and implement a detailed project schedule, developing value-added concepts and keeping the community informed of the project's progress.

### Project Understanding

Based upon our understanding of the scope of the project, our Facilities and Demographic Assessment will enable the District and Town to determine:

1. The present conditions of the facilities.
2. Whether the physical plants and systems meet the needs of the District's demographic and programmatic needs.
3. What future funding and management programs are required to maintain the functional operations of the facilities.
4. What buildings are needed for future use and/or whether or not redistricting/repurposing can achieve the desired ends, based upon demographic and facilities studies.

The project will be broken down into four phases:

1. Assessment
2. Data Analysis
3. Future Planning
4. Data

These phases will enable Monroe Public Schools (MPS) to do the following:

- Identify the extent and severity of the deferred maintenance liability,
- Identify what is necessary to adapt the selected facilities to meet the planned future requirements of the District and the Town,
- Identify and prioritize deferred maintenance reduction projects that best utilize the available funds and improve the functional aspects of the facilities,
- Identify the resources needed to maintain the operability, suitability, and value of the physical assets,
- Identify the building replacement costs and property/building condition indices. Develop a long range process that protects the District's assets,
- Develop a tool that supports the District's planning process by providing readily accessible facilities information for the MPS and Town decision making process, and
- Maintain an up-to-date database that supports the scope of work mentioned above and enable an ongoing process to manage plant assets and their functional use.

## G. Management Plan



Stepney Elementary School  
Corridor



Sarah J. Rawson Elementary School  
Like-New Renovations/Corridor

### Data Gathering Methods

FT recognizes the value of innovation and creative design solutions to our clients. As a market leader in the educational and government design field, we continually strive to understand the needs of our clients while keeping abreast of the current trends in the marketplace. To that end, we perform a due diligence survey, which is a study undertaken to confirm that adequate care has been taken to understand obstacles to meeting functional and financial objectives prior to committing to design solution.

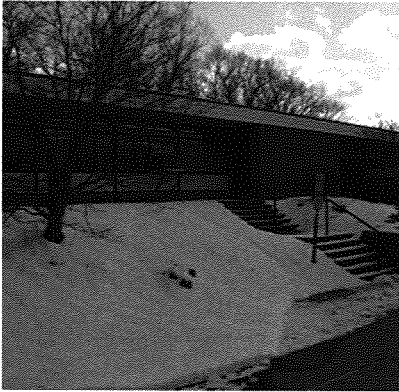
A due diligence survey includes the gathering of facts regarding the physical conditions on a particular project. Unlike most architectural firms, our in-house engineering capability has allowed us to include thorough investigations of a building's existing engineering systems, exceptionally early in the process, to help us make sure that all aspects of a project are considered. Our experience in this area has also contributed to a thorough knowledge of how cost estimating for a renovation project differs from a similar effort for a new building.

FT's approach to due diligence evaluations is illustrated as follows:

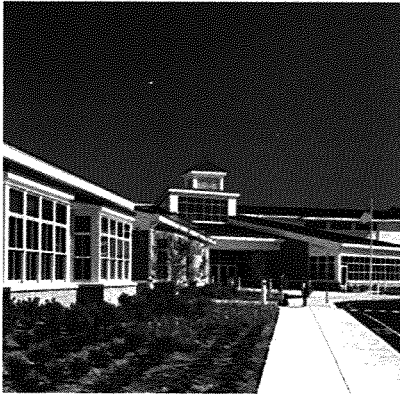
#### A. Facility Study and Report

1. Assess project/building type
  - Define client expectations
  - Collect and review available information regarding building(s)
  - Assemble construction drawings and specs (if available)
  - Elicit input from local building and fire officials
2. Gather building and site information
  - Systematically collect data at building site(s) using established FT procedures
  - Perform destructive testing only when necessary and with prior permission
3. What we look for
  - Code deficiencies
  - Overall condition of building systems (structural, mechanical, electrical, fire protection, etc.)
  - Priority maintenance items
  - Deferred maintenance items
  - Suggested site and/or building enhancements
  - Suggested or required upgrades
  - Change in building use

## G. Management Plan



**Stepney Elementary School  
Exterior**



**Frenchtown Elementary School  
Exterior**

4. The Report
  - Comprehensive report of findings using established FT format
  - Life Safety Code conformance
  - Local Regulatory Requirement compliance
  - ADA conformance
  - Change in use consequences
  - Structural/Building Envelope assessment
  - Mechanical/Electrical Systems assessment
  - Special Systems/Equipment assessments
  - Space Planning/Fit Studies (if applicable)
  - "Order of Magnitude" costs to repair/replace items and/or systems as identified
5. Follow-up
  - Independent testing if necessary to confirm initial findings
  - Evaluation of energy usage
6. Prepare a comprehensive written report on conditions

### B. Building Capacity / Enrollment Projections

1. Space Study
  - Review data provided by the School Administration and Town Officials
  - Document current space utilization
  - Verify existing use with District's established needs
  - Review District's long-term space needs
  - Review groupings, room sizes and activity time allotments
  - Establish balance of required space; provide options to meet space needs
2. Demographic Assessment: NESDEC will:
  - Gather and analyze federal census data (and updated estimates) on factors relevant to growth within the community including such factors as population size, household size and age composition.
  - Gather and review live birth data from the Connecticut Department of Public Health as well as from local municipal offices.
  - Interview (face-to-face and/or by telephone) municipal officials, regional planning staff, selected realtors/developers, and other appropriate individuals in order to gather data on growth within the community as measured by housing, zoning, as well as data on factors which tend to limit or encourage growth.
  - Analyze public school, non-public school and vocational school enrollment data for the past ten years, as available.
  - Prepare an analysis of the factors impacting past and future enrollment.
  - Prepare a ten-year enrollment projection on a grade-by-grade and grade combination basis – does not include school-by-school projections.
  - Prepare an analysis of the enrollment projections including a discussion of the modified cohort survival methodology used in their preparation.
  - Outline the assumptions upon which the enrollment forecast is based.

## G. Management Plan

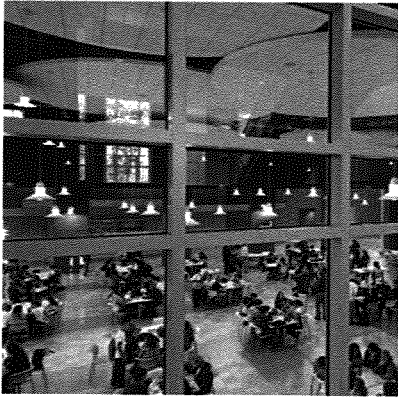


**Monroe Elementary School  
Cafeteria**

3. Program: Our team will:
  - Meet with members of the Board of Education and Town Officials to explore Mission and Goals
  - Meet with school administrators and town officials to exchange information regarding current and future programming
  - Exchange information regarding district-wide current and future education, town and community programming
  - Meet with the Board of Education and Town Officials as required to review, refine, and confirm the Space Needs Program
4. Prepare final report

### Schedule

Please refer to our Detailed Work Schedule included in this section. This schedule outlines our plan to complete the study phases in twelve weeks, as directed in your Addendum.



**Killingly High School  
New School/Cafeteria**

FT is a large regional A/E firm with adequate resources to properly staff and manage a project of this size and complexity. Our current workload schedule allows our design and engineering team to smoothly transition into the work required to perform and complete this project. This ensures that the Town will benefit from the knowledge and experience of our most qualified team.

This proposed schedule allows the design team twelve weeks to evaluate the existing facilities, perform a needs assessment study, understand the programmatic needs, and make recommendations to the Owner for review and comment. The final report will allow the Town to make informed decisions on moving forward with projects critical to maintaining the Town's assets and the ability to forecast long range, the best uses for each of the facilities. Our detailed work schedule indicates key milestone dates which can be modified with additional phases, if required.







## H. Resumes



As a full-service architectural and engineering firm, FT will provide the Town of Monroe with a team of highly experienced professionals representing all of the disciplines required for your assessment.

The specific team selected has significant experience on similar projects. The members of the project team are supported by a wide variety of specialists and technical staff who can be called upon to assist in delivering quality service within the schedule and budget established for the assessment. The staff identified to represent FT on this team will be available when we are authorized to proceed and kept available throughout the relevant portions of our services.

*An organization chart and resumes of our key personnel can be found at the end of this section.*

**Daniel L. Casinelli, AIA, LEED AP, Principal-in-Charge**, will lead the assessment as well as any programming components, and will manage the team throughout the entire project. He will also be responsible for coordinating, communicating, and controlling all professional service activities necessary. He will assure that the Town's objectives are clear and understood, and that the work is properly planned, staffed, and managed to fully achieve the Town's expectations and satisfaction.

**Vikas Nagardeolekar, AIA, Project Manager**, will have full project responsibility while working directly with the Principal-in-Charge to deliver a clear and concise report. He will be the point-of-contact for the entire project and will coordinate all communications and correspondence.

**Daniel Davis, AIA, LEED AP, Director of Design**, will study each facility during the assessment to evaluate the programmatic needs and provide general design direction when it is required.

**Richard Rapice, RA, LEED AP, Senior Project Architect and Code Compliance Specialist**, is responsible for building components and architectural systems, code analysis/review, and the coordination of team members.

**Robert Mazzadra, Senior Job Captain**, is responsible for overall in-house coordination between the team and consultants, and is responsible for overseeing project documentation.

**Bill Clegg, FIIDA, LEED AP, Principal of Interior Design**, is responsible for managing the interior finishes element of the facility conditions survey.

## H. Resumes



**Kathleen A. Ryan, LEED AP, Designer (Interiors)**, is responsible for surveying the conditions of the interior finishes. She will assist with programming, space planning, finish and furniture recommendations, and budgets.

**Herman L. Szeker, SE, PE, Principal of Structural Engineering**, will be responsible for performing an analysis of the structural systems as well as their load carrying capacities.

**John C. Oliveto, PE, Principal of MEP Engineering**, has overall responsibility for the mechanical, electrical, and fire protection engineering analyses.

**Richard W. Camara, PE, LEED AP, Chief Mechanical Engineer**, will be responsible for performing an analysis of the mechanical systems and evaluation of their condition and life expectancy.

**Michael W. Bensch, CEM, Electrical Department Head**, will be responsible for performing an analysis of the electrical systems and evaluation of their condition and life expectancy.

**Raymond C. Bjorkman, Plumbing/Fire Protection Designer**, will be responsible for fire protection, plumbing and life safety analyses.

### SUBCONSULTANTS

We have augmented our in-house team with the following subconsultants, whom we have worked with on numerous projects throughout Connecticut.

**New England School Development Council (NESDEC), Demographic Consultant**, has been a leader in assisting districts in determining future facility needs for over forty years. The services they provide to school districts encompass planning, executive search, learning and teaching, and research and development. NESDEC's staff has extensive experience in working with the full range of a community's constituencies, including city/town officials, school building committees and/or other ad hoc planning groups, school staffs, parents and other community members.

**Fuss & O'Neill EnviroScience, LLC, Environmental and Site/Civil Engineering**, are experts in surveying, land development, transportation and structures. They provide specialized services on projects which include adaptive reuse of contaminated sites, solutions to complex storm water treatment problems, and sustainable, environmentally compatible designs. They also offer a full range of services including industrial hygiene, asbestos and lead-based paint testing and consultation, training, laboratory analysis, health and safety consulting and monitoring, human and health risk assessments and environmental data assessments.

## H. Resumes



**Blades & Goven, LLC, Landscape Architecture**, is a team of design professionals offering full-service landscape architectural, site planning and related design services to clients in the public and private sectors. Since its formation in 1996, the firm has an extensive portfolio of completed public and private sector projects throughout the State. In addition to design services, Blades & Goven has established a successful track record of working with and receiving approvals from both local and state regulatory authorities. The firm utilizes up-to-date computer-aided design technology for project delivery and to seamlessly integrate with other design firms.

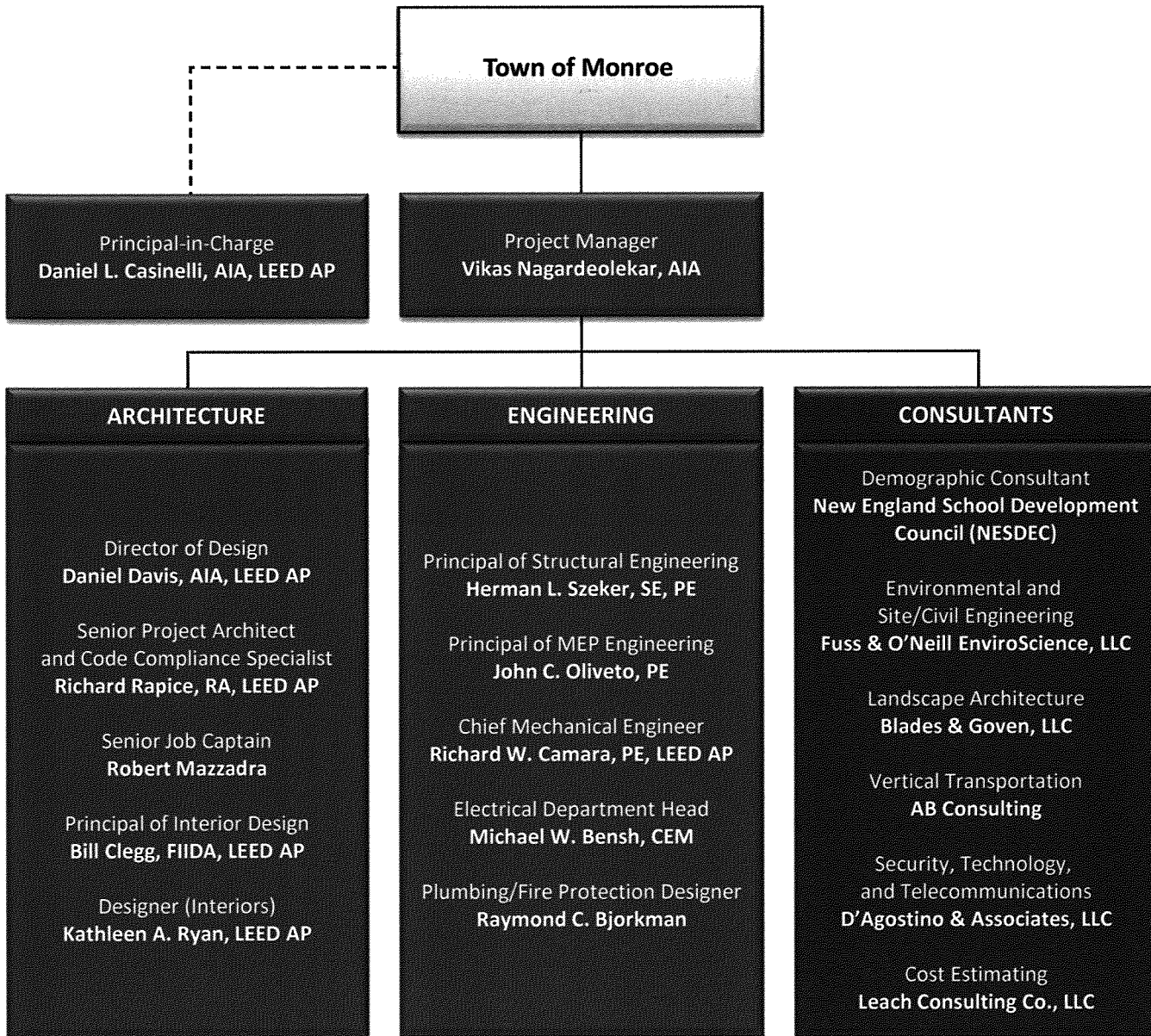
**AB Consulting, Vertical Transportation**, has been providing engineering and consulting services, primarily for vertical transportation systems, for architects, engineers, owners, property managers and governmental agencies since 1998. The AB team has over 29 years of experience with various vertical transportation devices including elevators, escalators, side walk elevators, dumbwaiters, moving walks and other similar equipment.

**D'Agostino and Associates, Security, Technology, and Telecommunications**, is a premier technology design and support service company. Years of research, practice, and field experience gives them the edge at anticipating the direction and development of new technologies. Their design professionals specialize in assessing client needs to implement cost efficient and practical strategies, while evaluating each project thoroughly to incorporate the best case-specific technologies to efficiently blend these needs with the perfect balance of state-of-the-art products.

**Leach Consulting Company, LLC, Cost Estimating**, has been providing cost estimating services to the construction industry for more than thirty-seven years. They have specific expertise in the master plan and pre-construction phase development, integrating design and budget control to maximize the clients' program without sacrificing program or aesthetics.

## Team Organization Chart

- Fletcher Thompson
- Consultants



## Daniel L. Casinelli, AIA, LEED AP

Principal-in-Charge



Mr. Casinelli has over twenty-five years' experience in the field of architecture. His expertise encompasses master planning, design, construction document development, interior design, contract administration, project coordination, and the direction of support staff in the accomplishment of project assignments. Commissions with which he has been associated include institutional, commercial, and mixed use complexes.

Mr. Casinelli's primary responsibility as Principal of K-12 is to assure that the client's objectives are clear and understood, and that the work is properly planned and managed to fully achieve the client's expectations and satisfaction.

### EDUCATION

B. Arch., NY Institute of Technology  
B.S. Architecture Engineering, NY Institute of Technology  
Assoc. Architecture Technology, Norwalk State Technical College

### PROFESSIONAL REGISTRATIONS

Registered Architect: CT, DE, FL, MA, MD, ME, MI, NH, NJ, NY, OH, PA, RI, VT  
Licensed Interior Designer: CT  
LEED Accredited Professional

Security Study for Five Schools  
**Monroe Public Schools**  
Monroe, CT

Natatorium Improvements  
**Masuk High School**  
Monroe, CT

Long Range School Plan  
**Shelton Public Schools**  
Shelton, CT

District-Wide Elementary Schools Study  
**Stamford Public Schools**  
Stamford, CT

Program and Feasibility Study  
Additions/Like-New Renovations  
**Joseph D. DePaolo and John F. Kennedy Middle Schools**  
Southington, CT

Feasibility Study and Design  
Additions/Renovations  
**Wamogo Regional High School**  
Litchfield, CT

Feasibility Study and Design  
New High School  
**New Milford High School**  
New Milford, CT

Long Range Educational Plan Study  
**Regional School District 16**  
Prospect and Beacon Falls, CT

Additions/Renovations  
**Booth Hill Elementary School**  
Shelton, CT

Additions/Historic Renovations  
**Regional Multicultural Magnet School**  
New London, CT

Additions/Like-New Renovations  
**Perry Hill School**  
Shelton, CT

New Grades 3-5 School  
**Weston Intermediate School**  
Weston, CT

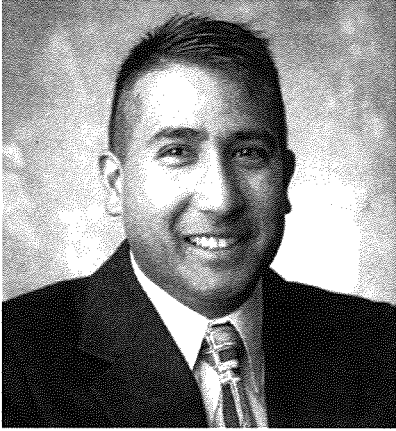
Like-New Renovations/Conversion  
**Sarah Noble Intermediate School**  
New Milford, CT

Additions/Renovations  
**Middlebrook Middle School**  
Wilton, CT

Additions/Renovations  
**Shelton High School**  
Shelton, CT

## Vikas S. Nagardeolekar, AIA

Project Manager, Associate Principal



Mr. Nagardeolekar has over seventeen years of experience in the architectural profession. His work experience includes architectural design and drafting, master/facility planning, site master plan studies, project programming and area calculation/allocation, existing conditions evaluation, design, documentation and construction administration. The diversity in his experience gives him a broad perspective and approach to project development, team building and problem solving, and on the building process from inception to completion.

As a Project Manager and Architect, Vikas' responsibilities range from project conceptualization to execution, staff allocation, budgeting, cost analyses, scheduling, consultant coordination and administration, and construction documentation and administration. He has worked for both public and private clients on a wide range of projects including primary education, higher education, and healthcare facilities.

### EDUCATION

B. Arch., Cornell University

### PROFESSIONAL REGISTRATIONS

Registered Architect: CT

Licensed Interior Designer: CT

NCARB Certified

Massachusetts Certified Public Purchasing Official

### PROFESSIONAL AFFILIATIONS

American Institute of Architects

AIA Connecticut

New England Healthcare Engineers Society

Building Code Enforcement Officer

Municipal Facilities Study

**City of Torrington**

Torrington, CT

Town Hall Study and Master Plan

**Town of Thompson**

Thompson, CT

Long Range Educational Plan Study

**Regional School District 16**

Prospect and Beacon Falls, CT

System-Wide Space Needs Assessment Study

**Tolland Public Schools**

Tolland, CT

Feasibility Study

**Killingly Public Schools**

Killingly, CT

Master Planning, Study and Review

**East Granby Public Schools**

East Granby, CT

Feasibility Study

**Fairfield High School**

Fairfield, CT

Capital Needs Assessment Study

**Louis Toffolon Elementary School**

**Plainville High School**

Plainville, CT

Pre-Referendum Design Study

Additions/Renovations, PreK-12

**Thompson Public Schools**

Thompson, CT

Like-New Renovation, K-12 School

**International Baccalaureate School**

Hartford, CT

Additions/Alterations

**Rochambeau Middle School**

Southbury, CT

Feasibility Study and Design

Additions/Like-New Renovations

**Stonington High School**

Stonington, CT

Feasibility Study and Design

Additions/Renovations

**Simsbury High School**

Simsbury, CT

Additions/Alterations

**Pomperaug High School**

Southbury, CT

Site Master Planning, Site Selection Studies and Facility Programming

**Long Lane School\***

Middletown, CT

\* Previous Experience

## Daniel Davis, AIA, LEED AP

Director of Design



Mr. Davis is an Associate and the Design Director for the firm. He has thirty years of experience designing a broad range of project types including educational, institutional, commercial, corporate and industrial facilities. However, he specializes in the design of K-12 educational facilities, and frequently presents at national educational facility conferences. Dan has published his architectural writings in a variety of forums ranging from local newspapers to national professional journals and is a contributing author on a number of educational book including 'The Middle School of the Future'. His projects have been published in leading architectural magazines and won prestigious design awards. He is also a Professor of Architecture at the University of Hartford, where he teaches architectural history and design.

### EDUCATION

M. Arch., Pratt Institute  
B.S. Architecture, Pratt Institute  
B.S., The Catholic University of America

### PROFESSIONAL REGISTRATIONS

Registered Architect: CT and NY  
NCARB Certified  
LEED Accredited Professional

### PROFESSIONAL AFFILIATIONS

American Institute of Architects  
AIA Connecticut  
AIA Committee on Architecture for Education  
Greater Middletown Preservation Trust  
American Society for Engineering Education  
Association of Collegiate Schools of Architecture  
National Trust for Historic Preservation  
Council of Educational Facility Planners International  
Portland Historical Society  
Society of Architectural Historians

City Hall Study  
**City of Torrington**  
Torrington, CT

Long Range Educational Plan Study  
**Regional School District 16**  
Prospect and Beacon Falls, CT

Pre-Referendum Design Study  
Additions/Renovations, PreK-12  
**Thompson Public Schools**  
Thompson, CT

Program and Feasibility Study  
Additions/Like-New Renovations  
**Joseph D. DePaolo and John F. Kennedy Middle Schools**  
Southington, CT

Feasibility Study and Design  
Additions/Renovations  
**Southwest Elementary School**  
Torrington, CT

Feasibility Study and Design  
**Newtown High School**  
Newtown, CT

Feasibility Study and Design  
**Simsbury High School**  
Simsbury, CT

Feasibility Study and Design  
**Stonington High School**  
Stonington, CT

Feasibility Study and Design  
**John J. Allison Jr. Polaris Center**  
East Hartford, CT

Additions/Like-New Renovations  
**Richard J. Kinsella Magnet School**  
Hartford, CT

Additions/Renovations  
**Sarah J. Rawson Elementary School**  
Hartford, CT

Historic Renovations/Additions  
**Vogel-Wetmore Elementary School**  
Torrington, CT

Additions/Renovations  
**Longfellow Elementary School**  
Bridgeport, CT

Additions/Like-New Renovation  
**Sarah Noble Intermediate School**  
New Milford, CT

Additions/Like-New Renovation  
**Brien McMahon High School**  
Norwalk, CT

## Richard Rapice, RA, LEED AP

Senior Project Architect and Code Compliance Specialist



Mr. Rapice has more than twenty-five years of architectural experience specifically managing large scale commercial projects from early conceptual stages through construction. Richard uses his creative talents and experience to lead and contribute to successful architectural designs that are complex, challenging, rewarding as well as award winning.

Mr. Rapice is a Licensed State of Connecticut Building Code Enforcement Officer. Richard has extensive experience in working with the State of Connecticut building codes. He has worked on the code analyses of large scale buildings including educational facilities as well as large scale entertainment facilities.

### EDUCATION

B. Arch., Pratt Institute  
Architecture, University of Texas

### PROFESSIONAL REGISTRATIONS

Registered Architect: CT  
Licensed Interior Designer: CT  
LEED Accredited Professional  
Certified Construction Contract Administrator  
Certified Construction Document Technologist  
Certified Construction Specifier  
NCARB Certified

### PROFESSIONAL AFFILIATIONS

American Institute of Architects  
Building Code Enforcement Officer

Feasibility Study and Design  
Additions/Renovations  
**Newtown High School**  
Newtown, CT

Like-New Renovations  
**Enlightenment High School**  
Waterbury, CT

New Flagship High School  
**Achievement First Amistad High School**  
New Haven, CT

Additions/Renovations  
**Columbus Elementary School\***  
Bridgeport, CT

Additions/Renovations  
**Park City Magnet School\***  
Bridgeport, CT

Design and Production of Construction Documents and Specifications  
**Marin Munoz K-8 School\***  
Bridgeport, CT

Code Compliance Update  
**Waterbury Public Schools\***  
Waterbury, CT

Additions/Renovations  
**Danbury High School\***  
Danbury, CT

Additions  
**Dodd Middle School\***  
Cheshire, CT

Community Corrections Center Additions and Renovations;  
Wastewater Treatment Plan Additions and Renovations  
**City of Bridgeport\***  
Bridgeport, CT

Senior Housing Renovations  
**Oxford Housing Authority\***  
Oxford, CT

New Fire Safety Complex  
**Town of Branford\***  
Branford, CT

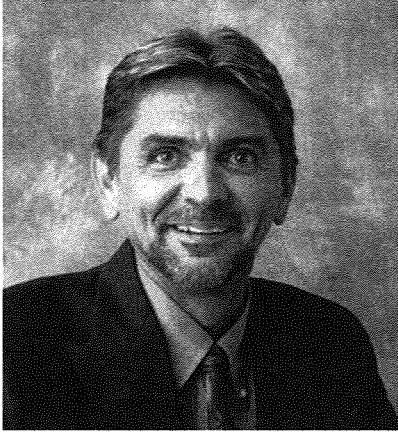
Renovations for EMS Headquarters  
**Town of Stratford\***  
Stratford, CT

\* Previous Experience



## Robert C. Mazzadra

Senior Job Captain



Mr. Mazzadra has more than forty years' experience in the production of construction documents for a broad range of building types. As Senior Job Captain he is responsible for overall in-house coordination between our architecture and engineering disciplines and consultants, performing redi-check reviews, reviewing contractor submittals & field sketches, as well as performing contract administration duties.

### EDUCATION

Norwalk State Technical College

### PROFESSIONAL AFFILIATIONS

U.S. Green Building Council

City Hall Building Improvements;  
Central Fire Headquarters;  
West Side Fire Station  
**City of Bridgeport**  
Bridgeport, CT

On-Call Services  
**Legislative Office Building**  
Hartford, CT

Existing Conditions Survey and Pre-  
Conceptual Design  
**U.S. Postal Service**  
Stamford, CT

Long Range Educational Plan Study  
**Regional School District 16**  
Prospect and Beacon Falls, CT

Program and Feasibility Study  
Additions/Like-New Renovations  
**Joseph D. DePaolo and John F. Kennedy Middle Schools**  
Southington, CT

Historic Renovations/Additions  
**Vogel-Wetmore Elementary School**  
Torrington, CT

Code Upgrades  
**Bassick High School**  
Bridgeport, CT

Site and Building Improvements, and  
Window Replacement  
**Hurlbutt Elementary School**  
Weston, CT

Additions/Renovations  
**Torrington Elementary School**  
Torrington, CT

Like-New Renovation, K-12 School  
**International Baccalaureate School**  
Hartford, CT

New K-5 Interdistrict Magnet School  
**Glastonbury-East Hartford Elementary Magnet School**  
Glastonbury, CT

Additions/Renovations  
**Midland Elementary School**  
**Milton Elementary School**  
**Osborne Elementary School**  
Rye, NY

Additions/Like-New Renovation  
**Brien McMahon High School**  
Norwalk, CT

HVAC Improvements  
**Redding Elementary School**  
**John Read Middle School**  
Redding, CT

## Bill Clegg, FIIDA, LEED AP

Principal of Interior Design



Bill Clegg has been involved in creating the built environment since 1974. His expertise in interior design and project management is a valuable asset to our company. As Principal of Interiors, Bill shares his enthusiasm with Fletcher Thompson staff and our clients. He enjoys hands-on contacts with clients and takes pride in leading the design process for many complex, high-profile interior design projects.

Bill is very involved in the International Interior Design Association, interior designers' leading professional organization. He is committed to the interior design profession and fosters the mentoring of the firm's junior designers.

### EDUCATION

Wentworth Institute of Technology

### PROFESSIONAL REGISTRATIONS

Interior Design: CT

LEED Accredited Professional

### PROFESSIONAL AFFILIATIONS

International Interior Design Association (IIDA), Professional Member  
IIDA International Board, VP of Members

IIDA New England Chapter, Past President

IIDA International Finance Team

IIDA Tennessee Chapter, Juror

IIDA Showroom and Booth Design Competition Judge

AIA Associate Member

BOMA Affiliate Member

IFMA Affiliate Member

NCIDQ Juror

Boston Society of Architects Design

Addition/Like-New Renovations

**Masuk High School\***

Monroe, CT

Additions/Renovations

**Atwater Library\***

North Branford, CT

New Public Library

**Easton Library\***

Easton, CT

Interior Finish/Furniture Selections

**Robbins Library\***

Arlington, MA

Additions/Renovations

**Smith Library\***

North Branford, CT

New Public Library

**Thompson Library\***

Thompson, CT

New Police Department

**Fall River Police Department\***

Fall River, MA

New Police Station

**Manchester Police Department\***

Manchester, CT

Needs Assessment and Preliminary Design

**Simsbury Farms Recreation Center\***

Simsbury, CT

Refurbishment

**Shepardson Community Center\***

Middlebury, CT

Master Plan and Design

**Hebron Health and Aquatic Center\***

Hebron, CT

Master Planning Study

**Rocky Hill Public Schools\***

Rocky Hill, CT

Feasibility Study and Design

Additions/Like-New Renovations

**Bolton High School**

Bolton, CT

Master Plan

**Christian Heritage School\***

Trumbull, CT

Master Planning Study

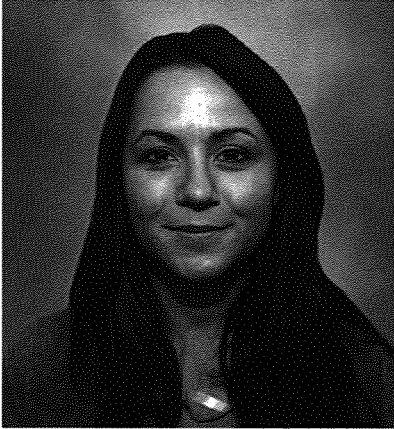
**South Windsor Elementary School\***

South Windsor, CT

\* Previous Experience

## Kathleen A. Ryan, LEED AP

Designer, Interiors, Associate



Ms. Ryan has over seven years of extensive experience in interior design and architecture, providing an aesthetic vision of spatial design in commercial interiors. Her vision and experience aid her in developing design solutions for our clients that are creatively appealing, technically sophisticated, and pragmatically satisfying. As Designer, she is responsible for the programming, space planning, finish and furniture selection, budgets, construction documents, millwork and construction details, as well as some construction support to ensure that the intended design is carried through the construction process. Ms. Ryan was made an Associate of the firm in 2012.

### EDUCATION

B.F.A. Interior Design, Paier College  
B.A. Political Science, History, University of Connecticut

### PROFESSIONAL REGISTRATIONS

LEED Accredited Professional

Pre-Referendum Design Study  
Additions/Alterations, PreK-12  
**Thompson Public Schools**  
Thompson, CT

Program and Feasibility Study  
Additions/Like-New Renovations  
**Joseph D. DePaolo and John F. Kennedy Middle Schools**  
Southington, CT

Feasibility Study and Design  
Additions/Renovations  
**Newtown High School**  
Newtown, CT

Feasibility Study and Design  
Additions/Renovations  
**Francis T. Maloney High School**  
Meriden, CT

Additions/Like-New Renovations  
**Plantsville Elementary School**  
Southington, CT

Additions/Like-New Renovations  
**Richard J. Kinsella School of the Arts**  
Hartford, CT

Like-New Renovation, K-12 School  
**International Bacalaureate School**  
Hartford, CT

Additions/Renovations  
**Longfellow Elementary School**  
Bridgeport, CT

New K-5 Interdistrict Magnet School  
**Glastonbury-East Hartford Elementary Magnet School**  
Glastonbury, CT

New PreK-5 School  
**Regional School District #16**  
Prospect and Beacon Falls, CT

New Flagship High School  
**Achievement First Amistad High School**  
New Haven, CT

New High School  
**Goodwin College Connecticut River Academy Magnet School**  
East Hartford, CT

New High School and VoAg Building  
**Killingly High School**  
Killingly, CT

Like-New Renovations  
**Enlightenment High School**  
Waterbury, CT

## Herman L. Szeker, SE, PE

Principal of Structural Engineering



Mr. Szeker joined Fletcher Thompson as Principal of Structural Engineering, following association with Szeker Engineering, Inc. where he was responsible for design engineering, construction supervision and project management of a broad range of facilities. He has over thirty-five years of experience in structural design for all types of commercial, institutional, and industrial structures, utilizing steel, reinforced and post-tensioned concrete, masonry and wood systems.

Mr. Szeker is responsible for structural analysis, systems selection and design, cost evaluation, specification preparation, and supervision of contract documents for both new and renovated work.

### EDUCATION

M.S., Cleveland State University  
B.S., Cleveland State University

### PROFESSIONAL REGISTRATIONS

Professional Engineer: NY, NJ, CT, FL,  
MD, MA, MI, MO, OH, RI, WI

### PROFESSIONAL AFFILIATIONS

American Concrete Institute  
Post-Tensioning Institute  
American Institute of Steel Design  
Connecticut Building Congress,  
Former Director  
Structural Engineers Coalition  
Connecticut Engineers in Private  
Practice

Vehicle Maintenance Facility  
**North Central Connecticut Correc-  
tional Facility**  
Suffield, CT

Program and Feasibility Study  
Additions/Like-New Renovations  
**Joseph D. DePaolo and John F. Ken-  
nedey Middle Schools**  
Southington, CT

Feasibility Study and Design  
Additions/Renovations  
**Francis T. Maloney High School**  
Meriden, CT

Addition to Accommodate Elevator  
**Beacon Falls Town Hall\***  
Beacon Falls, CT

Renovations  
**Stratford Town Hall\***  
Stratford, CT

Capital Improvements Contract  
**New York City School Construction  
Authority**  
New York City, NY

Like-New Renovation, K-12  
**International Baccalaureate School**  
Hartford, CT

Additions/Renovations  
**Longfellow Elementary School**  
Bridgeport, CT

Classroom Addition  
**Bielefield Elementary School\***  
Middletown, CT

Like-New Renovation  
**Birdseye School\***  
Stratford, CT

New Flagship High School  
**Achievement First Amistad High  
School**  
New Haven, CT

Fast-Track Projects  
**Harborside School, East Shore  
School and West Shore School\***  
Milford, CT

Additions/Renovations  
**Faifield College Preparatory School**  
Fairfield, CT

Specialized Class Space Addition  
**Vo-Ag Regional School\***  
Middletown, CT

\* Previous Experience

## John C. Oliveto, PE

Principal of MEP Engineering



Mr. Oliveto has over forty years of experience in the design and construction of significant facility projects. As Principal of MEP Engineering, his primary responsibilities include: marketing, managing project teams, controlling project budgets and schedules, overseeing quality of work, and executing the projects in accordance with scope to achieve the client's expectations and satisfaction.

### EDUCATION

B.S., Manhattan College

### PROFESSIONAL REGISTRATIONS

Professional Engineer: NJ, CT, FL, ME, MA, MO, NH, NY, RI, VT  
NCEES Certified - National Council of Examiners for Engineering and Surveying

### PROFESSIONAL AFFILIATIONS

Connecticut Building Congress, Past President (2nd Term)  
State of Connecticut Department of Public Works, Advisory Council  
Connecticut Construction Guidelines Coalition, Vice-Chairman  
Construction Specifications Institute (CSI), Member  
ECHN – Business Alliance for Community Health (BACH), Member and Advisory Board Member  
Bridgeport Regional Business Council, Board of Directors (Past)  
Cardinal Shehan Center, Board of Directors (Past)

Program and Feasibility Study  
Additions/Like-New Renovations  
**Joseph D. DePaolo and John F. Kennedy Middle Schools**  
Southington, CT

Feasibility Study and Design  
Additions/Renovations  
**Francis T. Maloney High School**  
Meriden, CT

Exterior Facade/HVAC Study  
**Hasbro**  
East Longmeadow, MA

Northend Senior Center;  
New Public Safety Complex  
**City of Hartford**  
Hartford, CT

Office Renovations  
**City of Hartford**  
Hartford, CT

City Hall Historic Restoration/Renovations  
**City of Milford**  
Milford, CT

Existing Conditions Survey and Pre-Conceptual Design  
**U.S. Postal Service**  
Stamford, CT

Renovations and Code Compliance  
**Parsons Government Center**  
Milford, CT

On-Call Services  
**Legislative Office Building**  
Hartford, CT

Additions/Renovations  
**Longfellow Elementary School**  
Bridgeport, CT

Renovations, PreK-6  
**6 to 6 Early Childhood Regional Magnet School**  
Bridgeport, CT

Additions/Renovations  
**Fairfield Woods Middle School**  
Fairfield, CT

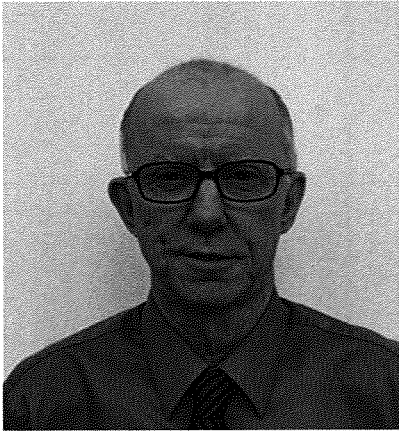
Additions/Renovations  
**Memorial Middle School**  
Middlebury, CT

Fire Reconstruction/Addition  
**Cos Cob Elementary School**  
Greenwich, CT

HVAC Improvements  
**Region 9 Redding Schools**  
Redding, CT

## Richard W. Camara, PE, LEED AP, CEM

Chief Mechanical Engineer



Mr. Camara has over forty years of experience in the field of mechanical engineering. His expertise encompasses knowledge of HVAC and plumbing systems, project management, energy analyses and code compliance, construction drawings and specifications, construction cost estimations, contractor bid evaluations, shop drawing reviews, constructions inspections, reports and punch lists.

As a Chief Mechanical Engineer he will be responsible for performing an analysis of the mechanical systems and evaluation of their condition and life expectancy.

### EDUCATION

B.S., University of Vermont

### PROFESSIONAL REGISTRATIONS

Professional Engineer: NJ, CT

### PROFESSIONAL AFFILIATIONS

Member American Society of Heating, Refrigeration & Air Conditioning Engineers (ASHRAE)

Northend Senior Center  
**City of Hartford**  
Hartford, CT

On-Call Services  
**New York City Fire Department**  
New York City, NY

Town Hall MEP Upgrades  
**Town of Suffield**  
Suffield, CT

Long Range Educational Plan Study  
**Regional School District 16**  
Prospect and Beacon Falls, CT

Program and Feasibility Study  
Additions/Like-New Renovations  
**Joseph D. DePaolo and John F. Kennedy Middle Schools**  
Southington, CT

Feasibility Study and Design  
Additions/Renovations  
**Francis T. Maloney High School**  
Meriden, CT

Additions/Renovations  
**Longfellow Elementary School**  
Bridgeport, CT

New K-5 Magnet School  
**Glastonbury-East Hartford Elementary Magnet School**  
Glastonbury, CT

Additions/Renovations  
**Fairfield College Preparatory School**  
Fairfield, CT

New High School  
**Goodwin College Connecticut River Academy Magnet School**  
East Hartford, CT

HVAC Improvements  
**Region 9 Redding Schools**  
Redding, CT

Campus Renovation Expansion  
**Brattleboro High School\***  
Brattleboro, VT

Prototype Design and 36 Resites of  
K-6 Elementary Schools  
HVAC Plumbing and Fire Design  
**Clark County School System\***  
Las Vegas, NV

\* Previous Experience

## Michael W. Bensch, CEM

Electrical Department Head



Mr. Bensch has over twenty years of experience designing electrical and low-voltage systems for a wide variety of clients throughout Connecticut, New York, New Jersey and Massachusetts. He has worked on all building types in various capacities including project manager and lead electrical designer. During his tenure as an electrical designer, he has been responsible for lighting system design and analysis, power system distribution, mission-critical design, N+1 generator and UPS schemes, cost estimating, bid review and owner consultation, selecting engineered systems & equipment, construction administration services, peer reviews, specifications, and field supervision. Prior to Mr. Bensch's engineering career, he gained invaluable practical knowledge as an electrical contractor in New Jersey for more than eight years.

### EDUCATION

B.S., New Jersey Institute of Technology

### PROFESSIONAL REGISTRATIONS

Certified Energy Manager

Exterior Facade/HVAC Study

**Hasbro**  
East Longmeadow, MA

On-Call Services

**New York City Fire Department**  
New York City, NY

Program and Feasibility Study  
Additions/Like-New Renovations

**Joseph D. DePaolo and John F. Kennedy Middle Schools**  
Southington, CT

Long Range Educational Plan Study  
**Regional School District 16**  
Prospect and Beacon Falls, CT

Pre-Referendum Design Study  
Additions/Alterations, PreK-12  
**Thompson Public Schools**  
Thompson, CT

Feasibility Study and Design  
Additions/Renovations  
**Francis T. Maloney High School**  
Meriden, CT

Feasibility Study and Design  
Additions/Renovations  
**Newtown High School**  
Newtown, CT

Long Range Plan and Design  
Additions/Renovations  
**Shelton High School**  
Shelton, CT

Additions/Renovations  
**Longfellow Elementary School**  
Bridgeport, CT

New K-5 Magnet School  
**Glastonbury-East Hartford Elementary Magnet School**  
Glastonbury, CT

Additions/Renovations  
**Norwalk High School**  
Norwalk, CT

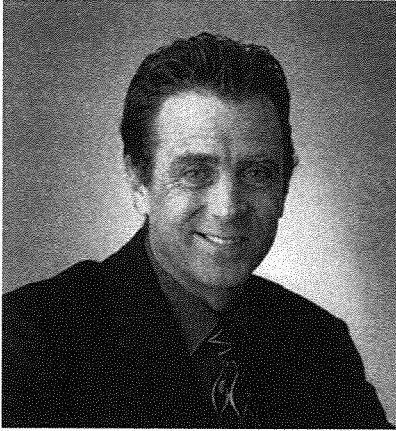
Additions/Renovations  
**Fairfield College Preparatory School**  
Fairfield, CT

New High School and VoAg Building  
**Killingly High School**  
Killingly, CT

HVAC Improvements  
**Region 9 Redding Schools**  
Redding, CT

## Raymond C. Bjorkman

Plumbing / Fire Protection Designer



Mr. Bjorkman has prepared designs for plumbing and fire protection systems for over thirty-five years. For the past ten years he co-managed the plumbing / fire protection department for another consultant where he was responsible for conceptual design through final bid documents for numerous projects. He coordinated CADD drawing standards and specifications and he provided peer review for projects as needed. In addition, he assisted owners with the bidding process and provided construction administration services.

As Plumbing / Fire Protection Designer, he will be responsible for fire protection, plumbing and life safety design. He is proficient in CAD and has coordinated projects with all responsible trades including structural and electrical disciplines.

### EDUCATION

Porter and Chester Institute

### PROFESSIONAL AFFILIATIONS

American Society of Plumbing Engineers

Pre-Referendum Design Study  
Additions/Alterations, PreK-12  
**Thompson Public Schools**  
Thompson, CT

Long Range Plan  
**Shelton Public Schools**  
Shelton, CT

Feasibility Study - 2 Middle Schools  
**Guilford Public Schools**  
Guilford, CT

New Fire Station  
**Town of Bloomfield\***  
Bloomfield, CT

New Police Station  
**Town of Cheshire\***  
Cheshire, CT

New Police Station  
**Town of Lebanon\***  
Lebanon, CT

New Bathroom Facilities  
**Acadia National Park\***  
Bar Harbor, ME

New Garage, Bus and Train Station  
**Bridgeport Intermodal Transportation Center\***  
Bridgeport, CT

Program and Feasibility Study  
Additions/Like-New Renovations  
**Joseph D. DePaolo and John F. Kennedy Middle Schools**  
Southington, CT

Feasibility Study and Design  
Additions/Renovations  
**Francis T. Maloney High School**  
Meriden, CT

Feasibility Study and Design  
Additions/Renovations  
**Newtown High School**  
Newtown, CT

Additions/Like-New Renovations  
**Perry Hill School**  
Shelton, CT

Additions/Historic Renovations  
**Regional Multicultural Magnet School**  
New London, CT

Additions and Renovations  
**Broadview Middle School**  
Danbury, CT

\* Previous Experience



**Demographic Consultant**

**New England School Development Council (NESDEC)**

## **NESDEC PROJECT TEAM MEMBERS**

### **Donald G. Kennedy, Ed.D., Senior Consultant**

Dr. Kennedy received his Bachelor's degree from Colby College, his Masters from Wesleyan University and his Doctorate from the Harvard Graduate School of Education. He has been Superintendent of Schools in Maynard and Duxbury, Massachusetts and has held numerous administrative positions in the Weston, Massachusetts School District. Dr. Kennedy has taught at the graduate level and has consulted with many school districts in matters of curriculum, facility planning, organizational development and early childhood education. Dr. Kennedy has done extensive work in the area of school enrollment forecasting, and has served as Team Leader for over one hundred fifty NESDEC reports.

### **John Kennedy, M.A., Field Consultant**

Mr. John Kennedy has been an educator for over thirty years. He received his B.A. from Villanova University and a M.A. from Boston College. He has served as a Director of Curriculum, Assessment and Professional Development and a K-12 Curriculum Coordinator. Prior to that, he was a Department Chairperson and Classroom Teacher. He has had extensive experience with curriculum mapping, standards alignment and assessment, and professional development planning and implementation. He has also served as a Title I Director. Mr. Kennedy has led several Department of Education workshops and seminars on a range of topics related to improving academic achievement. He has served as an Assistant Chair on an NEASC Visiting Committee and he was a member of the committee that developed the Massachusetts Social Studies Curriculum Framework. Mr. Kennedy has participated in and served as Team Leader for numerous NESDEC facilities planning projects throughout New England.

### **Margery Clark, M. Ed., Staff Associate**

Ms. Clark has been a public school educator for over thirty years. She received a Bachelor's degree from the University of Connecticut and a Master's degree from Lesley University. She has served as a primary and elementary school Principal in three school districts, as a K-8 Gifted Specialist and Coordinator, and as an elementary teacher in three states. She serves as a facilitator of professional workshops and most recently has taught graduate courses on Mathematics Teaching and Supervision for Fitchburg State College. Throughout New England, Ms. Clark has visited schools, participating in numerous NESDEC facilities planning projects, completing reviews of educational programs, school facility surveys, and school capacity analyses.

**Arthur L. Bettencourt, Ed.D., Executive Director**

Dr. Bettencourt received his B.A. from Salem State College, his Master's degree from Tufts University, and his Doctorate from Boston University. He served as a Superintendent of Schools for over twenty years. Prior to working as a Superintendent, he held several administrative positions in public schools. Dr. Bettencourt has been a Lecturer at Simmons College in Boston, Massachusetts, and is active in the training and preparation of educators at the graduate level. He has also offered numerous professional development workshops in school governance, planning and organizational development, leadership entry, career path development, and curriculum design. While serving as a superintendent, Dr. Bettencourt administered several school construction and renovation projects at both the elementary and secondary levels. He is on the Board of Directors of the National School Development Council and recently served as the organization's president. Dr. Bettencourt coordinates all of NESDEC's executive search, and planning projects.

**DONALD GERRY KENNEDY**  
**143 Chestnut Circle**  
**Lincoln, MA 01773**

**EDUCATION:**

Harvard Graduate School of Education  
Doctor of Education

Stanford University  
Coe Fellow in U.S. History

Wesleyan University  
Master of Arts in Teaching (History)

Colby College  
Bachelor of Arts (American Civilization)

**EXPERIENCE:**

**Team Leader, Planning and Management,** New England  
School Development Council

**Superintendent of Schools,** Maynard Public Schools, MA

**Superintendent of Schools,** Duxbury Public Schools, MA

**Acting Superintendent of Schools,** Weston Public Schools, MA

**Assistant Superintendent; Assistant to Superintendent,**  
Personnel; Program Director (K-12 curriculum), Weston Public  
Schools, MA

**Teacher and Director of Social Studies**  
K-12, Weston Public Schools, MA

**Teacher,** Guilford High School, CT (intern)

**Personnel Officer,** U.S. Air Force

**ASSOCIATED  
EXPERIENCE:**

- MCAS – Massachusetts Assessment Development Committee in  
History/Social Science for Mass. Department of Education
- Board of Directors, Lexington Montessori School
- Adjunct Faculty, UMass – Lowell
- Lecturer, Suffolk University
- Teaching Fellow, Harvard University
- Trainer, City of Boston secondary school teachers
- Author of Social Sciences Study Guide, Atlantic Monthly

**JOHN H. KENNEDY**  
**8 Holliston Street**  
**Medway, MA 02053**

**EDUCATION:**

**Master of Arts**  
Boston College, Boston, MA

**Bachelor of Arts**  
Villanova University, Villanova, PA

**PROFESSIONAL  
EXPERIENCE:**

**Consultant/Staff Associate, Planning and Management**  
New England School Development Council

**Director of Curriculum Assessment and Professional  
Development**  
Millis Public Schools  
Millis, MA

**Social Studies Curriculum Coordinator, Grades K-12**  
Medway Public Schools  
Medway, MA

**Teacher, Social Studies**  
Medway Public Schools  
Medway, MA

**RELATED  
EDUCATIONAL  
EXPERIENCE:**

- Served on the state committee that developed the Massachusetts Social Studies Framework
- Led the NEASC self-study and standards implementation
- Presented at Department of Education seminars on topics such as Improvement Plan Development and Standards-based Curriculum Implementation
- Served as the district liaison to the Department of Education regarding numerous topics

**MARGERY T. CLARK**  
**6 Polliwog Lane**  
**Gorham, ME 04038**

## **EDUCATION**

M.Ed., Lesley University, Cambridge, MA  
B.S., University of Connecticut, Storrs, CT

## **PROFESSIONAL EXPERIENCE**

**Consultant/Staff Associate, Planning and Management**  
New England School Development Council

**Principal**  
Calvin Coolidge Elementary School  
Shrewsbury, MA

**Principal**  
Martha Jones School  
Westwood, MA

**Principal**  
Robinson School, Cameron School, Frost School  
Westford, MA

**Gifted Coordinator & Specialist**  
Westford Public Schools, Westford, MA  
Andover Public Schools, Andover, MA

**Teacher**  
Grades 2-5, New York, Massachusetts and Pennsylvania

**ARTHUR L. BETTENCOURT**  
**148 Union Street**  
**Norfolk, MA 02056**

**EDUCATION:**

**Doctor of Education**

Boston University, Boston, MA  
Educational Leadership

**Master of Education**

Tufts University, Medford, MA

**Bachelor of Arts**

Salem State College, Salem, MA

**PROFESSIONAL  
EXPERIENCE:**

**Executive Director**

New England School Development Council

**Lecturer**

Simmons College, Boston, MA

**Executive Consultant**

New England School Development Council

**Superintendent of Schools**

Medway Public Schools, Medway, MA

**Superintendent of Schools**

Supervisory Union No. 47  
Bolton and Stow, MA

**Principal, Assistant Principal**

Woodman Park School  
Dover Public Schools  
Dover, NH

**Science Department Curriculum Associate (Chair)**

Weeks Junior High School  
Newton Public Schools  
Newton, MA

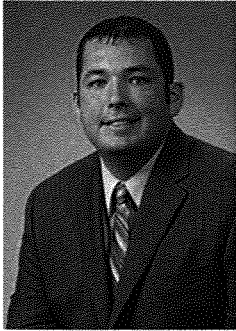
**Science Teacher**

Weeks Junior High School  
Newton Public Schools  
Newton, MA

**Environmental and Site/Civil Engineering**

**Fuss & O'Neill EnviroScience, LLC**





## Kevin J. McCarthy Project Manager

Mr. McCarthy is a Project Manager working out of our Trumbull Fuss & O'Neill EnviroScience LLC division. Throughout his career, he has performed consulting, inspection, and risk assessment services to a wide range of clients including commercial, private, municipal, and residential entities. His work has ranged from small to very large and complex projects that involve inter-disciplinary fields such as asbestos containing materials, lead based paint, radon, PCB containing materials, and a variety of indoor air quality concerns. His principal background is in construction related projects, school systems, and hospitals. He also has an extensive background in OSHA compliance issues, training, audits and related industrial hygiene services.

Mr. McCarthy is the primary project manager on a wide variety of asbestos, lead based paint, PCB, and other hazardous materials projects for Fuss & O'Neill EnviroScience LLC throughout the area and representative projects include:

### Education

BA, Earth Science - 2004  
Southern Connecticut State  
University

MS, Occupational Health - 2008  
University of New Haven

### Licenses & Registrations

Asbestos Consultant - Project  
Monitor CT

Lead Inspector CT

Asbestos Consultant - Inspector CT

Asbestos Consultant - Project  
Designer CT

9 years with Fuss & O'Neill

9 years Professional Experience

**Bridgeport, CT:** Central High School, Project Manager for a pre-renovation hazardous materials inspection and project design for asbestos, lead based paint, and PCBs. Project work included developing a multi-phase project design for asbestos abatement. Additionally, project work included developing, submitting, and obtaining approval from the EPA for a Risk Based Clean-Up and Disposal Plan for PCBs.

**Milford, CT:** Foran High School, Project Manager for a pre-renovation hazardous materials inspection, project design, and construction administration/project monitoring for several phases involving asbestos, lead, and PCB abatement projects. Project work included developing a multi-phased project design for asbestos abatement and lead decontamination. Additionally, project work included developing, submitting, and obtaining approval from the EPA for a Self-Implementing Clean-Up and Disposal Plan for PCBs.

**New Haven, CT:** Housing Authority of City of New Haven, Project Manager for On-Call Environmental Services Contract. Contract work included inspections, project design, and construction administration/project monitoring for small scale asbestos abatement projects at Crawford Manor Apartments, Fairmont Apartments, and Winslow-Celentano Apartments. Contract work also included conducting comprehensive lead inspections, developing lead based paint management and abatement plans, and performing construction administration/project monitoring at sites ranging from a single family residence on Stuyvesant Avenue to a multi-building complex such as Farnham Courts Apartments.

**Ridgefield, CT:** Ridgefield Public Schools, Project Manager for On-Call Environmental Services Contract. Contract work involved pre-renovation asbestos inspections, project designs, and construction



administration/project monitoring for renovation projects at Farmingville Elementary School and Veteran's Park Elementary School. Additionally, contract work included airborne radon inspection, radon mitigation design, and construction administration for the entire school district.

**Stamford, CT:** Connecticut Department of Construction Services, Project Manager for a pre-renovation inspection, project design, and construction administration/project monitoring for the Interior Abatement and Demolition Project at JM Wright Technical High School. Project work included developing a project design for asbestos abatement. Additionally, project work included developing a Performance Based Clean-Up and Disposal Plan for PCBs.

**Landscape Architecture**

**Blades + Goven, LLC**

**Resume:** Earl J. Goven, ASLA  
Principal

**Employment:** Principal / Owner  
Blades + Goven, LLC  
Fairfield, Connecticut  
1996-present

**Education:** 1983 SUNY College of Environmental Science and Forestry  
Bachelor of Landscape Architecture

**Professional Affiliations:** Member: American Society of Landscape Architects  
Member: Connecticut Chapter - ASLA  
Member Green Roofs for Healthy Cities  
Member CT Recreation and Parks Association

**Teaching:** **2004:** Innovative Storm water Management for Small Sites, Southeast New York Storm water Conference and Trade Show Poughkeepsie, NY.  
**2005:** Low Impact Landscapes- Cost Effective Techniques for the Treatment of Storm water, Green Buildings, Landscapes and Communities, Newburgh, NY  
**2010** Guest Lecturer: Sustainable Scarsdale -Low Impact Development Techniques, Scarsdale, NY.

**Active Registration:** 1986 Connecticut  
2000 New York

**Experience:** Mr. Goven has over 25 years of experience in the fields of landscape architecture, site and master planning. He has served as designer, project manager and/or principal-in charge for numerous projects and project types. He has a strong background in low impact development (LID) and site design with extensive regulatory approval experience at the local, state, and federal regulatory level. Mr. Goven is dedicated to the pursuit of sustainable design solutions for all site related activities.

**Projects:**

Maloney High School	Meriden, CT
Victory Gardens Housing	Newington, CT
Amistad High School	New Haven, CT
The Homes at Monterey (Hope VI)	New Haven, CT
Chamberlain Heights Housing	Meriden, CT
My Sisters Place Housing,	Hartford, CT
Longfellow School	Bridgeport, CT
Killingly High School	Killingly CT
Norwalk, High School	Norwalk, CT
Brian McMahon High School	Norwalk, CT



**Vertical Transportation**

**AB Consulting**

## **BHARAT PATEL**

### **President and Principal in Charge of AB Consulting**

#### **Professional Expertise:**

- Manage the project from inception to completion.
- Review and study the project requirements.
- Prepare complete engineering contract documents of drawing and specification.
- Coordinate the project with other trades.
- Design the entire vertical transportation system.
- Supervision and construction management of the project.

#### **Professional Experience:**

##### **AB Consulting; Congers; NY**

**11/02 to Current**

President: Maintain day to day company operation. Project Management - vertical transportation system projects. Provide guidance and support to client in establishing the scope of work and prepare budget estimate. Supervise, design and prepare contract document of engineering drawings and specification. Monitor construction of the project and resolve any issues.

##### **MDM Consulting Engineers; Jersey City; NJ**

**11/94 to 10/02**

Associate and Head of Vertical Transportation Department: Manage the vertical transportation department. Marketing of the engineering services to new and established clients. Manage project in total respect from proposal to final acceptance. Design and prepare contract document of engineering drawings and contract specification. Manage construction of the project and resolve the field problem.

##### **New York City Board of Education; Long Island; NY**

**06/87 to 06/94**

Assistant Supervisor of Mechanical Engineering: Supervised and managed construction of Vertical Transportation project including elevator, escalator, sidewalk elevator, and dumbwaiter and hoisting devices. Responsible to resolve design engineering problem along with architect, structural engineer, electrical engineer, and HVAC engineer.

##### **Westinghouse Elevator Corporation; Morristown; NJ**

**04/81 to 06/87**

Application Engineer: Designed and selected apparatus for elevator and escalator, provided design coordination to architect, structural engineer and other trade engineers. Identify and provided technical solution of the design for vertical system. Developed computer program to calculate reaction and size of the machine beam.

##### **Various Engineering Firms**

**09/79 to 09/74**

Design development, manufacturing process, project engineering, and cost estimate for various

---

system including priming system for centrifugal pump, fastener machine, and material handling system of belt conveyor, material elevator, crusher, feeder, and screener with associated devices.

**Education:**

M. S. in Mechanical Engineering, December 1980.  
New Jersey Institute of Technology, Newark, New Jersey.

B. S. in Mechanical Engineering, June 1974.  
S. P. University, India

**Project Experience:**

1. Project: Morristown Train Station, NJ Transit project.  
  
Client: Urbahn Architects and Daniel Frankfurt, joint venture; through MDM Consulting Engineers.  
  
Project Work: Provided construction support services of reviewing shop drawings in accordance with technical specification, reviewing and analyzing change order with respective code compliance, investigating existing condition to resolve construction issues, and attending meeting in resolving construction issues for two passenger elevators of the project.  
  
Project starting date: June 2003.  
Project completion date: October 2004.
  
  2. Project: 96 Street Train Station Rehabilitation, Manhattan, NY.  
  
Client: Urbahn Architects for NYC Transit Authority.  
  
Project Work: Provide design and construction support services for two new passenger elevators. These elevators will be installed in the existing train station with many constraints and require special design consideration.
  
  3. Project: Union City Magnet School, New Jersey.  
  
Client: Urbahn Architects for NYC Transit Authority.  
  
Project Work: Provide design and construction support services for a new two passenger elevators in the new school.
  
  4. Project: Bayard Rustin Humanities High School, Manhattan, NY.  
  
Client: di Dominico + Partners for New York City School Construction Authority.
-

Project: Provide design and construction support services for rehabilitation of four existing passenger elevators. The existing manual passenger elevators with old relay logic controller device will be replaced with new automatic passenger elevators with automatic door operation and solid state microprocessor controller, cab fixtures etc.

5. Project: Highbridge Postal Station, Bronx, NY.

Client: O'Dea Lynch Abbittista Consulting Engineers for United States Postal Service.

Project Work: Provide design and construction support services for rehabilitation of a freight hydraulic elevator and a new material lift in the existing postal station.

6. Project: TBTA – Project 59; Conversion/Alteration of OMH Recreation Facility.

Client: Team member with Urbahn Architects for MTA Bridges and Tunnels.

Project Work: Provide design and construction support services for vertical transportation system rehabilitation and conversion of OHM facility into TBTA office building.

7. Project: Gouverneur Healthcare Services Modernization – Manhattan, NY.

Client: Dormitory Authority of State of New York, New York.

Architect: Hillier Architecture, New York.

Project work: AB Consulting is a team member with Architect for the project, providing sub-consultant engineering services for Vertical Transportation system. This project has combination of new building and renovation of the existing building. The new building addition of six floors will provide approximate 75,000 square feet area for Ambulatory and Nursing services, Out-patient Clinic services and Parking area. The addition of the facility will be provided with two new passenger elevators.

The existing facility of 13 floors is provided with eight (8) elevators. These existing elevators originally installed over thirty years will be modernized to match the new elevator technology in compliance with current code and safety and security requirements.

Our consulting engineering services include traffic analysis for vertical transportation system in the new building. For rehabilitation of elevators



in the existing facility building, visit jobsite to survey and review existing condition of elevator system, evaluate elevator components, identify and address code requirements to meet safety and security of the elevator system, traffic study to analyze the building transportation need in timely manner, establish scope of work for rehabilitation of eight elevators, Provide services of preparing engineering contract documents of drawings and contract documents, bid services of analyzing, evaluating bid and recommending the contractor for the project. Provide construction support services of reviewing shop drawings, evaluating & approving change order, attending project meeting, construction inspection and preparing report, preparing punch list and reviewing final closing documents.

8. Project: Thomas Edison High School, Queens, NY.  
Client: EI Associates for New York City School Construction Authority.  
Project: Provide design and construction support services for rehabilitation of one existing passenger elevator. The existing elevator was originally installed approximately thirty-five (35) years ago. The elevator was provided some upgrade in 1987. The existing elevator provided with relay-logic type controller device will be replaced with new solid state type microprocessor controller, cab, fixtures, hoist machine, landing device, limit switches, hoist & governor wire rope, cab operator, and associated security and safety requirements.
9. Project: Fulton Street Transit Center, Manhattan, NY.  
Client: Arup Engineers for NYC Transit Authority.  
Project Work: Provide design, consulting and engineering services for Vertical Transportation system of new Transit Center development and connecting five busy sub lines with Transit Center to create major hub for transfer. The project is estimated to provide with seventeen (17) passenger elevators and twelve (12) escalators. All Vertical Transportation system devices require to be installed in constrained space, limited overhead room and with various structural and utility design limitations requiring special design requirements and watchful coordination with all trades.

**Security, Technology and Telecommunications**

**D'Agostino & Associates, LLC**

# D'AGOSTINO & ASSOCIATES

*Technology Design & Support Services*

## PROFESSIONAL RESUME

Marc J D'Agostino  
CEO, Sr Technology Designer

### Experience:

Marc D'Agostino is a management and design specialist with 30 years of technology design, engineering and project management experience. An expert in evaluating existing technological systems and transitioning older technologies into a current, more scalable and reliable solutions that will improve efficiency and cost. Consistently evolving with the newest technology mandates, codes, standards and trends to accurately define and satisfy a project's requirements and needs. Capable of completing designs to meet all time schedules while keeping systems within the project's budgetary estimates. Construction management & communication skills to coordinate with all construction and design teams to verify a system's successful implementation.

### Value Offered:

- Technology Evaluation
- Network Infrastructure Design (Ethernet and WiFi)
- Technologies over internet protocol; Voice & Video over IP (VoIP)
- Security System Design (Intrusion detection, access controls & video surveillance)
- Audio Visual Design (Classroom technology, digital display technology)
- Data Center Design
- IT strategic Planning
- Estimating
- Documentation
- Service Provider Negotiations & Management
- Contract Negotiations
- Owner Relations
- Contractor Relations
- Construction Management

### Certification & Training:

- Working comprehension of the ANSI/TIA/EIA, ISO/IEC, BICSI and the IEEE standards.
- Working knowledge of the NEC, NFPA & NECS codes that apply to low voltage systems; including the data and telecommunication, security and A/V industries.
- Working comprehension of computer aided design.
- Past and ongoing accredited training and affiliations ensure that all technology designs conform to the current industries standards.
- BICSI member with accumulating credits

### Professional Experience:

The scope of Marc's experience includes full management for the direction of design, engineering, implementation, support, and training for all technology systems outlined above.

Marc has spearheaded numerous projects commanding time-critical and new technologies, including projects requiring transition from outdated technologies to highly functional, efficient and cost effective client-server technology solutions which have dramatically improved efficiency and optimized data integrity.

---

**D'AGOSTINO & ASSOCIATES**

*Technology Design & Support Services*

**Cost Estimating**

**Leach Consulting Company, LLC**

**Kevin T. Leach, P.E.**

---

**Professional Experience:**

2002 – Present	<b>Leach Consulting Company, LLC</b> , Farmington, CT Principal
2003 – 2005	<b>The Pike Company, Inc.</b> , Kensington, CT (Leach Building merged into Pike) Vice President
1978 – 2003	<b>Leach Building Co., Inc.</b> , Kensington, CT President (\$1.3 Billion in Construction In-place)
1971 – 1978	<b>Farmington Industrial Park (FIP Corporation)</b> , Farmington, CT Vice President-Design & Construction
1971 – 1968	<b>George B. H. Macomber Co.</b> , New Haven, CT Project Manager
1963 – 1968	<b>George A. Fuller Co.</b> , New York, New York Project Engineer, Superintendent

Kevin brings with him many years in the construction industry specializing in University, Institutional, and Educational, Corporate, Commercial and Health-Care markets. He works with clients in, both, the public and private sectors and is consistently able to adjust the level of services he offers to accommodate the individual needs.

Kevin has specific expertise in the Master plan and Pre-Construction Phase Development, integrating Design and Budget control to maximize the clients' program without sacrificing program or aesthetics.

Kevin Leach, a Professional Engineer since 1977, has a Bachelor of Science Degree in Civil Engineering from Lehigh University and completed his Graduate Studies at Hartford Graduate Center. Kevin's professional affiliations include the Associated General Contractors of America, the American Society of Professional Engineers, the Connecticut Society of Professional Engineers, as well as, a Member of the University of Hartford's Masters Architectural Program Advisory Board.

During Kevin's career in the industry spans a variety of projects such as Mellon Art Gallery & Auditorium and Rosemary Hall Campus, Choate-Rosemary School, British Art Gallery, Yale Law School & Auditorium, Beinecke Rare Book & Manuscript Library, Yale University, Gymnasium Addition, The Children's' Center New Haven (Hamden), CT, Connecticut Historical Society Museum Renovations, Hartford, CT.

**Education:**

**Lehigh University**, Bachelor of Science – Civil Engineering  
**Hartford Graduate Center**. Completed Graduate Studies



## I. Data



The goal of a needs assessment is to evaluate the current condition and capacity of a facility (or multiple facilities). The assessment evaluates tenant requirements, including functionality, security, building condition, and other factors through the use of performance measure tailored to each project. The assessment identifies current and future space needs and compares those needs to the capacity of the existing facility. Projects are identified to improve or renovate the existing facility or, if a facility has reached capacity, new construction or leasing could be identified to meet future space needs. FT has performed over 30 educational and municipal needs assessments over the last ten years for many clients throughout Connecticut. For your review, we have included portions of a sample report that we conducted for Tolland Public Schools.

NESDEC has been helping school districts plan for future school facility needs for over forty years. During the course of an educational space needs planning project, they work with educational and community staff to clearly define both the educational programs currently being offered as well as those programs which the district wishes to offer. The available educational spaces are then analyzed in terms of their size, number, and appropriateness to offer the educational program as defined. NESDEC has a proven record of success in effectively analyzing and presenting enrollment projections and assumptions. Portions of a recent demography report completed by NESDEC is included in this section.

**TOLLAND PUBLIC SCHOOLS  
EVALUATION CHECK-LIST**

SCHOOL: *Tolland High School - Tolland, CT.*

CONDITION OVERALL SCALE 1 TO 4

PRIORITY 1: Immediate - is in need of immediate repair/replacement due to health or safety concerns, significant deterioration, or code violation.

PRIORITY 2: Urgent- item is in poor condition causing damage to portions of facility-should be repaired/replaced within 1-3 years

PRIORITY 3: Important - exhibits some system or finish deficiency -failure can be expected in 5-7 year period

PRIORITY 4: Long Term Improvement-condition or deficiency can be deferred

Building Exterior	CONDITION	REMARKS
Masonry	3	Exterior brick masonry, limestone facing, slate panels & rubbed concrete, re-pointing & acid wash cleaning may be required in some areas
Wood Trim / Siding	NA	
Wall Panels	3	Painted steel fascia plate above windows, w/ lead coated copper gravel stop & coping
Soffits/Overhangs	3	Painted gypsum board soffits above windows
Windows	3	Insulating glass in painted metal frames, operable casement & projected hopper type windows, some fixed sash
Entrances	1	Steps leading to raised terrace, not handicap accessible, ramp required, flush curb or curb cut required
Roofs	1	Original roofing 18 to 35 years old, need roof replacement, Gymnasium re-roofed in 1986, need to verify materials used
<b>Building Exterior Conclusions</b>		
Appearance	3	Exterior fair to good condition, re-pointing and acid washing cleaning may be required in some areas
Security	NA	
Water/Air Infiltration	3	No leaks apparent, no access to roof to verify. Air conditioning in 1982 addition only.
Accessibility	1	No handicap accessibility to main entrance front door, ramp may be required
Energy Efficiency	NA	
Rescue and Ventilation		Insulating glass in painted metal frames, operable casement & projected hopper type windows, some fixed sash
PA / Technology Plan	4	Building is wired for cable TV, Tech wiring in place and networked
<b>Exit Features</b>		
Stairs	3	Stairwells have been updated, some code issues still exist
Doors	2	Hardware upgrades required, wire glass sizes & door side clearances, louvers & grilles not code compliant, undercuts, signage
Corridors	2	Verification that walls extend full height & prevent the passage of smoke & sealed penetrations
Accessibility	2	No passenger unloading zone w/ flush curbs, ramp required at main entrance, handrails at exterior steps, lift required in exercise gym



**TOLLAND PUBLIC SCHOOLS  
EVALUATION CHECK-LIST**

SCHOOL: *Tolland High School - Tolland, CT.*

CONDITION OVERALL SCALE 1 TO 4

PRIORITY 1: Immediate - Is in need of immediate repair/replacement due to health or safety concerns, significant deterioration, or code violation.

PRIORITY 2: Urgent- Item is in poor condition causing damage to portions of facility-should be repaired/replaced within 1-3 years

PRIORITY 3: Important - exhibits some system or finish deficiency -failure can be expected in 5-7 year period

PRIORITY 4: Long Term Improvement-condition or deficiency can be deferred

Interior Elements	Finishes	Light	Vent	ADA	Built-In Equip.	Remarks
Classrooms	3	NA	NA	1	3	Asphalt tile & vinyl asbestos tile flr, glazed block base, exposed brick & ptd blk walls, lay-in acoustical tile ceiling.
Commercial Kitchen	3	NA	NA	2	3	Quarry tile flr, glazed block base, glazed block walls, vinyl faced acoustical tile c/g
Gymnasium	1	NA	NA	1	2	Hardwood flooring, steel angle base, tinted ground-face block, perforated transite panels, exposed construction pld
Cafeteria	3	NA	NA	3	NA	Vinyl asbestos tile flr, glazed block base, exposed brick & ptd block walls, folding accordion partition between kitchen.
Library	3	NA	NA	3	NA	Vinyl asbestos tile flr, glazed block base, exposed brick & ptd block walls, lay-in acoustical tile c/g, vinyl tackboards
Administrative Offices	3	NA	NA	3	3	Vinyl asbestos tile flr, glazed block base, ptd block walls, (1) hr lay-in acoustical tile c/g
Teacher's Lounge / Dining	3	NA	NA	3	NA	Vinyl asbestos tile flr, glazed block base, exposed brick & ptd blk walls, lay-in acoustical tile c/g
Corridors	3	NA	NA	2	3	Vinyl asbestos tile flr, glazed block base, glazed block walls, metal lockers, vinyl covered tackboard, (1) hr rated lay-in acoustical tile ceiling.
Toilet Rooms	2	NA	NA	1	1	Ceramic tile floor, glazed block base, glazed block walls, (1) hr rated vinyl faced acoustical tile c/g
Locker / Shower / Drying Rooms	2	NA	NA	1	1	Ceramic tile floor, glazed block base & ptd concrete base, glazed block walls, plaster ceiling, metal acoustical c/g
Stairs	3	NA	NA	2	NA	Vinyl asbestos tile flr & slate flr, glazed block base, glazed block walls, (1) hour rated acoustical tile & plaster
Storage Rooms	4	NA	NA	4	NA	Asphalt tile flr, glazed block base, ptd block walls, lay-in acoustical tile
Crafts & Graphics Classroom	3	NA	NA	3	3	Vinyl asbestos tile flr, glazed block base, ptd block walls, lay-in acoustical tile c/g
Biology Classroom	3	NA	NA	3	3	Vinyl asbestos tile flr, glazed block base, ptd block walls, lay-in acoustical tile c/g
Science Classroom	3	NA	NA	3	3	Vinyl asbestos tile flr, glazed block base, ptd block walls, lay-in acoustical tile c/g
Earth Science Classroom	3	NA	NA	3	3	Vinyl asbestos tile flr, glazed block base, ptd block walls, lay-in acoustical tile c/g
Chemistry Classroom	3	NA	NA	3	3	Vinyl asbestos tile flr, glazed block base, ptd block walls, lay-in acoustical tile c/g
Wood Working Shop	3	NA	NA	3	3	Color hardened concrete flr, glazed block base, ptd block walls, exposed construction
Lecture Hall	3	NA	NA	3	3	Vinyl asbestos tile flr, glazed blk & ptd blk base, ptd block & gyp bd walls, 12x12 acoustical tile c/g

**TOLLAND SCHOOLS**  
SPACE NEEDS ASSESSMENT

June 8, 2000  
DRAFT

**CLASSROOM NEEDS**

GRADE	1999-00	2000-01	2001-02	2002-03	2003-04	2004-05	2005-06	2006-07	2007-08	2008-09	2009-10	AVG.	Comments
<b>BIRCH GROVE</b>													
PK	30	30	30	30	30	30	30	30	30	30	30		
K	211	240	230	237	241	238	229	236	234	233	234		
1	208	226	257	246	254	258	255	245	253	250	249		
	449	496	517	513	525	526	514	511	517	513	513		
Pre-K (1)/18 X.5	1	1	1	1	1	1	1	1	1	1	1		
Kindergarten (6)/18 X.5	6	7	6	7	7	7	6	7	7	6	7		Contract = 16< kids/class
First Grade (10)/20	10	11	13	12	13	13	13	12	13	13	12		
First Grade (10)/22	9	10	12	11	12	12	12	11	12	11	11		
<b>Total Classrooms (K-1)/20</b>	<b>16</b>	<b>18</b>	<b>19</b>	<b>19</b>	<b>19</b>	<b>20</b>	<b>19</b>	<b>19</b>	<b>19</b>	<b>19</b>	<b>19</b>		
<b>Total Classrooms (K-1)/22</b>	<b>15</b>	<b>17</b>	<b>18</b>	<b>18</b>	<b>18</b>	<b>18</b>	<b>18</b>	<b>18</b>	<b>18</b>	<b>18</b>	<b>18</b>		
<b>Existing Classrooms</b>	<b>16</b>	<b>16</b>	<b>16</b>	<b>16</b>	<b>16</b>	<b>16</b>	<b>16</b>	<b>16</b>	<b>16</b>	<b>16</b>	<b>16</b>		
Difference	0	-2	-3	-3	-3	-4	-3	-3	-3	-3	-3		With Kindergarten @ 16< kids
Difference	1	-1	-2	-2	-2	-2	-2	-2	-2	-2	-2		
<b>PARKER</b>													
2	215	214	233	265	253	262	266	263	252	261	258		
3	189	221	220	240	273	261	270	274	271	260	269		
4	191	195	228	227	247	281	269	278	282	279	268		
	595	630	681	732	773	804	805	815	805	800	795		
Second Grade (7)/22	10	10	11	12	12	12	12	12	11	12	12		
Third Grade (7)/22	9	10	10	11	12	12	12	12	12	12	12		
Fourth Grade (7)/22	9	9	10	10	11	13	12	13	13	13	12		
<b>Total Classrooms (2-4)</b>	<b>27</b>	<b>29</b>	<b>31</b>	<b>33</b>	<b>35</b>	<b>37</b>	<b>37</b>	<b>37</b>	<b>37</b>	<b>36</b>	<b>36</b>		
<b>Existing Classrooms</b>	<b>33</b>	<b>33</b>	<b>33</b>	<b>33</b>	<b>33</b>	<b>33</b>	<b>33</b>	<b>33</b>	<b>33</b>	<b>33</b>	<b>33</b>		
Difference	6	4	2	0	-2	-4	-4	-4	-4	-3	-3		
<b>TOLLAND MIDDLE</b>													
5	233	194	198	231	230	251	285	273	282	286	283		
6	211	238	198	202	236	235	256	291	278	288	292		
7	198	211	238	198	202	236	235	256	291	278	288		
8	212	202	215	243	202	206	241	240	261	297	284		
	854	845	849	874	870	928	1,011	1,060	1,112	1,149	1,147		
Fifth Grade (7)/22	11	9	9	11	10	11	13	12	13	13	13		
Sixth Grade (7)/22	10	11	9	9	11	11	12	13	13	13	13		
Seventh Grade (7)/22	9	10	11	9	9	11	11	12	13	13	13		
Eighth Grade (7)/22	10	9	10	11	9	9	11	11	12	14	13		
<b>Total Classrooms (5-8)</b>	<b>39</b>	<b>38</b>	<b>39</b>	<b>40</b>	<b>40</b>	<b>42</b>	<b>46</b>	<b>48</b>	<b>51</b>	<b>52</b>	<b>52</b>		
<b>Existing Classrooms</b>	<b>40</b>	<b>40</b>	<b>40</b>	<b>40</b>	<b>40</b>	<b>40</b>	<b>40</b>	<b>40</b>	<b>40</b>	<b>40</b>	<b>40</b>		
Difference	1	2	1	0	0	-2	-6	-8	-11	-12	-12		
<b>TOLLAND HIGH</b>													
9	197	220	210	224	253	210	214	251	250	271	309		
10	185	191	213	204	217	245	204	208	243	243	263		
11	138	174	180	200	192	204	230	192	196	228	228		
12	189	137	172	178	198	190	202	228	190	194	226		
	609	722	775	806	860	869	850	879	879	936	1,026		
Ninth Grade (7)/22	9	10	10	10	12	10	10	11	11	12	14		
Tenth Grade (7)/22	8	9	10	9	10	11	9	9	11	11	12		
Eleventh Grade (7)/22	6	8	8	9	9	9	10	9	9	10	10		
Twelfth Grade (7)/22	9	6	8	8	9	9	9	10	9	9	10		
<b>Total Classrooms (9-12)</b>	<b>32</b>	<b>33</b>	<b>35</b>	<b>37</b>	<b>39</b>	<b>39</b>	<b>39</b>	<b>40</b>	<b>40</b>	<b>43</b>	<b>47</b>		
<b>Existing Classrooms</b>	<b>29</b>	<b>29</b>	<b>29</b>	<b>29</b>	<b>29</b>	<b>29</b>	<b>29</b>	<b>29</b>	<b>29</b>	<b>29</b>	<b>29</b>		
Difference	-3	-4	-6	-8	-10	-10	-10	-11	-11	-14	-18		
<b>TOTAL EXIST. CLRM</b>	<b>118</b>	<b>118</b>	<b>118</b>	<b>118</b>	<b>118</b>	<b>118</b>	<b>118</b>	<b>118</b>	<b>118</b>	<b>118</b>	<b>118</b>		
<b>TOTAL NEEDED CLRM</b>	<b>114</b>	<b>116</b>	<b>124</b>	<b>129</b>	<b>133</b>	<b>137</b>	<b>141</b>	<b>144</b>	<b>146</b>	<b>150</b>	<b>154</b>		
<b>TOTAL NEEDED CLRM</b>	<b>113</b>	<b>117</b>	<b>123</b>	<b>127</b>	<b>132</b>	<b>136</b>	<b>139</b>	<b>143</b>	<b>145</b>	<b>149</b>	<b>153</b>		No. clrms W/20 kids per clrm Kin
<b>TOTAL CLRM SHORTFALL</b>	<b>4</b>	<b>0</b>	<b>-6</b>	<b>-11</b>	<b>-15</b>	<b>-19</b>	<b>-23</b>	<b>-26</b>	<b>-28</b>	<b>-31</b>	<b>-36</b>		
<b>TOTAL CLRM SHORTFALL</b>	<b>5</b>	<b>1</b>	<b>-3</b>	<b>-8</b>	<b>-14</b>	<b>-18</b>	<b>-21</b>	<b>-25</b>	<b>-27</b>	<b>-31</b>	<b>-35</b>		



*New England School Development Council*

**EXCERPT FROM**  
**DEMOGRAPHIC STUDY AND**  
**LONG-RANGE SCHOOL FACILITIES PLAN**  
  
**SIMSBURY, CONNECTICUT**

**JUNE 2012**

**New England School Development Council**  
**28 Lord Road**  
**Marlborough, MA 01752**  
**508-481-9444**  
**508-481-5655 fax**  
**www.nesdec.org**  
**nesdec@nesdec.org**

**TABLE 2  
PERCENTAGE OF POPULATION UNDER THE AGE OF 18  
AND MEDIAN AGE**

**STATE OF CONNECTICUT:**

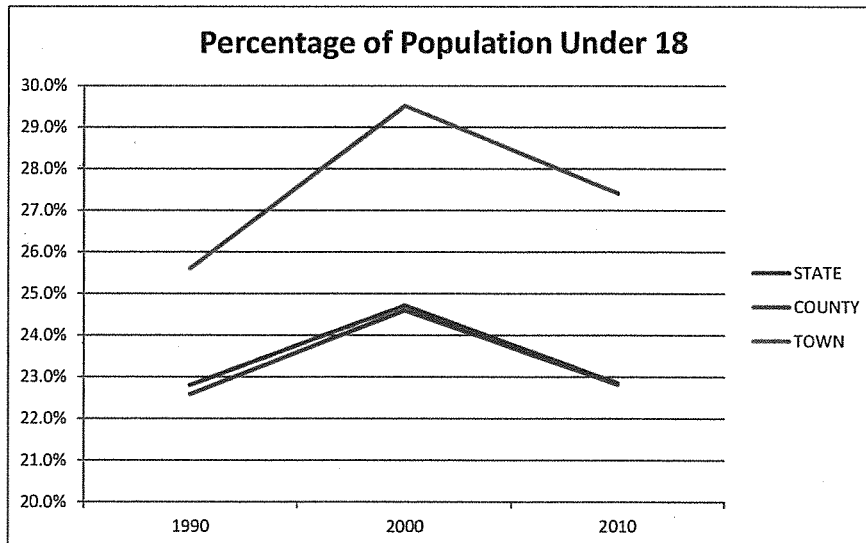
	NO. UNDER 18	% UNDER 18	MEDIAN AGE
1990	749,581	22.8%	34.4
2000	841,688	24.7%	37.4
2010	817,015	22.9%	40.0

**HARTFORD COUNTY:**

	NO. UNDER 18	% UNDER 18	MEDIAN AGE
1990	192,343	22.6%	34.5
2000	210,832	24.6%	37.7
2010	204,043	22.8%	38.9

**TOWN OF SIMSBURY:**

	NO. UNDER 18	% UNDER 18	MEDIAN AGE
1990	5,637	25.6%	37.1
2000	6,858	29.5%	39.6
2010	6,445	27.4%	43.5



**TABLE 4  
PERCENTAGE OF K-12 ENROLLMENT IN POPULATION**

**STATE OF CONNECTICUT:**

	POPULATION	PUBLIC K-12 ENROLLMENT*	% K-12 ENR. IN POPULATION
1990	3,287,116	456,727	13.9%
2000	3,405,065	551,736	16.2%
2010	3,574,097	556,184	15.6%

\* Connecticut Department of Education

**TOWN OF SIMSBURY:**

	POPULATION	PUBLIC K-12 ENROLLMENT	% K-12 ENR. IN POPULATION
1990	22,023	3,902	17.7%
2000	23,234	4,938	21.3%
2010	23,511	4,649	19.8%

**PERCENTAGE K-12 ENROLLMENT IN  
SIMSBURY POPULATION**

